

1300

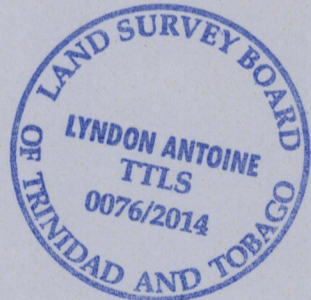
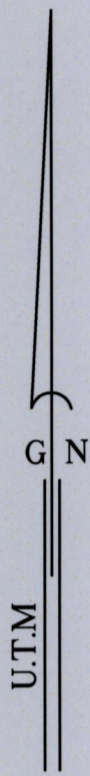
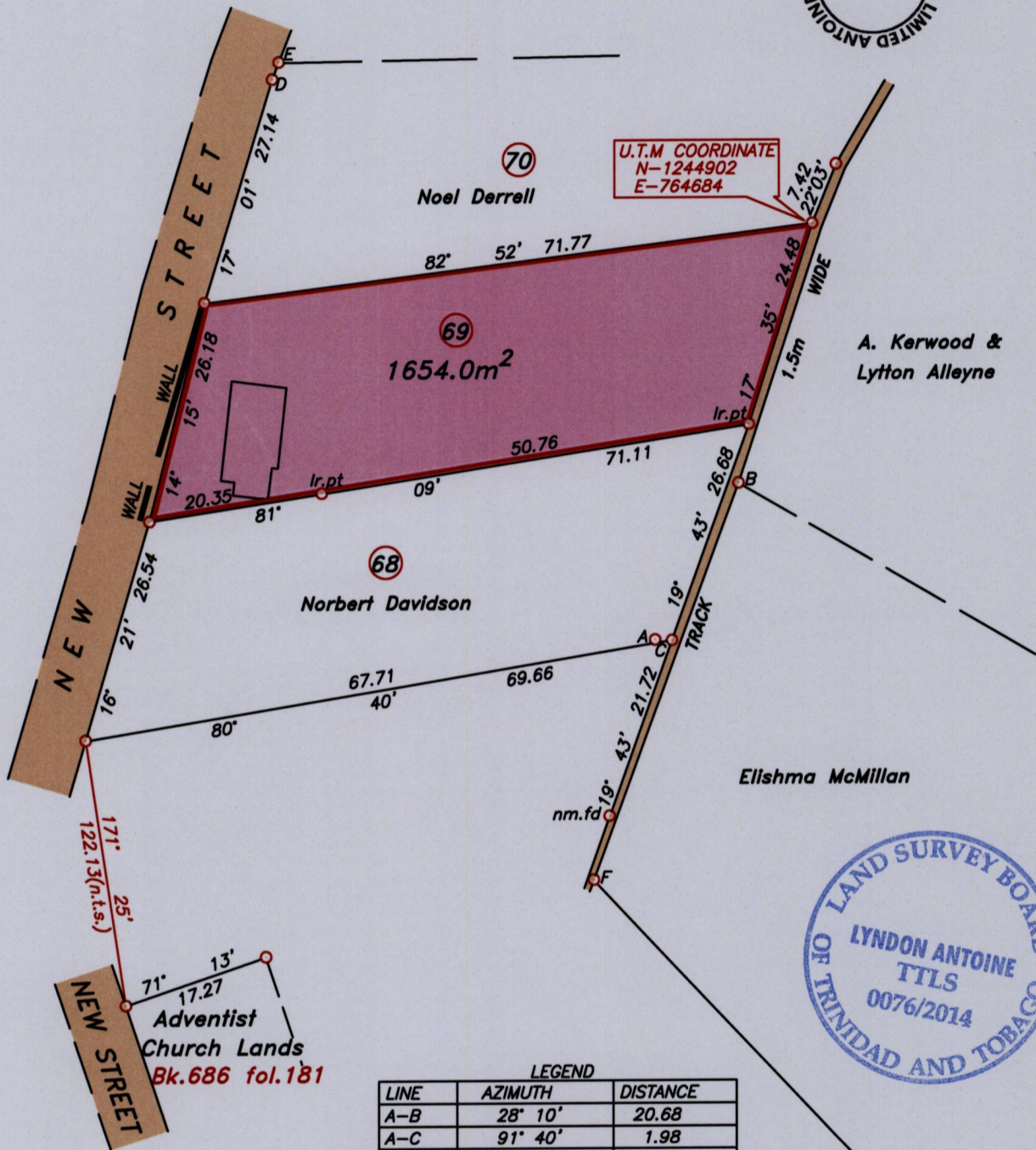
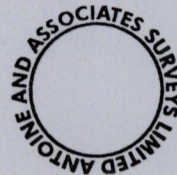
100/192

192

U.P.R.N.....  
To be brought under the provisions  
of the REAL PROPERTY ORDINANCE

Cadastral Sheet I.15.E. <sup>3G</sup>/<sub>2/b/2</sub>  
Ward of Tobago  
Parish of St. Paul  
ROXBOROUGH

Vide AG.55



LEGEND

LINE	AZIMUTH	DISTANCE
A-B	28° 10'	20.68
A-C	91° 40'	1.98
D-E	21° 03'	2.13
F-B	20° 11'	49.16
F-nm.fd	14° 02'	7.64

Approved

*[Signature]*  
Director of Surveys *25/3/15*

Note- UTM Zone 20 (WGS 84) Coordinates obtained from hand held GPS receiver  
± 5.00m

○ Denotes iron found, except otherwise stated.

SCALE 1:750

Bearings are U.T.M grid based on solar observations

Distances are in metres

PLAN of a parcel of land coloured pink in the Ward of Tobago  
Containing one thousand six hundred and fifty four point zero square metres.  
Surveyed by me, with due authority on 28th March 2007 for Annette Pope.  
Certified Correct in accordance with Regulation 25 (1) of the Land Surveyors Regulations 1998.

Checked by *12-18/03/15*  
Entered on.....

*[Signature]*  
*17th November*

Trinidad & Tobago Land Surveyor.....2014.

Path: \\Aasl-server\07survey\P110\YPOPE.DWG