

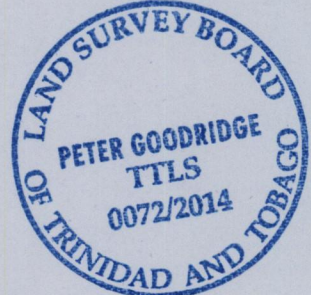
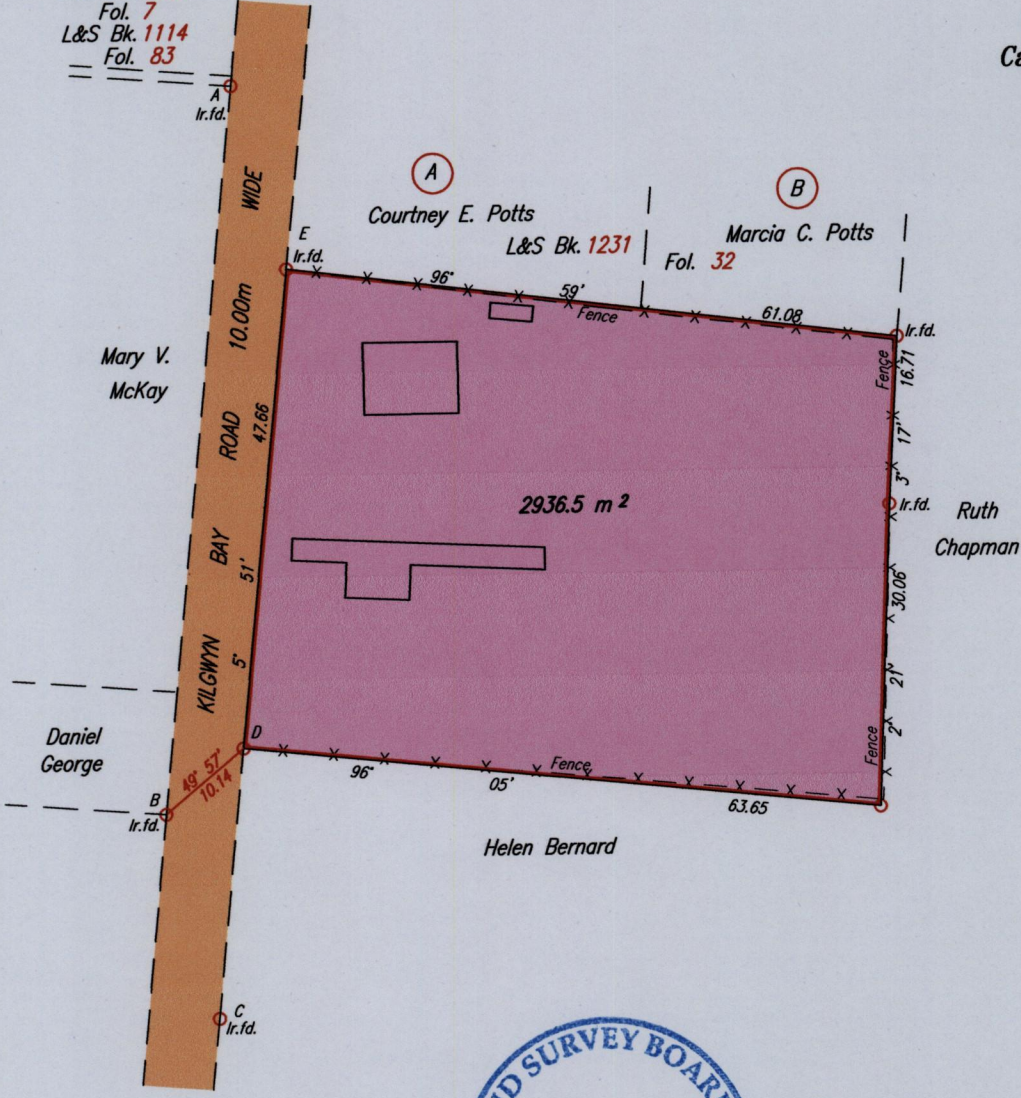
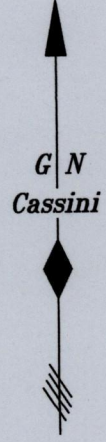
13000

1300/191 191

To be brought under the provisions of the Real Property Ordinance

BON ACCORD

Catherine Phillip
now
Joseph Alexander &
Eleanora Alexander
C.T. Vol. 2665
Fol. 7
L&S Bk. 1114
Fol. 83



LEGEND

From	To	Bearing	Distance
A	- E	163° 43'	19.11
A	- B	185° 44'	72.64
D	- C	185° 50'	26.95

Coordinates of B (I.r.f.): 737998mE, 1234022mN
U.T.M. 20 WGS 84 (+/- 4.00m)
G.P.S. Direct Observation

Approved
Director of Surveys 9/2/15

SCALE 1 : 750
Distances are in METRES

- Denotes Iron put except where otherwise stated
- Bearings are Cassini Grid based on Solar Observations

PLAN of a Parcel of land coloured pink in the Ward of Tobago
Containing two thousand nine hundred and thirty six point five square metres
Surveyed by me, with due authority, on the 13th November 2011 for Catherine Trim
Certified Correct in accordance with Regulation 25 (1) of The Land Surveyors' Regulations 1998,

Checked by
Entered on

Trinidad & Tobago Land Surveyor
C:\LESS 2012\TRIM, CATHERINE, BON ACCORD, NOV. 2011, PERI & SUB.dwg
15th July 2014
FILE NO: TT075