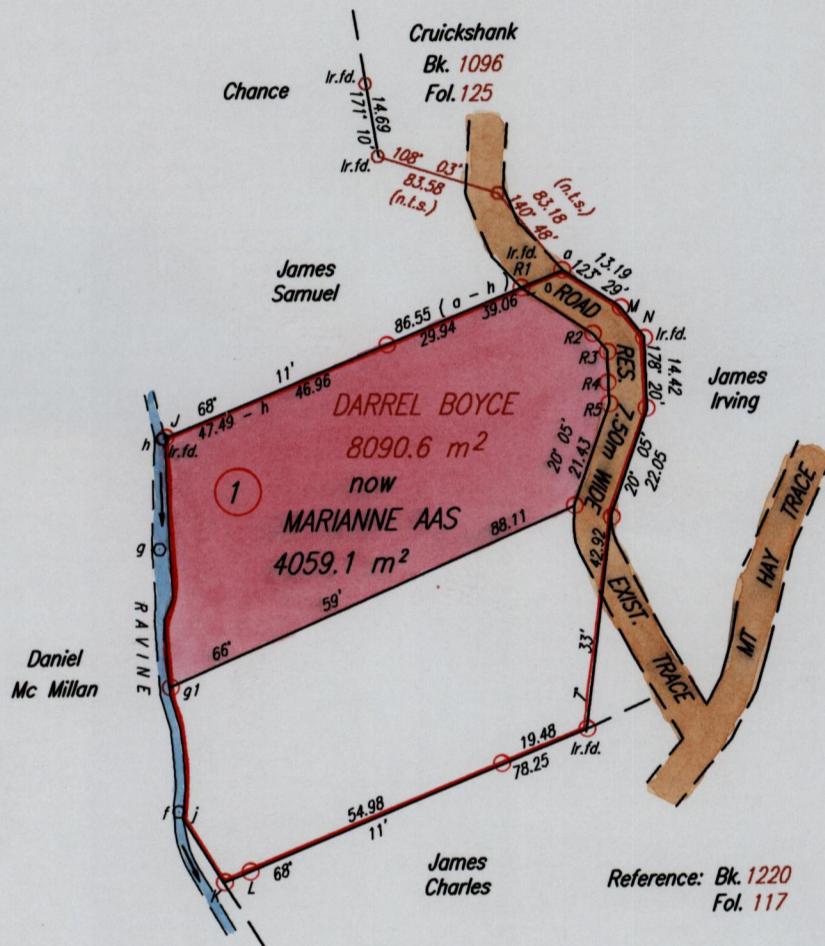
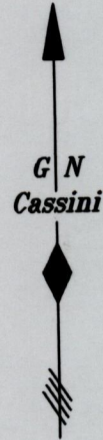


Vol. 4523 Fol 53
C.T. Vol. 4034 Fol. 513

Cadastral Sheet I.16.H. 1C
Ward of Tobago
Parish of St. Patrick

1300 534
1279/93



LEGEND

K - L	68° 11'	3.79
K - j	328° 26'	15.04
j - f	328° 26'	1.50
f - a	356° 43'	52.30
a - h	2° 07'	21.93
g1 - g	356° 43'	27.40
M - N	142° 03'	8.10
a - R1	248° 11'	9.12
R1 - R2	123° 29'	17.16
R2 - R3	142° 03'	4.42
R3 - R4	178° 20'	7.20
R4 - R5	178° 20'	3.32



Approved *[Signature]*
Director of Surveys
2003/11/10

SCALE 1:1500

Distances are in METRES

○ Denotes Iron put except where otherwise stated

Bearings are Cassini Grid based on Solar Observations

PLAN of a Parcel of land coloured pink in the Ward of Tobago
Containing four thousand and fifty nine point one square metres
Surveyed by me, with due authority, in March 2002

In accordance with Regulation 25 (1) of The Land Surveyors' Regulations 1998,

I certify that this plan is correct

Checked by *[Signature]* 29/10/03. *[Signature]* TTLS

Entered on Trinidad & Tobago Land Surveyor *[Signature]* 20th September 2003
C:\LESS 2002\TOBAGO\MARIANNE AAS