

13000

1300/182

182

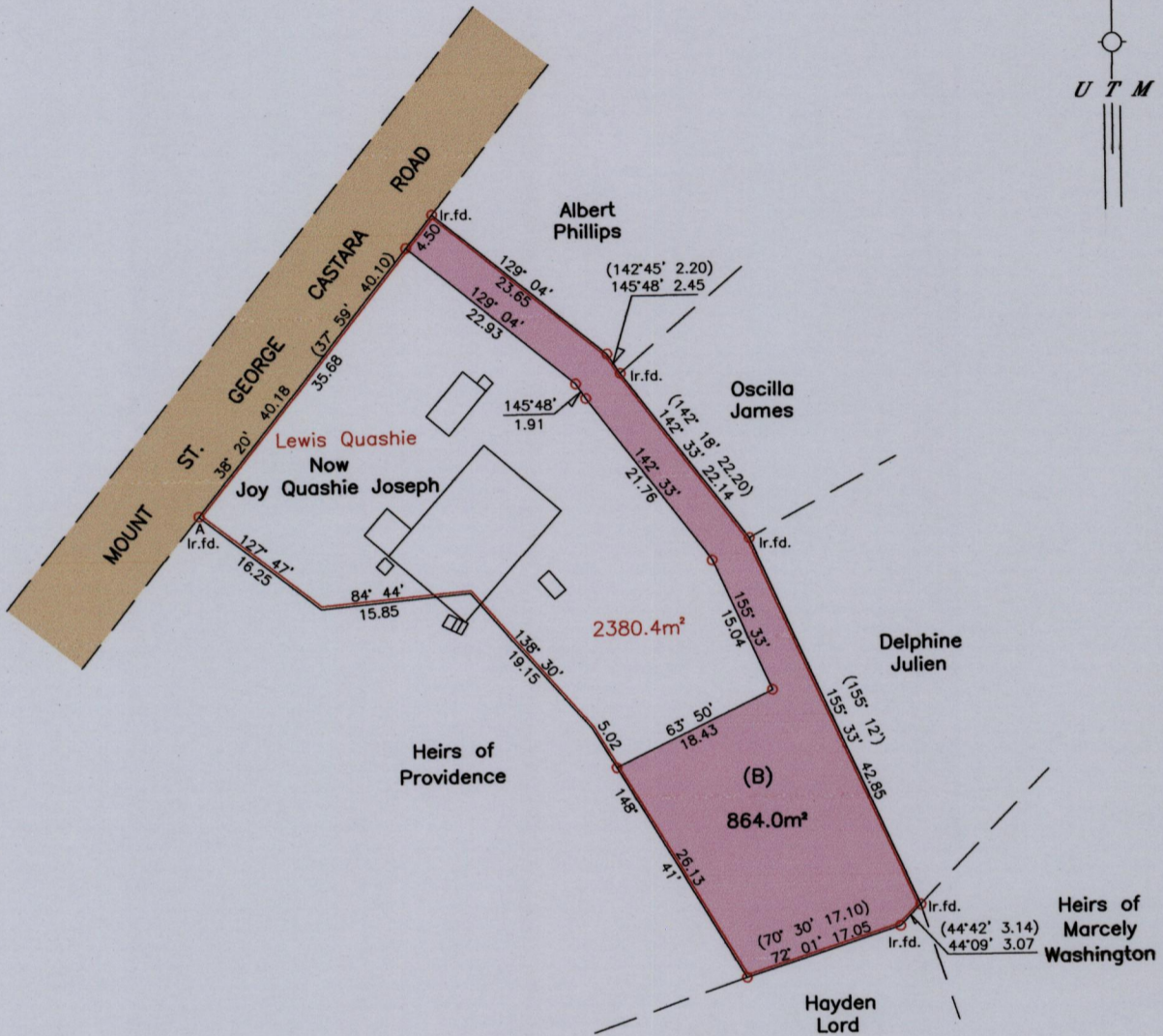
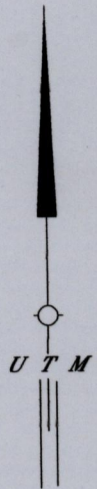
CT Vol.: 4338 Folio: 403

Cadastral Sheet I.18.G

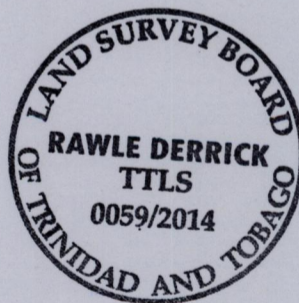
Ward of Tobago

Parish of St. George

MT ST. GEORGE



Ir.f.d. A:—N:1238503m
E:753808m
UTM 20, NAP Datum ±7m
GPS (Hand Held)



Approved.....
Director of Surveys 18/12/14

SCALE 1/750

Distances are in Metres

○ Denotes Iron put except otherwise stated
Bearings are UTM Grid based on Solar Observations
Plan of a Parcel of land coloured pink in the Ward of Tobago
Containing eight six four point zero square metres
Surveyed by me with due authority, on 2nd April 2014
Certified Correct in accordance with Regulation 25 (1) of the
Land Surveyors Regulations 1998.

Checked by.....
Entered..... Trinidad & Tobago Land Surveyor December 02 2014