

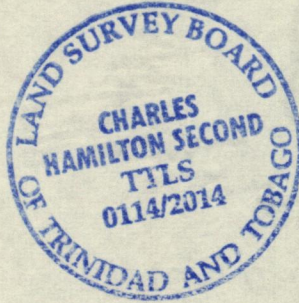
13000

1300/179

179

R.P.O. Vol. 739 Fol. 243

C. T. Vol. 2137 Fol. 147



Cadastral Sheet I.19.E. 4/a/1^{2J}

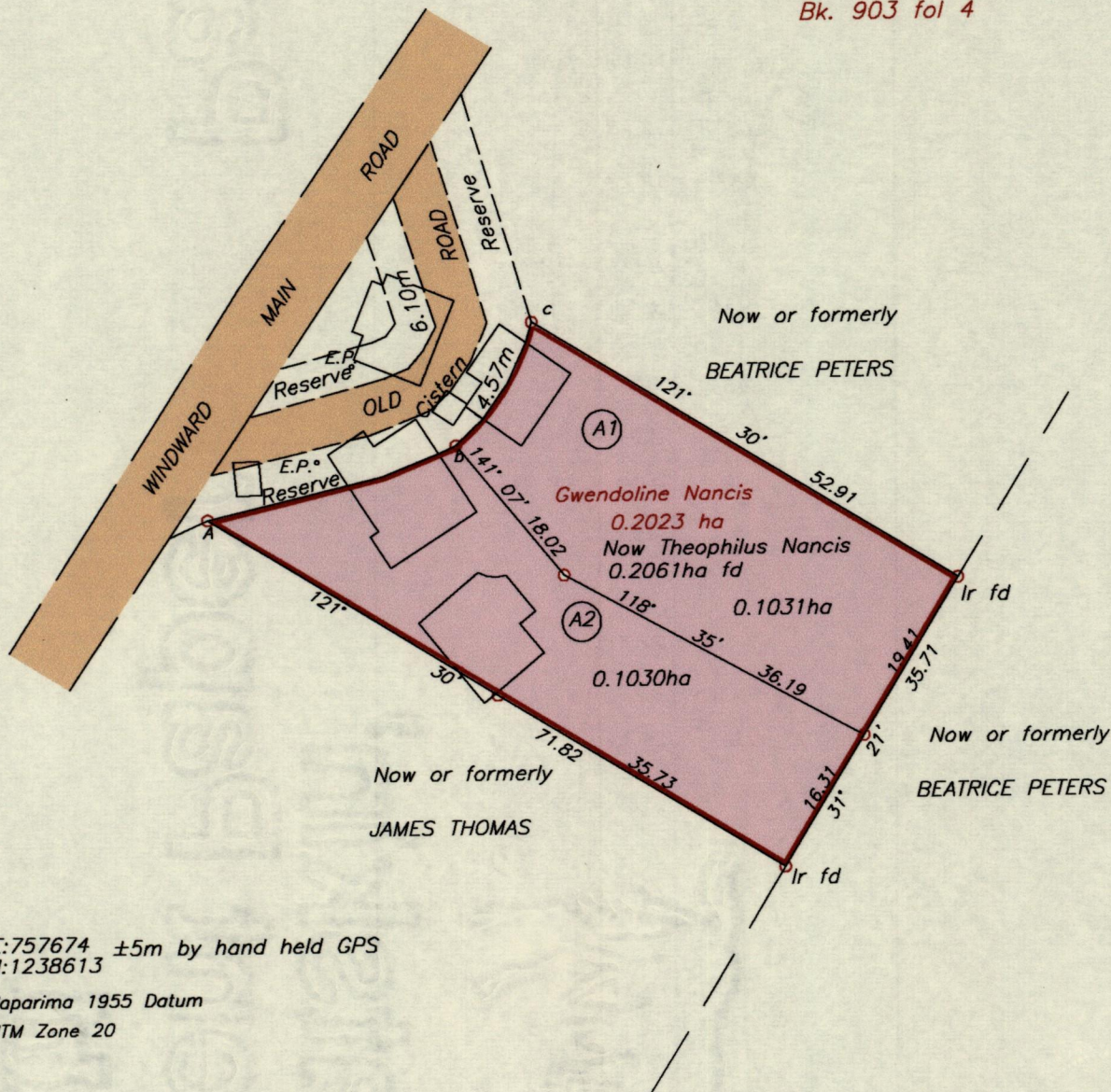
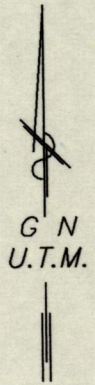
Ward of Tobago

Parish of St. Mary

Goodwood

References

- S.O. 271/31
- Bk. 694 fol 20
- Bk. 764 fol 96
- Bk. 903 fol 4



A = E:757674 ±5m by hand held GPS
 N:1238613
 Naparima 1955 Datum
 UTM Zone 20

Approved *[Signature]*
 Director of Surveys
 30/11/14

See back of plan for notes

SCALE 1:750

Distances are in METRES

- To obtain Cassini Bearings add 27 Minutes
- Denotes Iron put unless otherwise stated
- Bearings are U.T.M. Grid based on solar observations.

PLAN of two Parcels of land coloured pink in the Ward of Tobago
 Containing together zero point two zero six one hectare
 Surveyed by me, with due authority, in October 2011
 Certified correct in accordance with Regulation 25 (1) of the Land Surveyors'
 Regulations 1998,

Checked by *mm* 3/11/2014

Charles H. Second T.T.L.S.

Entered on

Trinidad & Tobago
Land Surveyor

27th March 2014

ROAD NOTES

