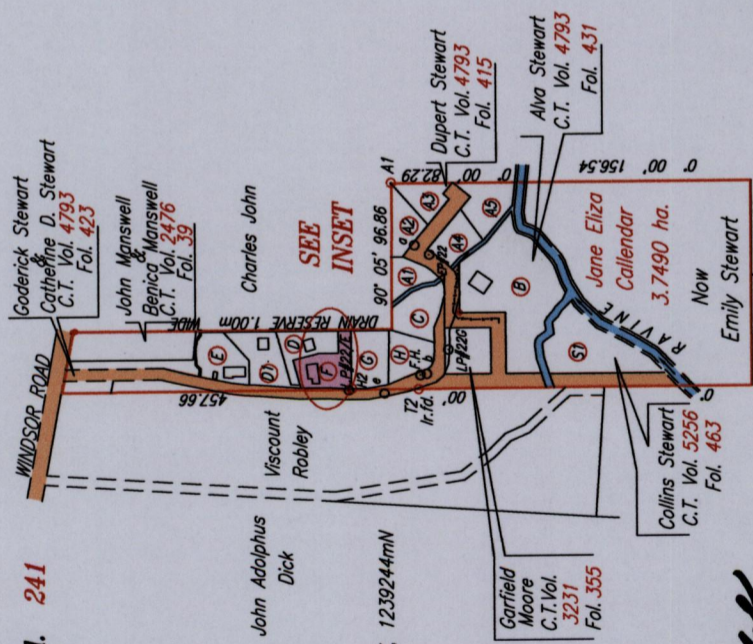


R.P.O. Vol. 933 Fol. 247
 C.T. Vol. 4708 Fol. 241

Cadastral Sheet I.19.E. 2J
 1/d/4
 Ward of Tobago
 Parish of St. Mary

Vide S.O. 27/39
 Bk. 797 Fol. 280
 Vide Bk. 1179 Fol. 45
 Vide Bk. 1103 Fol. 195

INSET



Coordinates of T2 (Ir.fid): 0757323mE, 1239244mN
 U.T.M. 20 Naparima (+/- 5.00m)
 G.P.S. Direct Observation

LEGEND

A1 - a	248° 31'	44.32
a - b	264° 47'	85.59
b - LP#220	132° 24'	21.33
b - e	335° 01'	31.14
e - T2	172° 42'	22.68
H2 - T2	181° 02'	44.40

Approved
 Director of Surveys 2/10/14

- Denotes Iron put except where otherwise stated
- Bearings are Cassini Grid based on Solar Observations

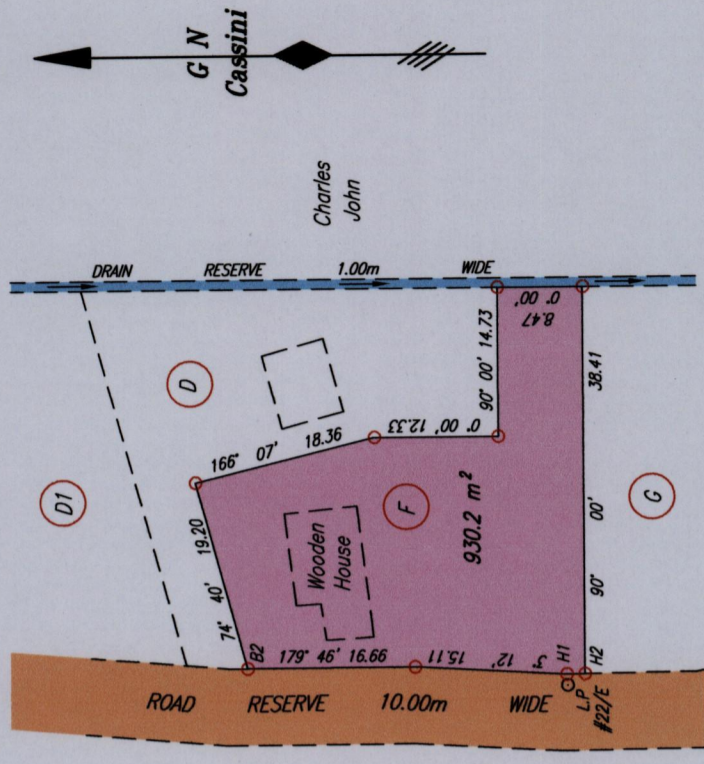
PLAN of a Parcel of land coloured pink in the Ward of Tobago
 Containing nine hundred and thirty point two square metres
 Surveyed by me, with due authority, in June 2013

Certified Correct in accordance with Regulation 25 (1) of The Land Surveyors Regulations 1998,

Checked by

Entered on

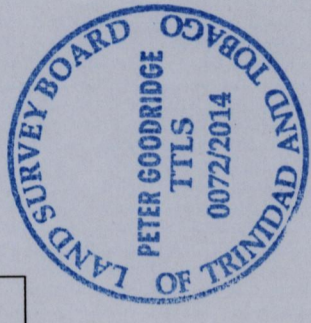
SCALE 1:5000
 Distances are in METRES



LEGEND

From	To	Bearing	Distance
H1	- H2	179° 11'	1.80
H2	- LP#22/E	326° 37'	2.01

SCALE 1:750
 Distances are in METRES



[Handwritten signature]

Trinidad & Tobago Land Surveyor
 C:\LESS 2013\TOBAGO\NELSON, YOUNG, MANSWELL TRACE, LOT #F.930.2sqm.dwg
 2014
 FILE NO: TMO29

13000

1300/171

171