

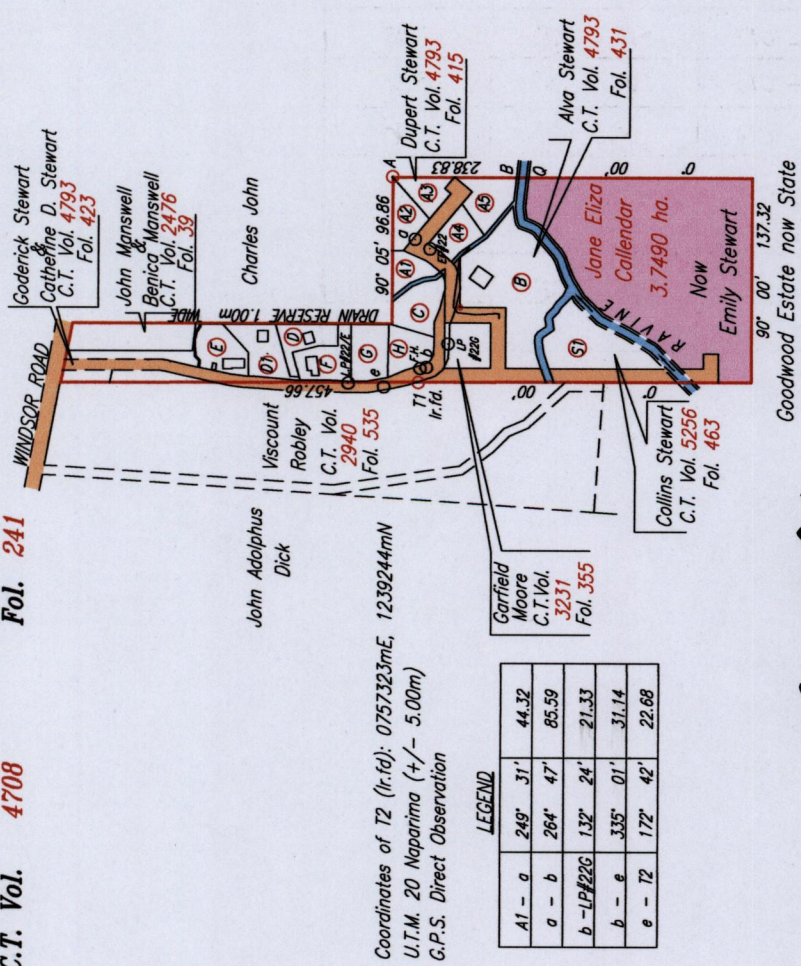
1300

1300/170

170

R.P.O. Vol. 933 Fol. 247  
C.T. Vol. 4708 Fol. 241

Cadastral Sheet I.19.E. 2J  
1/d/4  
Ward of Tobago  
Parish of St. Mary

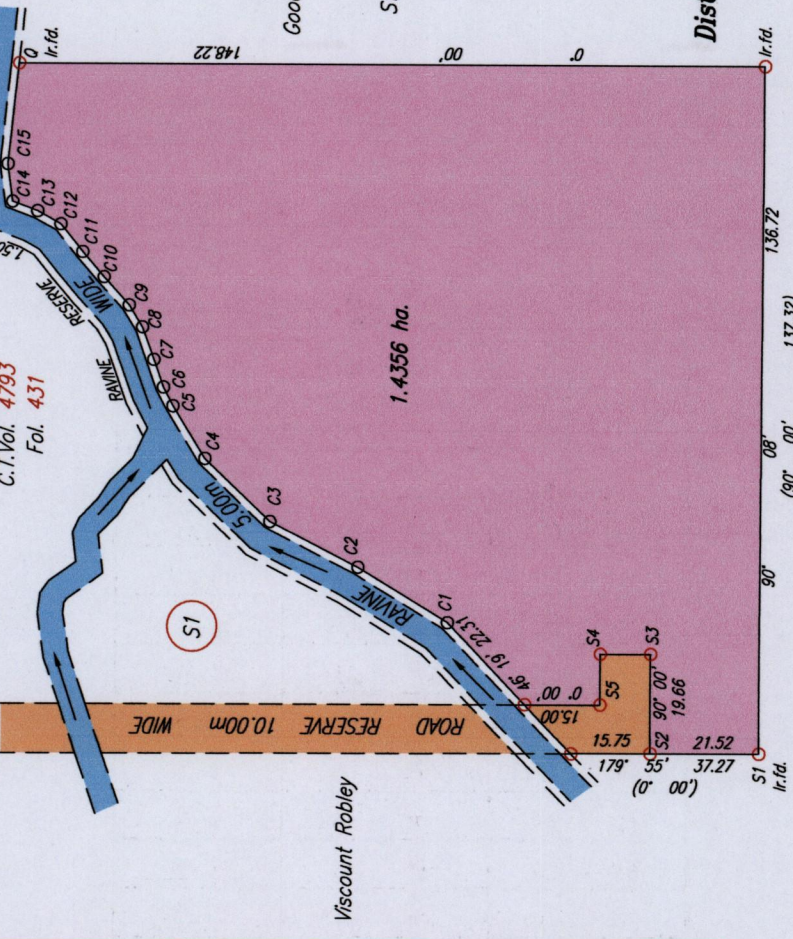


**INSET**

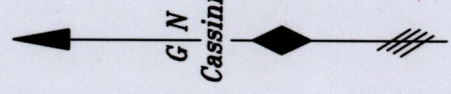
Vide S.O. 27/39  
Bk. 797 Fol. 280  
Vide Bk. 1179 Fol. 45  
Vide Bk. 1103 Fol. 195

(B)

(S1)



SCALE 1: 2000  
Distances are in METRES



LEGEND

A1 - a	249° 31'	44.32
a - b	264° 47'	85.59
b - IP#226	132° 24'	21.33
b - e	335° 01'	31.14
e - T2	172° 42'	22.68

Coordinates of T2 (Ir.fid): 0757323mE, 1239244mN  
U.T.M. 20 Naparima (+/- 5.00m)  
G.P.S. Direct Observation

Approved . . . . .  
*Maurice Gilbert*  
Director of Surveys

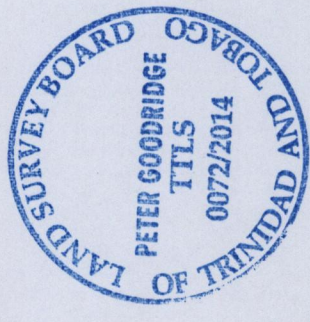
- Denotes Iron put except where otherwise stated
- Bearings are Cassini Grid based on Solar Observations

PLAN of a Parcel of land coloured pink in the Ward of Tobago  
Containing one point four three five six hectares  
Surveyed by me, with due authority, in July 2012

Certified Correct in accordance with Regulation 25 (1) of The Land Surveyors Regulations 1998,

Checked by *N.W. 8-10-2014* . . . . . TTLS

Entered on . . . . . Trinidad & Tobago Land Surveyor  
2nd October 2014  
C:\LESS 2014\CALLENDER, MAURICE, GILBERT & DONALD.dwg FILE NO: TC069



P.T.O. For LEGEND

LEGEND

<i>From</i>	<i>To</i>	<i>Bearing</i>	<i>Distance</i>
S3	- S4	0° 00'	10.00
S4	- S5	270° 00'	10.00
C1	- C2	31° 31'	20.98
C2	- C3	27° 19'	19.77
C3	- C4	43° 50'	18.08
C4	- C5	58° 23'	12.23
C5	- C6	62° 37'	4.18
C6	- C7	70° 27'	5.79
C7	- C8	70° 13'	6.85
C8	- C9	58° 36'	5.12
C9	- C10	47° 51'	7.50
C10	- C11	49° 34'	6.59
C11	- C12	51° 32'	7.08
C12	- C13	29° 16'	5.32
C13	- C14	20° 36'	5.30
C14	- C15	82° 24'	7.51
C15	- Q	95° 55'	20.08
A1	- B	180° 00'	82.29
B	- Q	180° 00'	8.09

1300/170