

13000

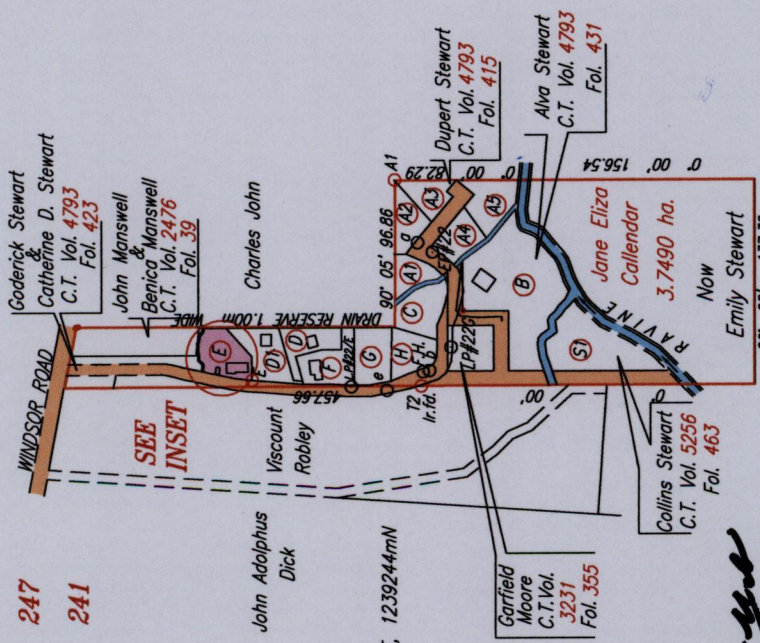
1300/167

167

R.P.O. Vol. 933 Fol. 247  
C.T. Vol. 4708 Fol. 241

Cadastral Sheet I.19.E. 2J  
1/d/4  
Ward of Tobago  
Parish of St. Mary

Vide S.O. 27/39  
Bk. 797 Fol. 280  
Vide Bk. 1179 Fol. 45  
Vide Bk. 1103 Fol. 195



Coordinates of T2 (r.r.id): 0757323mE, 1239244mN  
U.T.M. 20 Naparima (+/- 5.00m)  
G.P.S. Direct Observation

LEGEND

A1 - a	249° 31'	44.32
a - b	264° 47'	85.59
b - LP226	132° 24'	21.33
b - e	335° 01'	31.14
e - T2	172° 42'	22.68
E - T2	182° 05'	112.26

Approved . . . . .  
Director of Surveys  
*W/OIM*

○ Denotes Iron put except where otherwise stated  
Bearings are Cassini Grid based on Solar Observations

PLAN of a Parcel of land coloured pink in the Ward of Tobago  
Containing nine hundred and thirty-two point two square metres

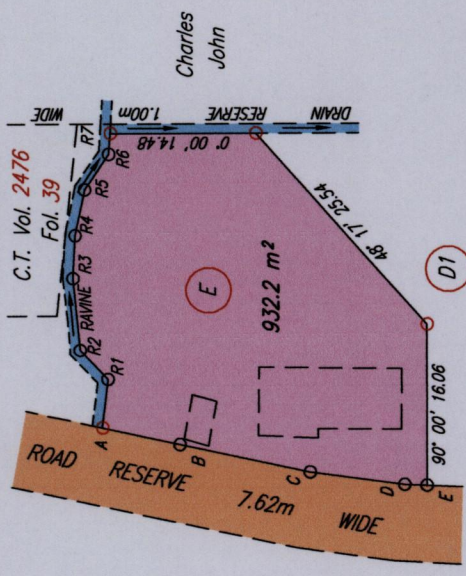
Surveyed by me, with due authority, in June 2013

Certified Correct in accordance with Regulation 25 (1) of The Land Surveyors Regulations 1998,

Checked by . . . . .  
N.W. 10-8-2014

Entered on . . . . .  
Trinidad & Tobago Land Surveyor  
C:\LESS 2013\TOBAGO\MERR, JAN, MANSWELL TRACE, LOT #E.931.8sqm.dwg. FILE NO:TK019

INSET



SCALE 1:750  
Distances are in METRES

LEGEND

From	To	Bearing	Distance
A	- B	192° 12'	7.90
B	- C	192° 02'	13.23
C	- D	187° 43'	9.50
D	- E	182° 29'	2.21

RAVINE LEGEND

From	To	Bearing	Distance
A	- R1	96° 57'	4.88
R1	- R2	46° 33'	4.01
R2	- R3	84° 14'	7.23
R3	- R4	92° 58'	4.26
R4	- R5	101° 50'	4.62
R5	- R6	124° 13'	4.27
R6	- R7	93° 43'	2.07

