

1300

1300/165

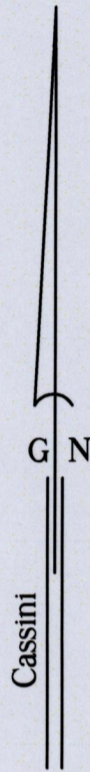
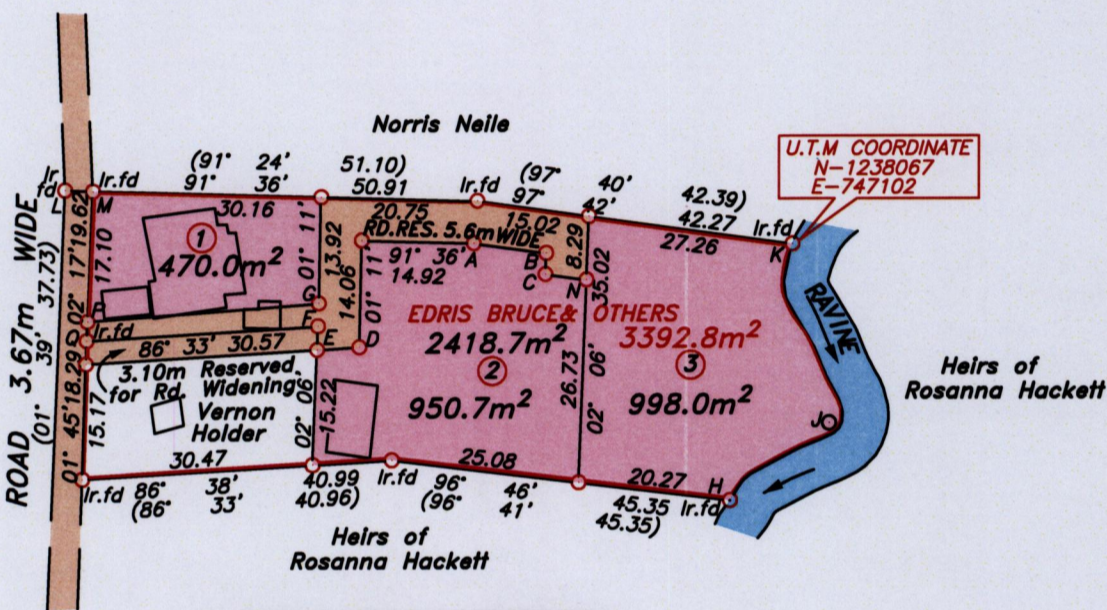
165

U.P.R.N.....
R.P.O Vol. Fol.
C.T Vol. 2526 Fol. 191

Cadastral Sheet I.17.J ^{2A}/_{3/b/3}
Ward of Tobago
Parish of St. Andrew
GLEN ROAD



Vide Bk.1074 Fol. 215



LINE	AZIMUTH	DISTANCE
A-B	97° 42'	9.74
B-C	182° 05'	2.76
C-N	97° 42'	5.53
L-M	92° 28'	3.69
P-G	85° 39'	30.63
Q-F	86° 33'	30.59
E-F	02° 06'	3.11
F-G	02° 01'	3.01
E-D	86° 33'	5.61
H-J	52° 08'	16.62
J-K	348° 07'	24.05



Approved

[Signature]
Director of Surveys 13/10/14

○ Denotes iron put, except otherwise stated.

SCALE 1:1000

Bearings are grid based on solar observations

Distances are in metres

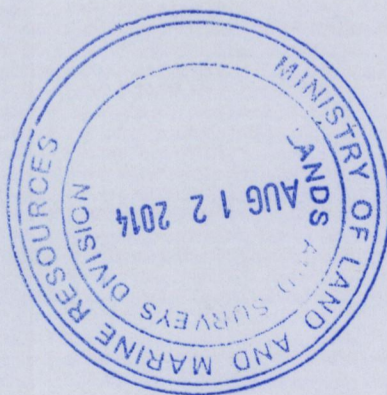
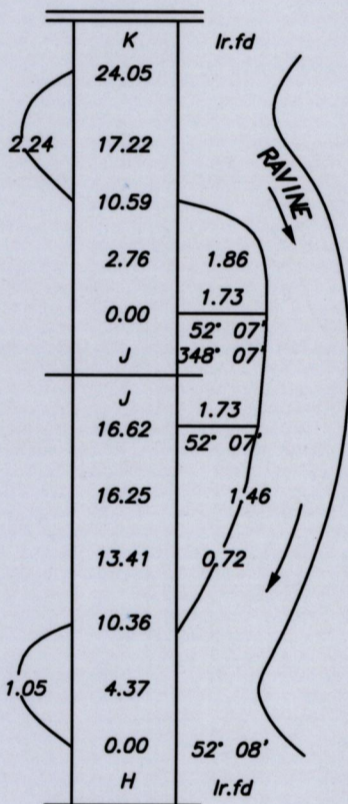
PLAN of 3 parcels of land coloured pink in the Ward of Tobago
Containing together two thousand four hundred and eighteen point seven square metres.
Surveyed by me, with due authority on 24th April 2002
Certified Correct in accordance with Regulation 25 (1) of the Land Surveyors Regulations 1998.

Checked by.....
Entered on.....

[Signature]
11th August 2014

Trinidad & Tobago Land Surveyor.....2014

path:02SURVEY\H042\VHOLDER.DWG



1300/165