

13000

1300/164

164

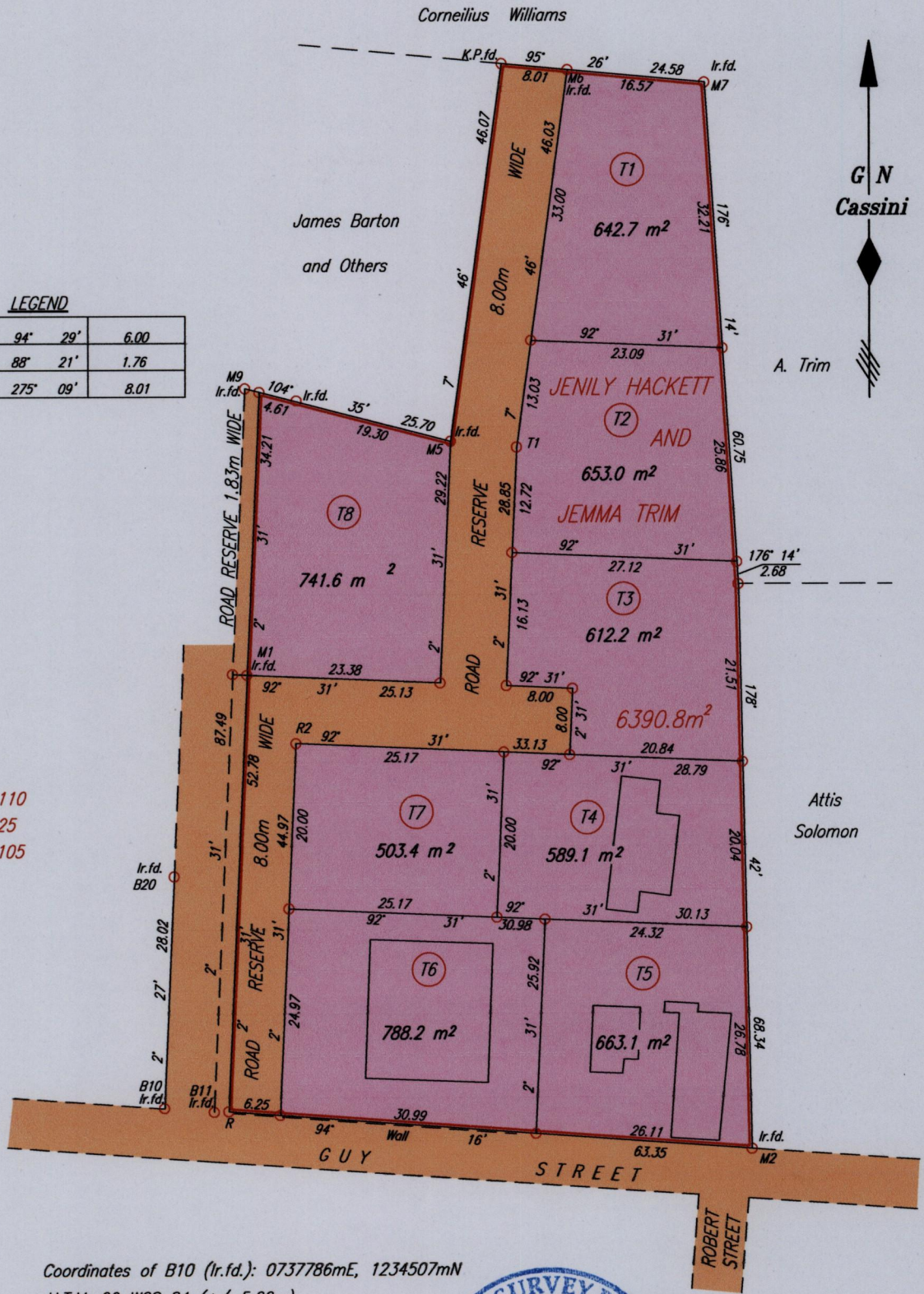
CANAAN

**LEGEND**

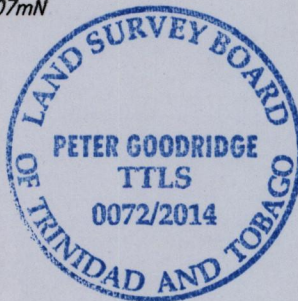
B10 - B11	94° 29'	6.00
B11 - R	88° 21'	1.76
T1 - M5	275° 09'	8.01

**References:**

- Bk. 1095 Fol. 110
- Bk. 965 Fol. 25
- Bk. 1177 Fol. 105



Coordinates of B10 (lr.fd.): 0737786mE, 1234507mN  
 U.T.M. 20 WGS 84 (+/-5.00m)  
 G.P.S. Direct Observation using a handheld GPS



Approved by *[Signature]*  
 Director of Surveys 6/10/14

SCALE 1:750

- Denotes Iron put except where otherwise stated
- Bearings are Cassini Grid based on Solar Observations

Distances are in METRES

PLAN of 8 Parcels of land coloured pink in the Ward of Tobago  
 Containing together five thousand one hundred and ninety-three point three square metres  
 Surveyed by me, with due authority, in August 2013  
 Certified Correct in accordance with Regulation 25 (1) of The Land Surveyors Regulations 1998,

Checked by *[Signature]* .TTLS

Entered on .....  
 Trinidad & Tobago Land Surveyor 15<sup>th</sup> July 2014  
 C:\LESS 2014\TOBAGO\TRIM, JEMMA, GUY STREET, CANAAN.dwg FILE NO:TT064