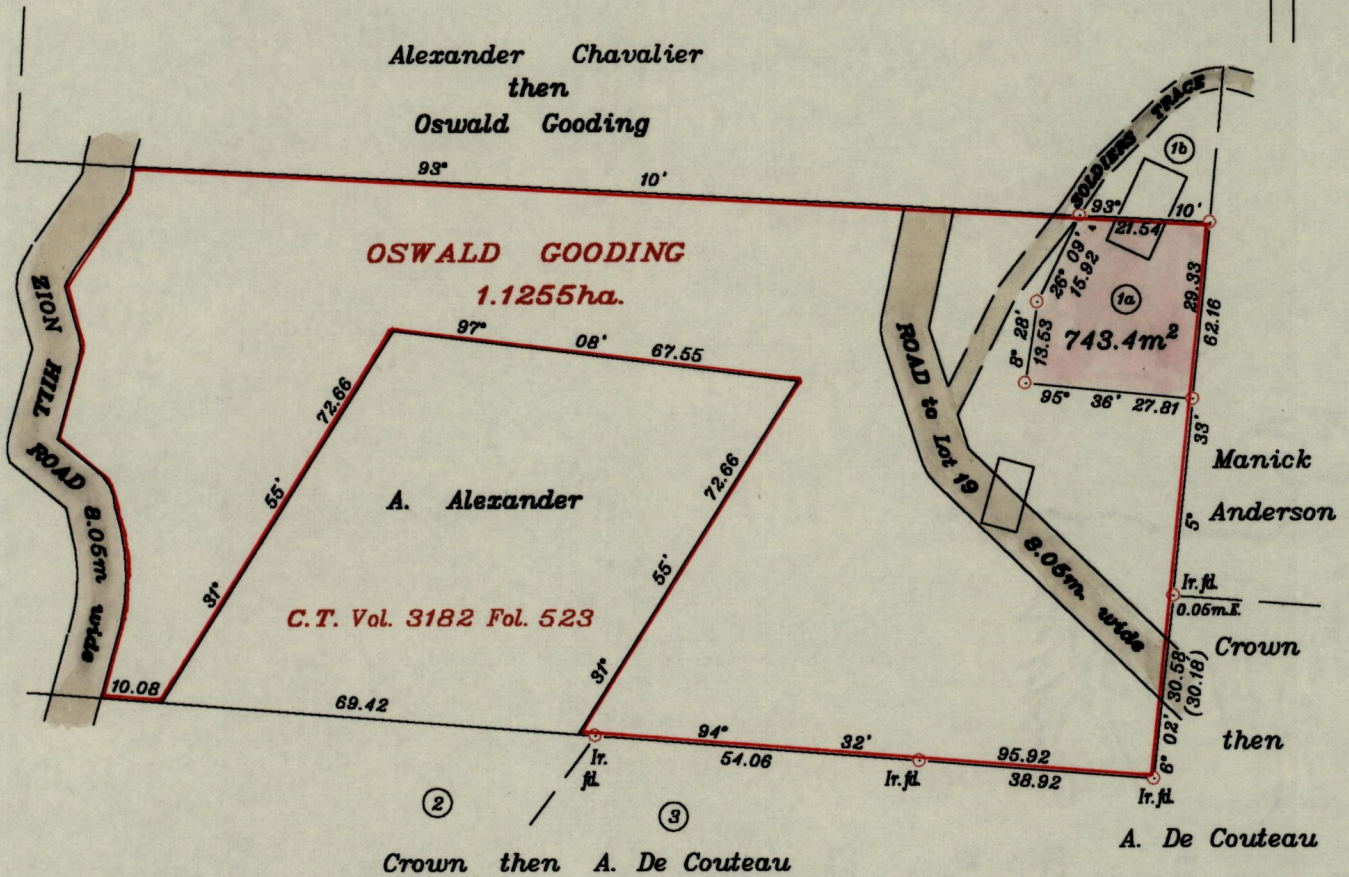
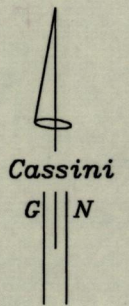


R.P.O. Vol. 155 Fol. 211
C.T. Vol. 3315 Fol. 369

Cadastral Sheet I.14.K
Ward of Tobago
Parish of St. Mary
Bk. 524 Fol. 201

Vol. 4544 Fol. 211



Plots no. 1a & 1b to be amalgamated

Approved *[Signature]*
or Director of Surveys 2003.2.24

SCALE 1 : 1250
Distances are in metres

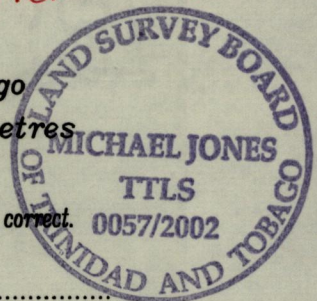
○ Denotes Ir.pt. except otherwise stated.

Oswald Gooding & Velton Baptiste

Bearings are based on Solar observations.

PLAN of a parcel of land coloured pink in the Ward of Tobago
Containing Seven hundred and forty three point four sq.metres
Surveyed by me with due authority in September, 1992

In accordance with Reg. 25(1) of the Land Surveyors' Regulations 1998, I certify that this plan is correct.



Checked by *[Signature]*

[Signature]

Entered on..... Trinidad & Tobago Land Surveyor 27th December....., 2002.