

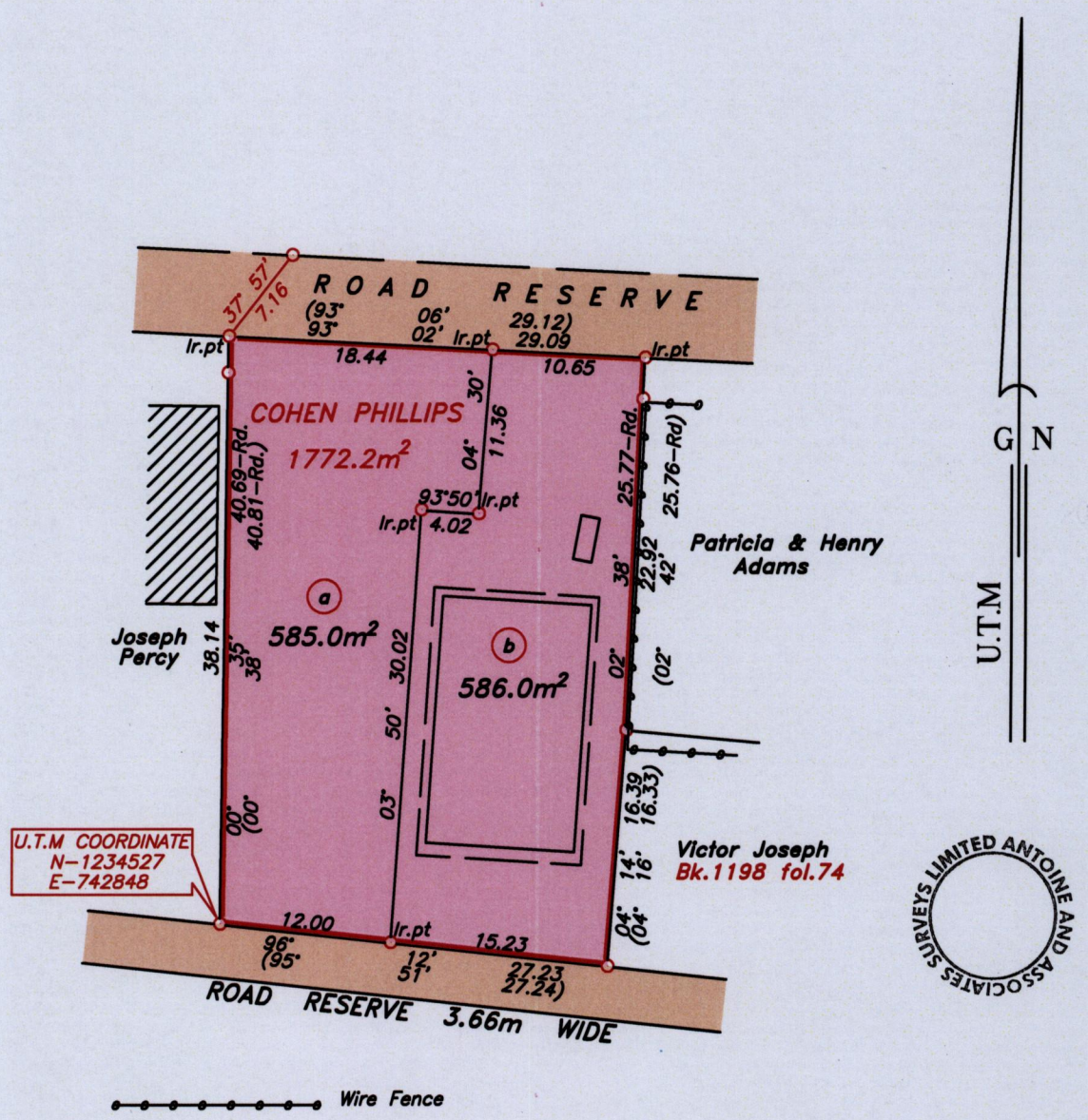
1300

1300/152

152

U.P.R.N.....
R.P.O Vol. Fol.
C.T Vol. 5510 Fol. 213

Cadastral Sheet I.22. $\frac{1J}{2/b}$
Ward of Tobago
Parish of St. Patrick
LOWLANDS



Note- UTM Zone 20 (WGS 84) Coordinates obtained from hand held GPS receiver
± 5.00m

Approved *[Signature]*
Director of Surveys 27/11/14

○ Denotes iron found, except otherwise stated.

SCALE 1:500

Bearings are grid based on solar observations

Distances are in metres

PLAN of 2 parcels of land coloured pink in the Ward of Tobago
Containing together one thousand one hundred and seventy one point zero square metres.
Surveyed by me, with due authority on 19th November 2013
Certified Correct in accordance with Regulation 25 (1) of the Land Surveyors' Regulations 1998.

Checked by.....
Entered on.....

[Signature]

Trinidad & Tobago Land Surveyor..... 27th June 2014
Path: \\AASL-SERVER\2013survey\P194\PHILLIPS.DWG