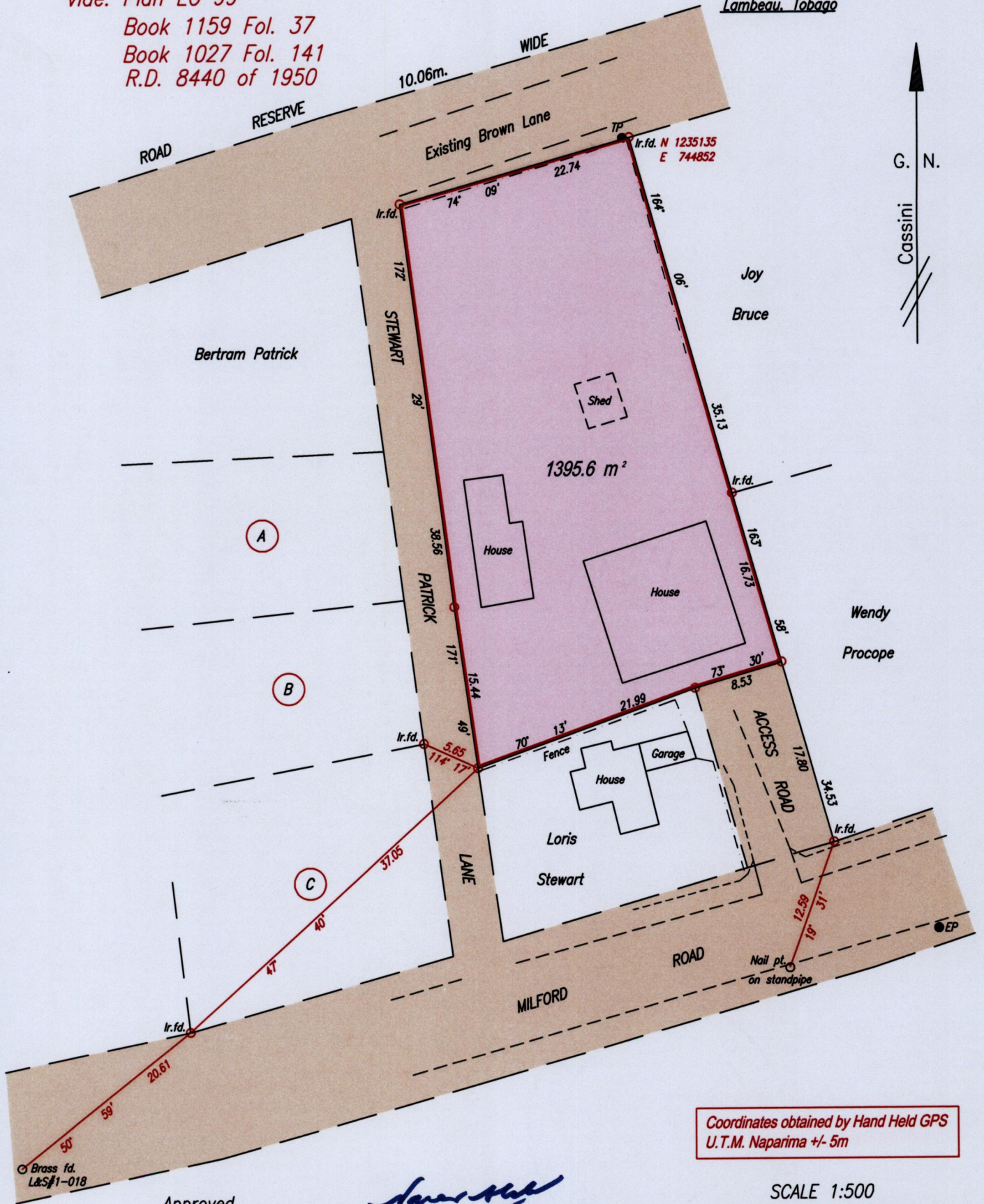


To be brought under the provisions of the Real Property Act.

Cadastral Sheet I.17. 1F  
Ward of Tobago 6/d  
Parish of St. Andrew  
Lambeau, Tobago

Vide: Plan EG 99  
Book 1159 Fol. 37  
Book 1027 Fol. 141  
R.D. 8440 of 1950



Coordinates obtained by Hand Held GPS  
U.T.M. Naparima +/- 5m

Approved

*[Signature]*  
Director of Surveys 30/6/14

SCALE 1:500  
Distances are in metres

○ Denotes Iron put except where otherwise stated  
Bearings are Cassini grid based on solar Observations  
PLAN of a Parcel of land coloured pink in the Ward of Tobago  
Containing one thousand three hundred and ninety five point six square metres  
Surveyed by me, with due authority, on August 17th 2013 at the request of Lloyd Stewart  
Certified correct in accordance with Regulation 25 (1) of The Land Surveyors Regulations 1998,



Checked by *Bhaghirathi Maharaj*

Entered on. . . . . Trinidad & Tobago Land Surveyor. . . . . 6th January, 2014.