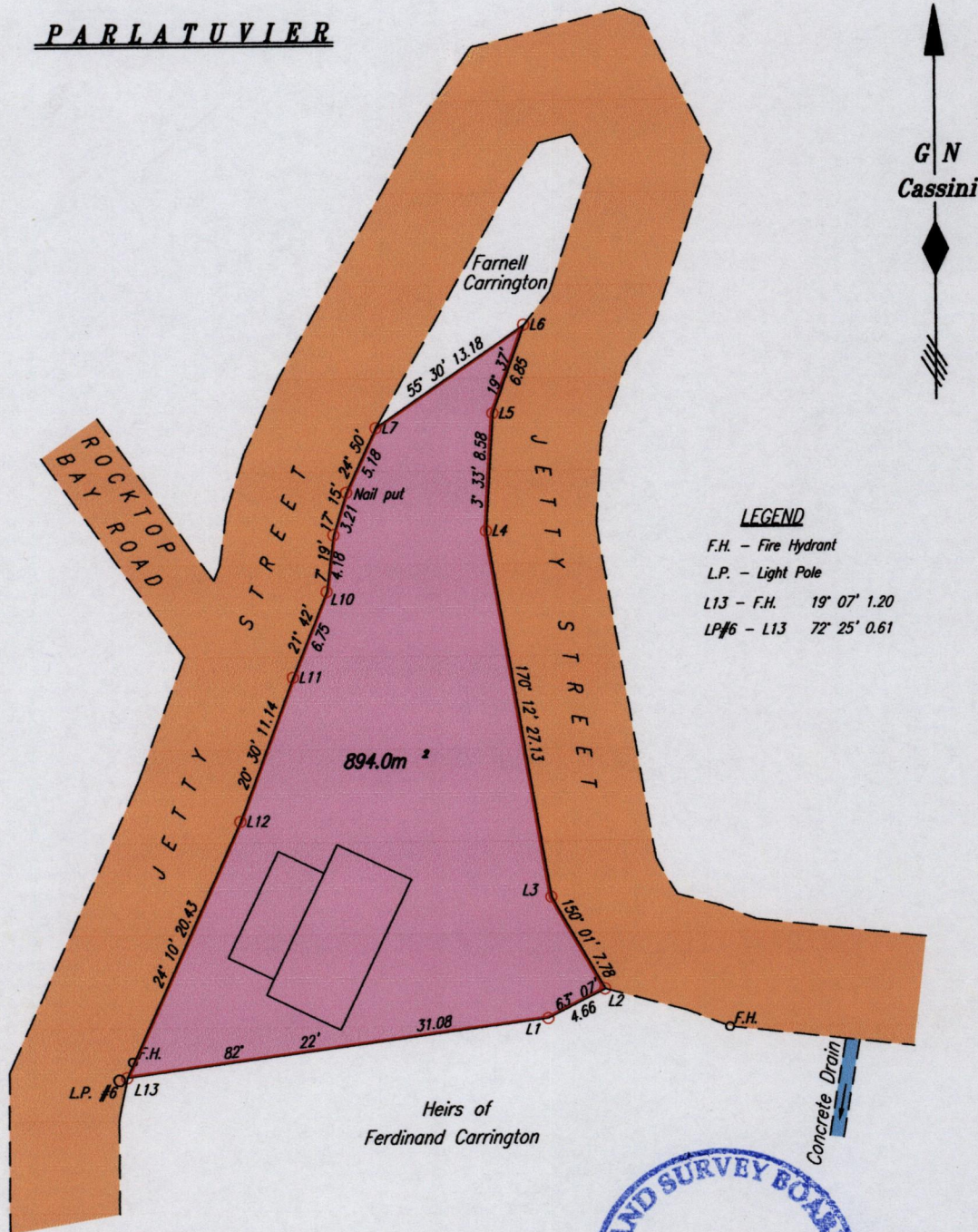


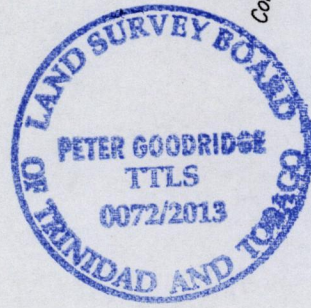
To be brought under the provisions of The Real Property Ordinance

PARLATUVIER



**LEGEND**  
 F.H. - Fire Hydrant  
 L.P. - Light Pole  
 L13 - F.H. 19° 07' 1.20  
 LP#6 - L13 72° 25' 0.61

Coordinates of L1 (lr. put): 0756428mE, 1250045mN  
 U.T.M. 20 Naparima (+/- 6m)  
 G.P.S. Direct Observation using handheld receiver



SCALE 1 : 500  
 Distances are in METRES

Approved .....  
 Director of Surveys 5/4/14

○ Denotes Iron put except where otherwise stated  
 Bearings are Cassini Grid based on Solar Observations

PLAN of a Parcel of land coloured pink in the Ward of Tobago  
 Containing eight hundred and ninety four point zero square metres  
 Surveyed by me, with due authority, on the 9th March 2010 for Ruth Venita Lewis  
 Certified Correct in accordance with Regulation 25 (1) of The Land Surveyors' Regulations 1998,

Checked by ..... TTLS

Entered on ..... 2013  
 Trinidad & Tobago Land Surveyor  
 C:\LESS 2013\Tobago\Lewis, John E.\.dwg. FILE NO: TL025