

GOODWOOD

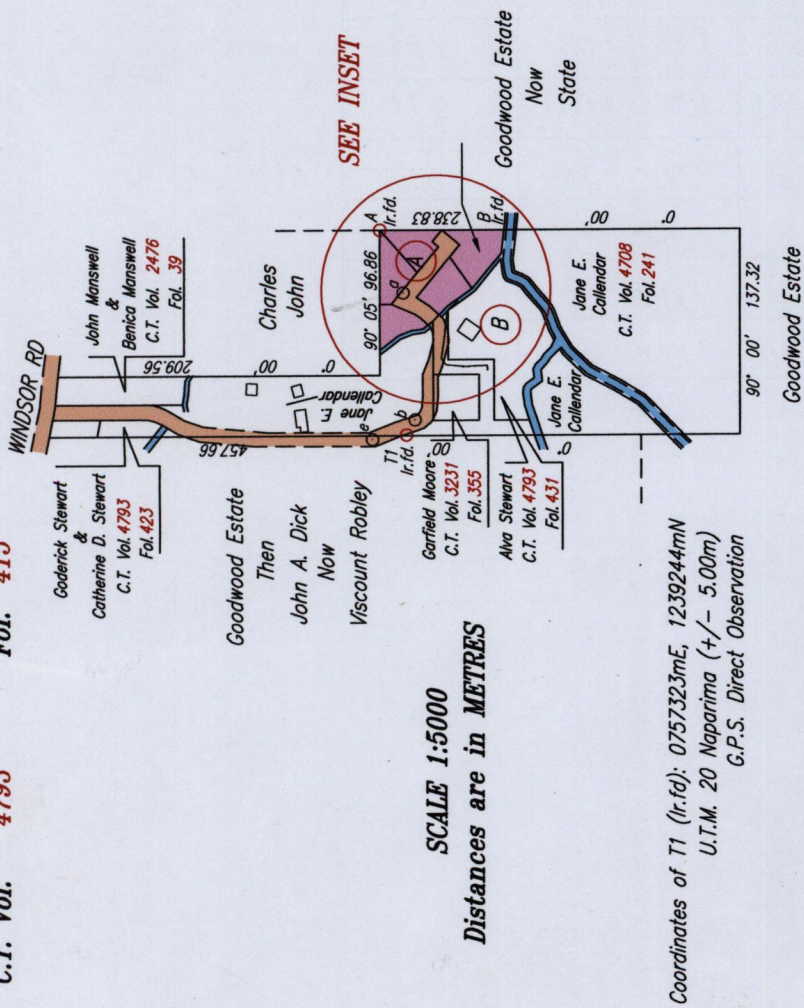
R.P.O. Vol. 933 Fol. 247
 C.T. Vol. 4793 Fol. 415

13000

Vide S.O. 27/39
 Bk. 797 Fol. 280
 Vide Bk. 1179 Fol. 45
 Vide Bk. 1103 Fol. 195



INSET



SCALE 1:5000
 Distances are in METRES

Coordinates of T1 (I.r.id): 0757323mE, 1239244mN
 U.T.M. 20 Naparima (+/- 5.00m)
 G.P.S. Direct Observation

Approved *[Signature]*
 Director of Surveys 2010.2.5

○ Denotes Iron put except where otherwise stated

Bearings are Cassini Grid based on Solar Observations

PLAN of 5 Parcels of land coloured pink in the Ward of Tobago

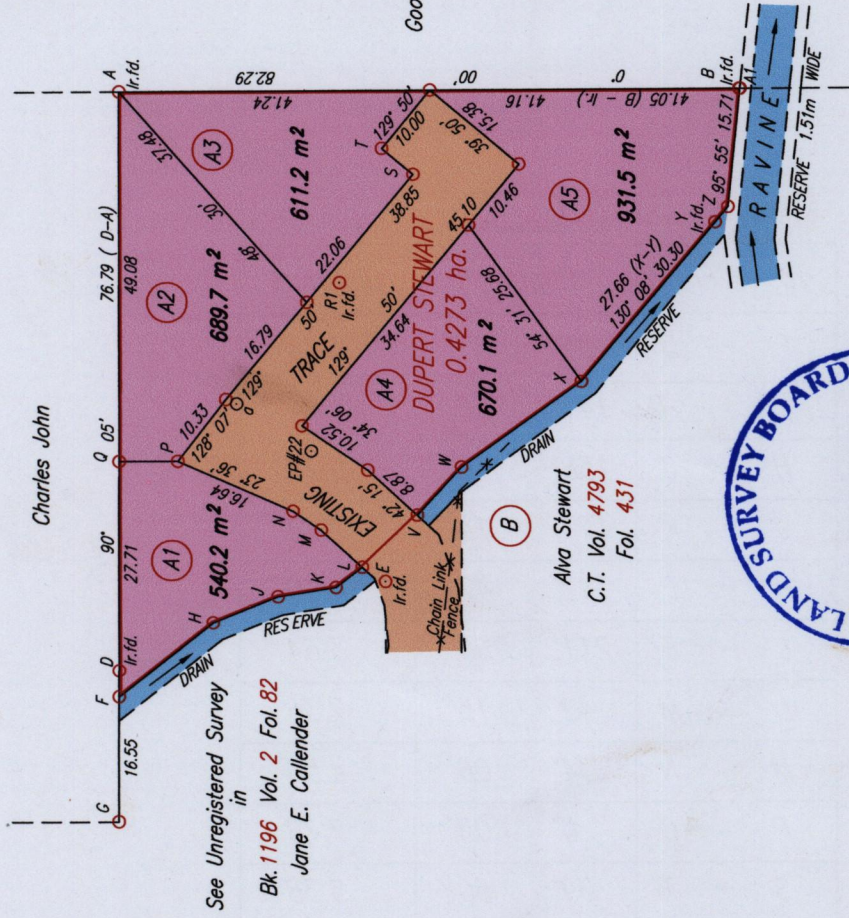
Containing together three thousand four hundred and forty two point seven square metres
 Surveyed by me, with due authority, in October 2008 for Dupert Stewart

In accordance with Regulation 25 (1) of The Land Surveyors' Regulations 1998,

I certify that this plan is correct.

Checked by *[Signature]* 2/12/10

Entered on



SCALE 1:1000

Distances are in METRES

10900

Lot #	CT. Val & Folio	Names
(A1)	CT 5249 fol 205	Shurland Stewart.
(A2)	CT 5249 fol 195	Anshell & Dupert Stewart.
(A3)	CT. 5249 fol. 213	EVELYN DOUGLAS
(A4)	CT 5249 fol 227	Dwain Stewart.
(A5)	CT 5249 fol 219	Dorson Stewart.

LEGEND

To - From	Bearing	Distance
F - D	90° 05'	3.46
F - H	141° 56'	15.84
H - J	158° 16'	9.24
J - K	171° 14'	7.78
K - L	142° 47'	4.40
L - E	211° 30'	3.64
L - M	42° 15'	7.36
M - N	34° 06'	4.50
P - Q	0° 05'	7.78
S - T	39° 50'	5.38
V - W	132° 58'	8.62
W - X	144° 46'	19.50
Y - Z	130° 08'	2.64
B - A1	180° 00'	0.11
A - a	249° 31'	8.86
a - b	264° 47'	17.12
b - e	335° 01'	6.23
e - T1	172° 42'	4.54



now 1300/192
~~now 1311/199~~
 +333/92