

1300

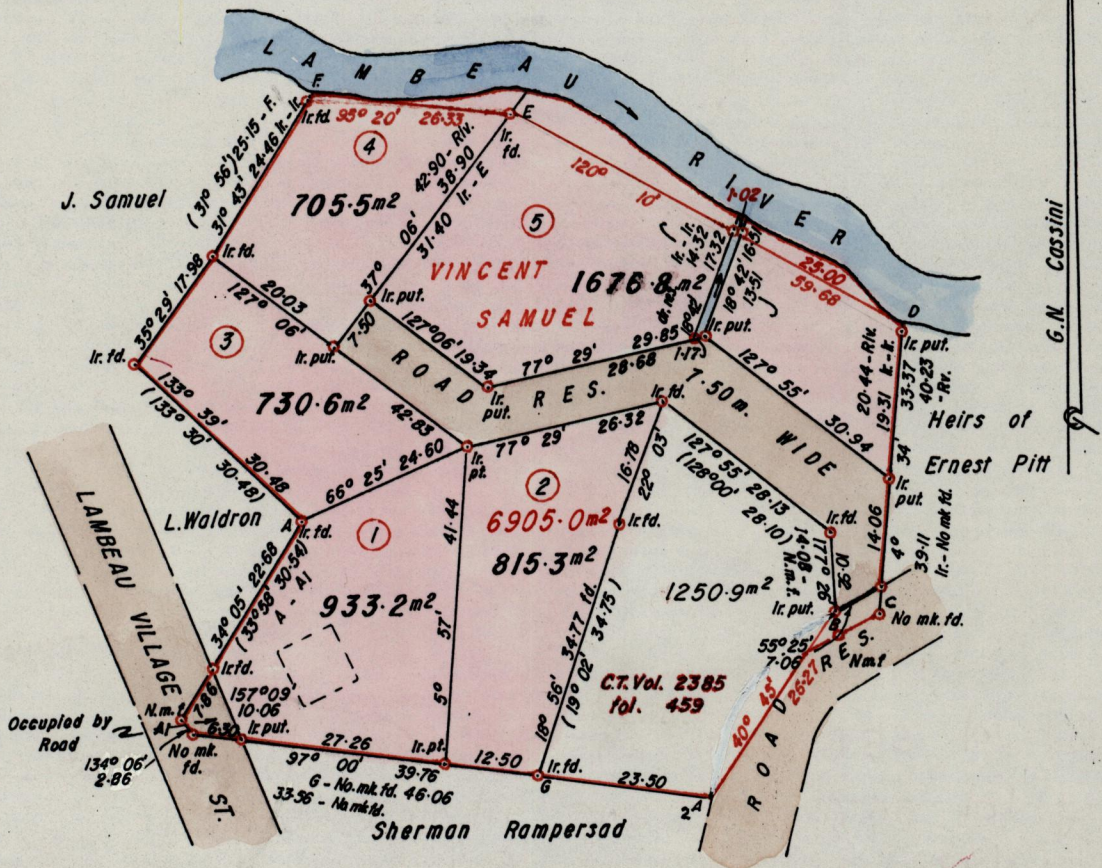
No 11283

R.P.O. Vol.
C.T. Vol. 2148
Vol. 5175

Fol.
Fol. 259
Fol. 161

Ward of Tobago
Parish of St. Andrew
Cadastral Sheet $\frac{1F}{6/d}$, 1. 17.

LAMBEAU VILLAGE



Approved

Yvonne King

Director of Surveys

29.4.97

Bearings are based on Solar Obs.

Note: To obtain compass bearings add/subtract

PLAN of 5 Parcelsof land coloured pink in the Ward of Tobago

Containing together four thousand eight hundred and sixty one point four square metre
Surveyed by me, with due authority, in April 1997

I certify that I have complied with rule 76 under section 14(2)(d) of the
Land Surveyors' Ordinance 1952, and that this plan is correct.

Checked by *SY* 99.04.09

Handwritten signature

Entered

Land Surveyor, Trinidad 14th November 1998

G.P., Tr./To.—943—20,000—/83

Ref. Bk. 980 : 196

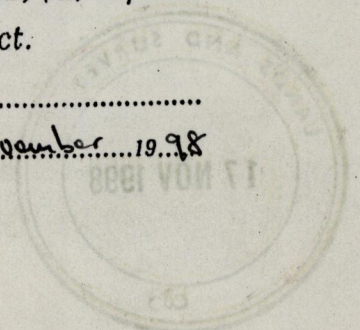
Bk. 1049 : 222

Denotes Iron put.

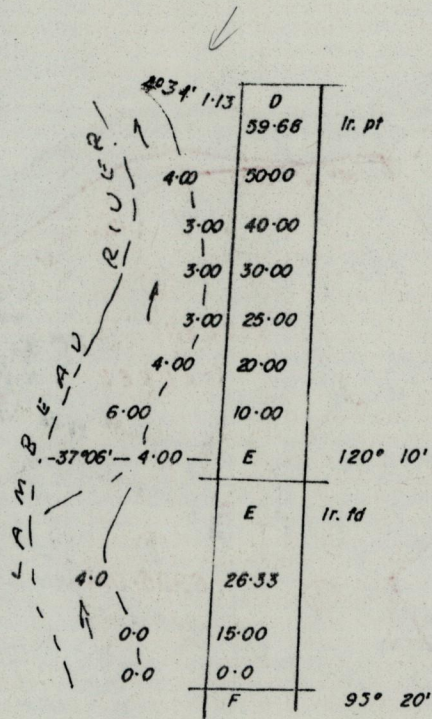
SCALE 1 / 1000

minutes

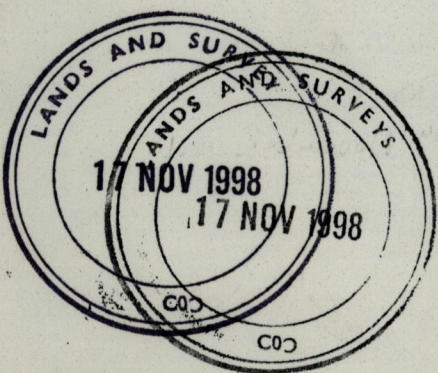
Distances are in metres



Original Bk. 1049 fol. 222



- (1) Vol. 5578 Fol. 293 Monica Samuel & Rebecca Samuel Musgrave
- (2) Vol. 5578 Fol. 295 Matthew Samuel
- (3) Vol. 5578 Fol. 281 Cornelius Samuel
- (4) Vol. 5175 Fol. 167 Roger Holder
- (5) Vol. 5175 Fol. 169 Roger Holder



1309/05
1249/75