

R.P.O. VOL. 933

FOL. 247

130003
REMAINING PORTION

104
Ward of Tabago

C.T. VOL. 4708

FOL. 241

Parish of St. Mary

Cadastral Sheet I.19.E.

Vol. 4941 Fol. 501

GOODWOOD

Vide S.O. 27/39

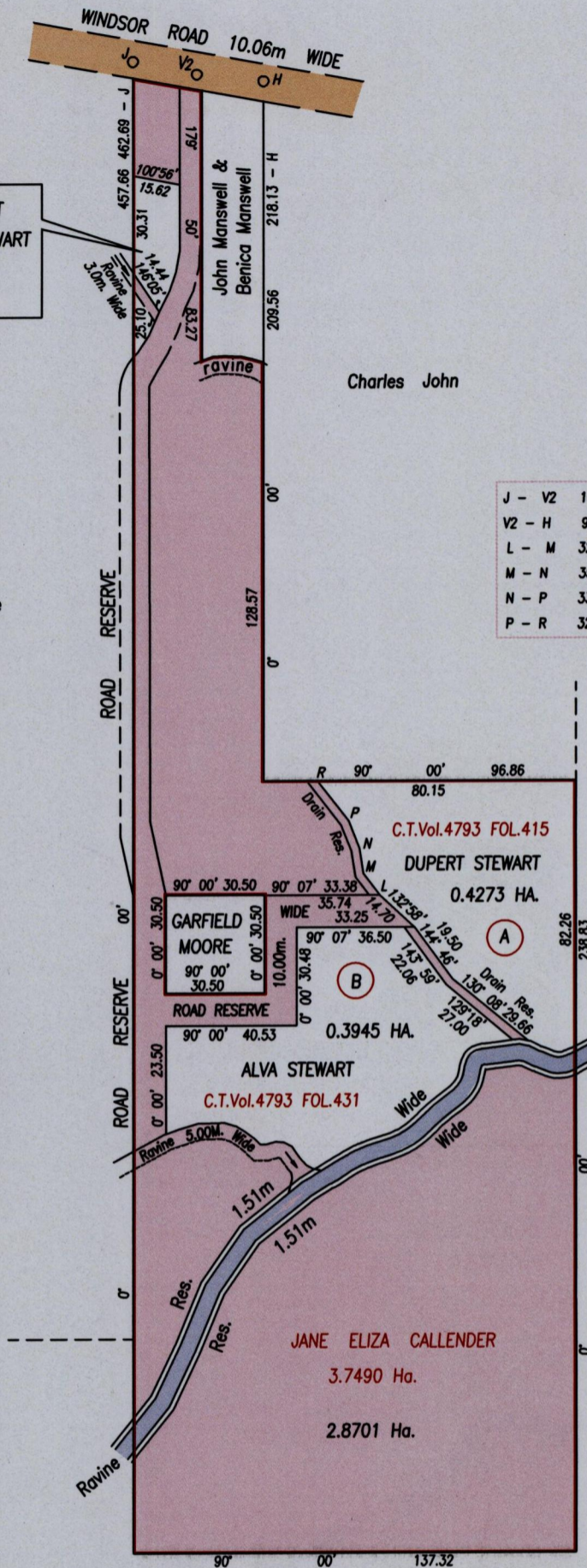
Bk.797 Fol.280

Vide Bk.1179 Fol.45

Vide Bk.1103 Fol.195

GODERICK STEWART
& CATHERINE DOUGLAS STEWART
570.8 M²
C.T.Vol.4793 FOL.423

Goodwood Estate
then
John A. Dick
now
Viscount Robley



J - V2	101° 23'	20.21
V2 - H	96° 00'	20.82
L - M	322° 47'	8.39
M - N	351° 14'	7.78
N - P	338° 16'	9.24
P - R	321° 56'	15.72



Goodwood Estate now State

SCALE 1/2000

Distances are in metres

Approved . . . *[Signature]* . . .
Director of Surveys
2007.7.4

This is a true copy of a diagram of three point seven four nine zero hectares, originally transferred to Jane Eliza Callender, showing portions coloured pink, containing two point eight seven zero one hectares being the remainder after three previous transfers, of other portions of the land.

In accordance with Regulation 25 (1) of The Land Surveyors' Regulations 1998.

I certify that this plan is correct.

Checked by *[Signature]* 20/6/07

[Signature]

Entered on Trinidad & Tobago Land Surveyor. *[Signature]* 2007