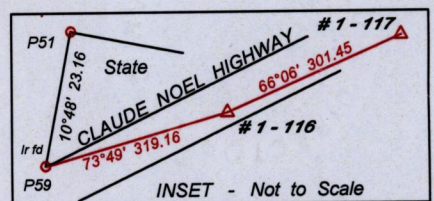
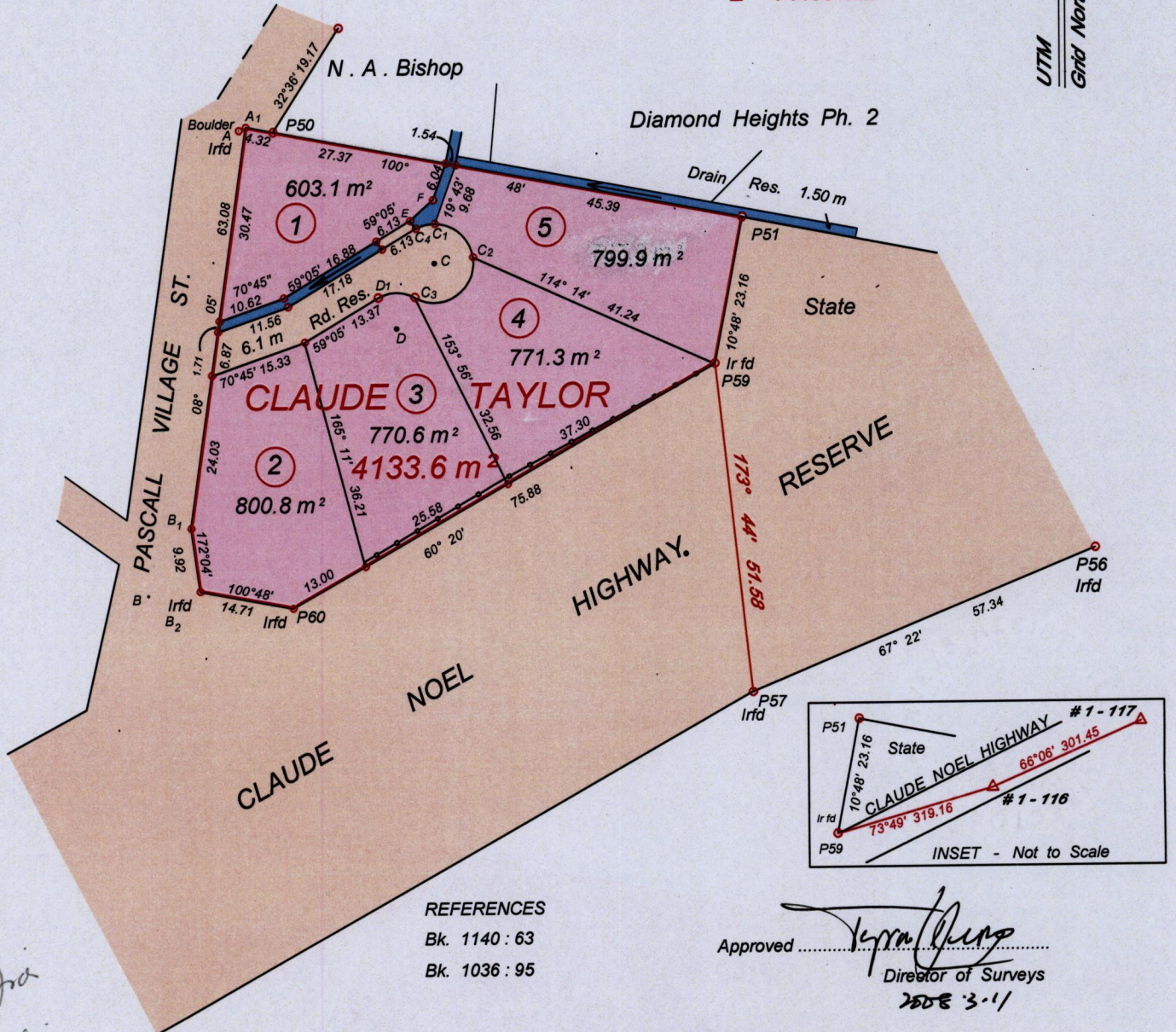


Vol. 5044 Fol. 477

C - C ₁	01° 14'	6.10
C - C ₂	81° 40'	6.10
C - C ₃	210° 20'	6.10
C - C ₄	331° 55'	6.10
D - D ₁	329° 05'	5.59
D - C ₃	30° 20'	5.59

A - A ₁	64° 20'	1.18
A - B	191° 17'	73.87
B - B ₁	32° 20'	12.42
B - B ₂	85° 15'	8.04
P59 - #1-116	73° 49'	319.16
E - F	48° 18'	4.84

#1-116 - N 1235670.47
E 744551.22



REFERENCES
Bk. 1140:63
Bk. 1036:95

Approved *[Signature]*
Director of Surveys
2008 3/1

To negotiate for name

— Highway Fence
○ denotes iron put unless otherwise stated
Bearings are UTM grid based L&S Control Brasses
#1-116 - #1-117 66° 06' 15" 301.45



SCALE 1 : 1000
Distances are in metres

Plan of 5 parcels of land coloured pink in the Ward of Tobago,
Containing together Three thousand seven hundred and forty five point seven square metres
Surveyed by me with due authority, in December 2003 for Claude Taylor.
I hereby certify, that in accordance with Reg. 25(1) of the Land Surveyors Regulations 1998,
this plan is correct.

Checked by *[Signature]*
Entered on

[Signature]
Trinidad and Tobago Land Surveyor 14th November 2007

Lot #	C.T. Vol & Folio	Names
1.		
2.	5446 fol 309	Kathy-ann King Taylor.
3.	Vol. 5044 Fol. 403	
4.		
5.		

