

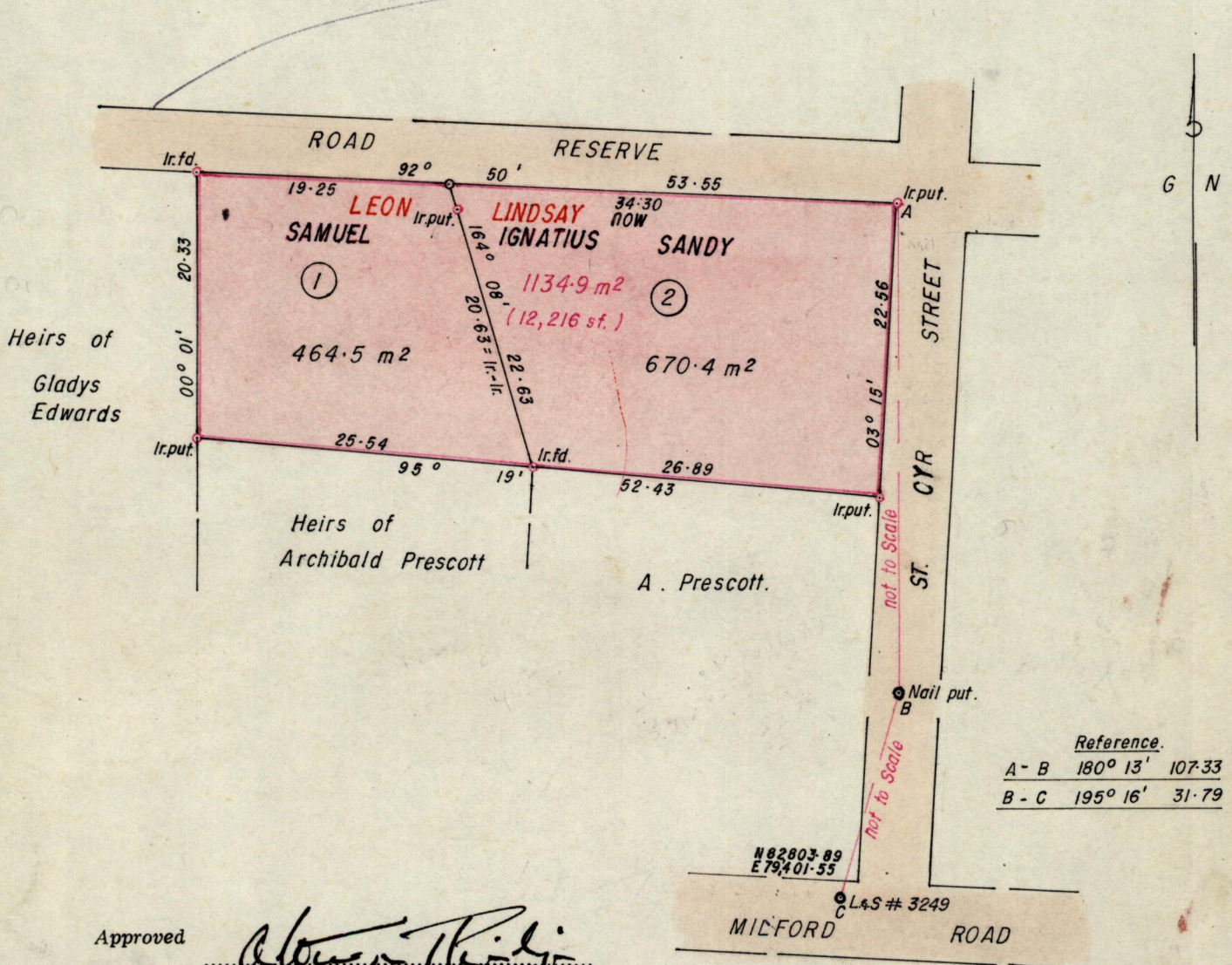
No 12945

R.P.O. Vol. C.T. Vol. 1903

Fol. 151

Ward of Tobago Parish of St Patrick Cadastral Sheet 1.21.C. (I.E. / 6.B.4)

VOL 4394 FOL 469



Approved

Alwyn Phillip
Director of Surveys
89.05.03

Bearings are Grid based on Solar Observations.
Note: To obtain compass bearings add/subtract

SCALE 1:500
minutes

Distances are in metres.

PLAN of 2 Parcelsof land coloured pink in the Ward of Tobago
Containing together one thousand , one hundred and thirty four point nine square metres.
Surveyed by me, with due authority, on 29th February 1984 at the request of Arlene Sandy.
I certify that I have complied with rule 76 under section 14(2)(d) of the
Land Surveyors' Ordinance 1952, and that this plan is correct.

Checked by *A. L. D. 2/5/89*

Horace A. Delisle
Land Surveyor, Trinidad 5th September 1984

300
Dres. Bk 1012: 128

1. VOL 4397 FOL. 331 ARLENE SANDY LEGALL
- 2.