

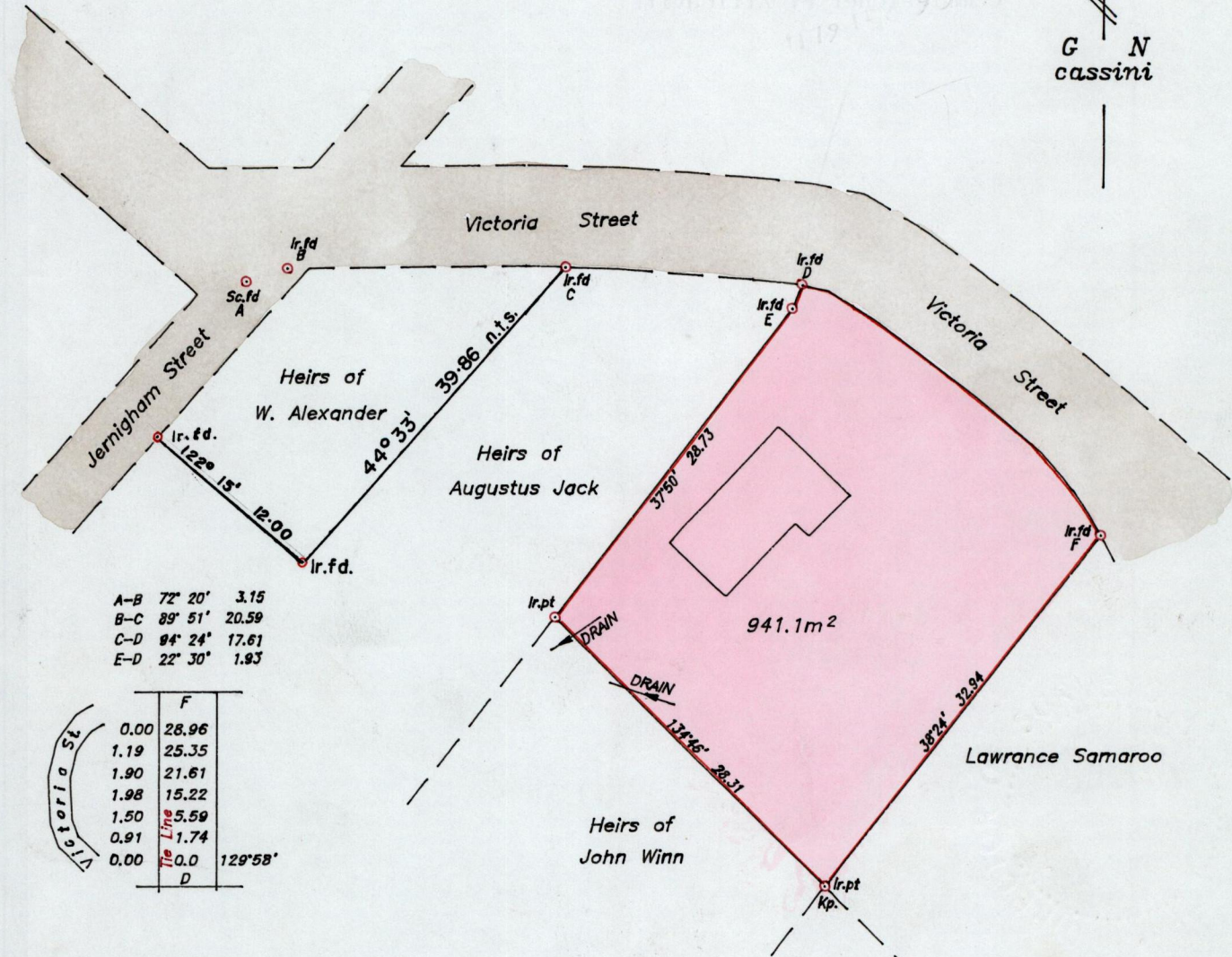
Process SD 66827

Cadastral Sheet A.20.K.  $\frac{13E}{3/c}$

To be brought under the provisions of the Real Property Ordinance.

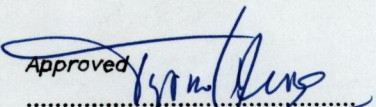
City of Port of Spain

County of St. George



A-B	72° 20'	3.15
B-C	89° 51'	20.59
C-D	94° 24'	17.61
E-D	22° 30'	1.93

	F	
0.00	28.96	
1.19	25.35	
1.90	21.61	
1.98	15.22	
1.50	5.59	
0.91	1.74	
0.00	0.0	129°58'
	D	

Approved   
 Director of Surveys  
 2005-3-21

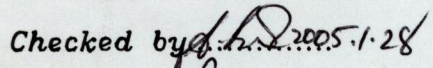
See Bk 967/167

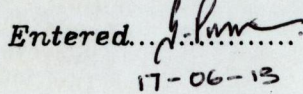
SCALE 1/500

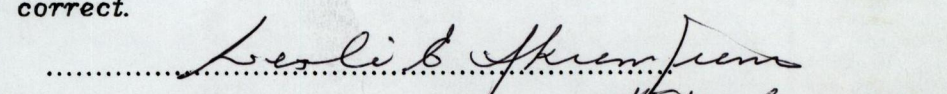
Note: To obtain compass bearings subtract 1 minutes.

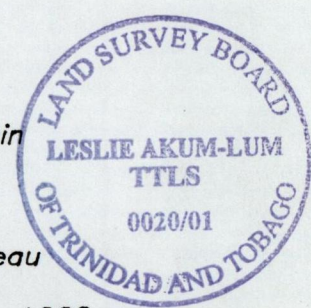
Distances are in metres

PLAN of a Parcel of land coloured Pink in the City of Port of Spain  
 Containing nine hundred and forty one point one square metres  
 Surveyed by me with due authority on 17th July 2001 for Lenore Preau  
 In accordance with reg. 25 (1) of the Land Surveyors' Regulations 1998,  
 I certify that this plan is correct.

Checked by  2005-1-28

Entered  17-06-13

  
 Trinidad & Tobago Land Surveyor 18th July 2001



"A"

This is a true copy of the survey plan marked "A"  
referred to in the prefixed affidavit of Leslie Akum Lum  
sworn to herein on the                      day of

-----  
Commissioner of Affidavits

9 AUG 2001  
Lands and  
Surveys  
Division

1292:10