

1292

64

Process ~~D#~~ 66808

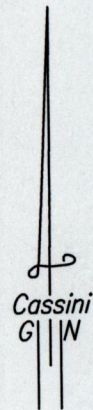
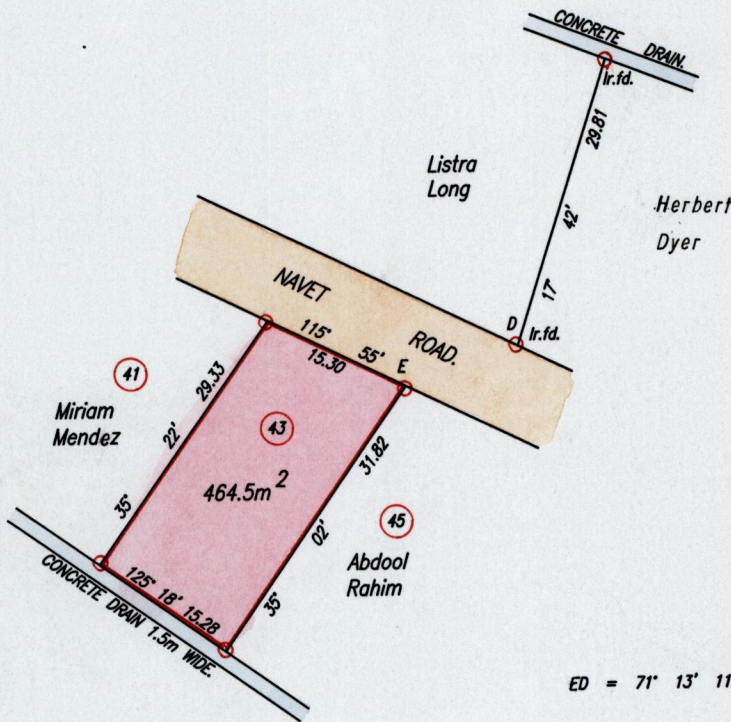
To be brought under the Provisions of the
Real Property Ordinance

City of San Fernando

County of Victoria

Cadastral Sheet G.3.J 53F
N/W 1/c

1292/64



ED = 71° 13' 11.83

1532:11

1264:66

Approved *[Signature]*
 Director of Surveys
 2005-3-14

SCALE 1:750
 Distances are in Metres

○ Denotes Iron put except otherwise stated.
 Bearings are based on Solar Observations

PLAN of a Parcel of land coloured pink in the City of San Fernando
 Containing four hundred and sixty four point five square metres.
 Surveyed by me, with due authority, on 28th April, 2000 for Herbert Dyer.
 In accordance with Regulation 25(1) of the Land Surveyors' Regulations 1998,
 I certify that this plan is correct.

Checked by *[Signature]* 21/9/04

Entered on Trinidad & Tobago Land Surveyor *[Signature]* 10th May 2002
 PATH = EV700 C:\Joseph\Dyer.dwg.

10

04

1705



16 JUL 2002
Lands and
Surveys
Division

1292/64