

1292/63

63

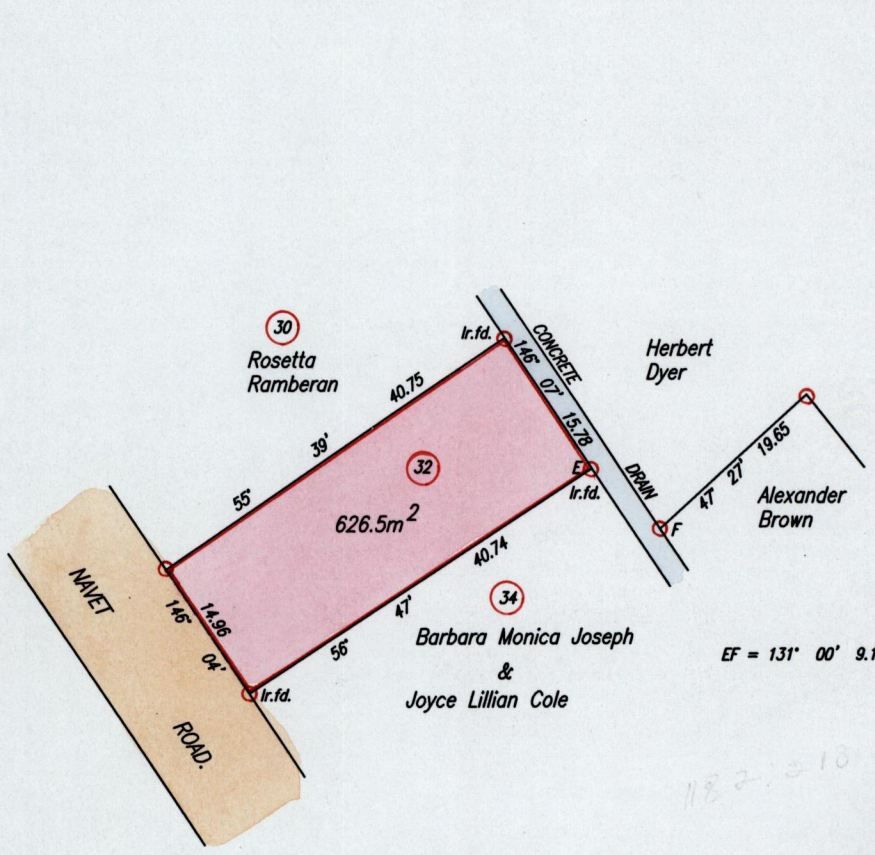
Process ID #66807

To be brought under the Provisions of the
Real Property Ordinance

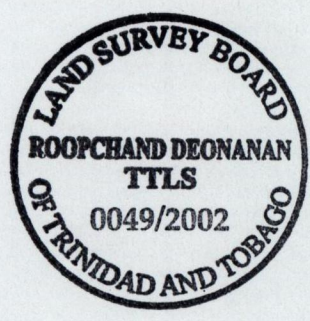
City of San Fernando

County of Victoria

Cadastral Sheet G.3.J 53F
N/W 1/c/13



Cassini
G I N



Approved *[Signature]*
Director of Surveys
2005-3-14

○ Denotes Iron put except otherwise stated.
Bearings are based on Solar Observations

SCALE 1:750
Distances are in Metres

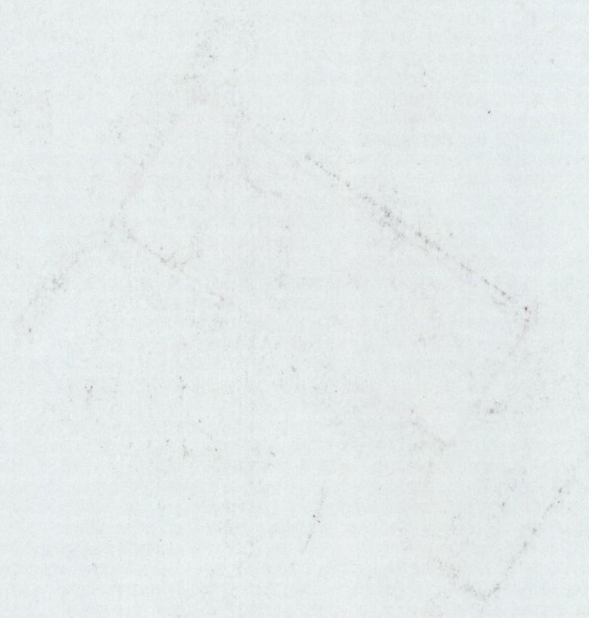
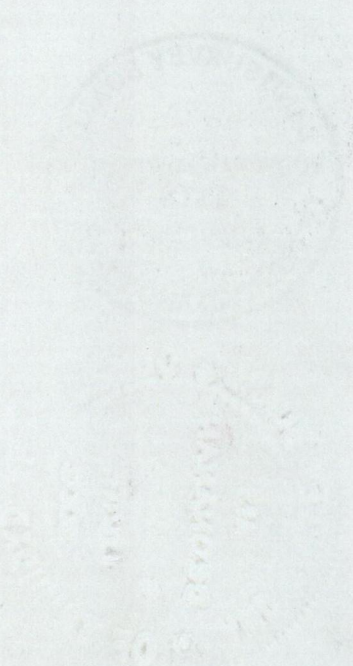
PLAN of a Parcel of land coloured pink in the City of San Fernando
Containing six hundred and twenty six point five square metres.
Surveyed by me, with due authority, on 27th April, 2000 for Herbert Dyer.
In accordance with Regulation 25(1) of the Land Surveyors' Regulations 1998,
I certify that this plan is correct.

Checked by *[Signature]* M.M. 21/9/04

Entered on Trinidad & Tobago Land Surveyor 10th May 2002
PATH = E:\700 C:\Joseph\ASnaggs.dwg

80

SES



16 JUL 2002
Lands and
Surveys
Division

1292/63