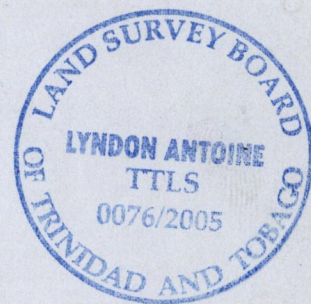
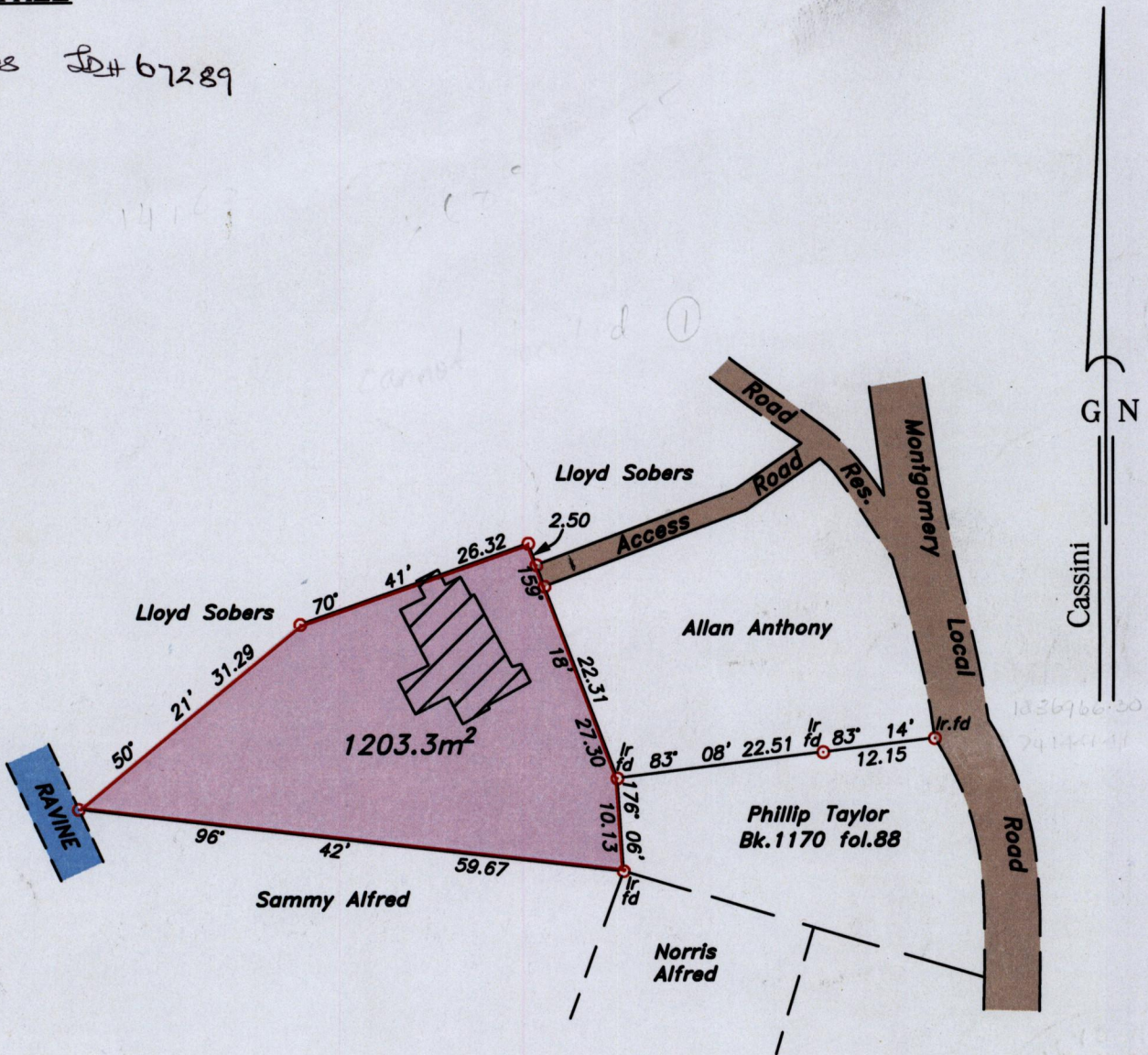


To be brought under the provisions of the REAL PROPERTY ORDINANCE

Cadastral Sheet I.16.L. 1F/5/a Ward of Tobago Parish of St. Patrick

U.P.R.N..... BETHEL

Process ID# 67289



Approved *[Signature]*
 Director of Surveys
 2006-12-09

See BK.1517 fol.131

Denotes iron put, except otherwise stated.

SCALE 1:750

Bearings are grid based on solar observations

Distances are in metres

PLAN of a parcel of land coloured pink in the Ward of Tobago
 Containing one thousand two hundred and three point three square metes.
 Surveyed by me, with due authority on 23rd September 2005 for Stephen Melville.
 In accordance with Regulation 25 (1) of the Land Surveyors' Regulations 1998, I certify that this plan is correct.

Checked by *[Signature]* 27/11/06
 Entered

[Signature]
 5th October

K. A. Ubell Trinidad & Tobago Land Surveyor.....2005.
 Path: \\Main\R\M160\SMELVILLE.DWG