

To be brought under the provisions of the Real Property Ordinance

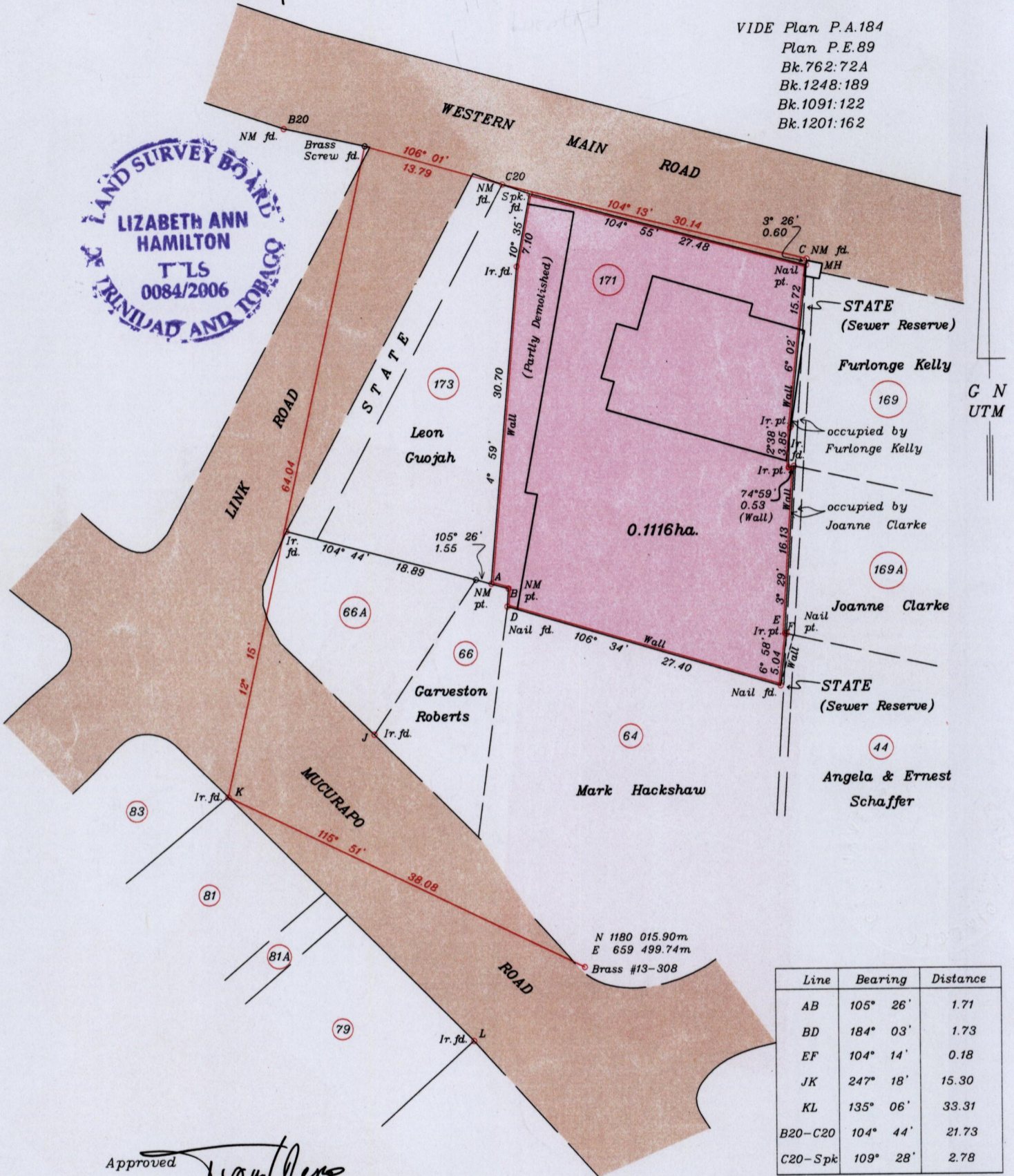
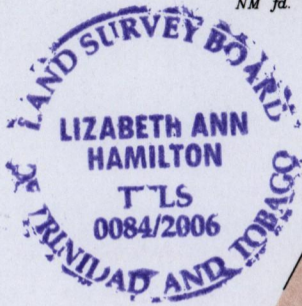
City of Port of Spain

County of St. George

Cadastral Sheet A.20.E., 13D / 3/6

Process ID# 67287

VIDE Plan P.A.184
Plan P.E.89
Bk.762:72A
Bk.1248:189
Bk.1091:122
Bk.1201:162



Line	Bearing	Distance
AB	105° 26'	1.71
BD	184° 03'	1.73
EF	104° 14'	0.18
JK	247° 18'	15.30
KL	135° 06'	33.31
B20-C20	104° 44'	21.73
C20-Spk	109° 28'	2.78

Approved *[Signature]*
Director of Surveys
2006-12-07

SCALE 1:500

Bearings are U.T.M. Grid based on Solar Observations

Distances are in metres

PLAN of a Parcel of land coloured pink in the City of Port of Spain

Containing zero point one one one six hectares

Surveyed by me, with due authority, on January 28, 2006 for Amina Baksh, Afrose Emamali and Izatoon Nisha Baksh

In accordance with Regulation 25(1) of the Land Surveyors' Regulations 1998

I certify that this plan is correct.

Ckd by *[Signature]* 2006-11-10

Lizabell An Hamilton
Trinidad & Tobago Land Surveyor March 10 2006

[Signature] 17-06-13