

129220

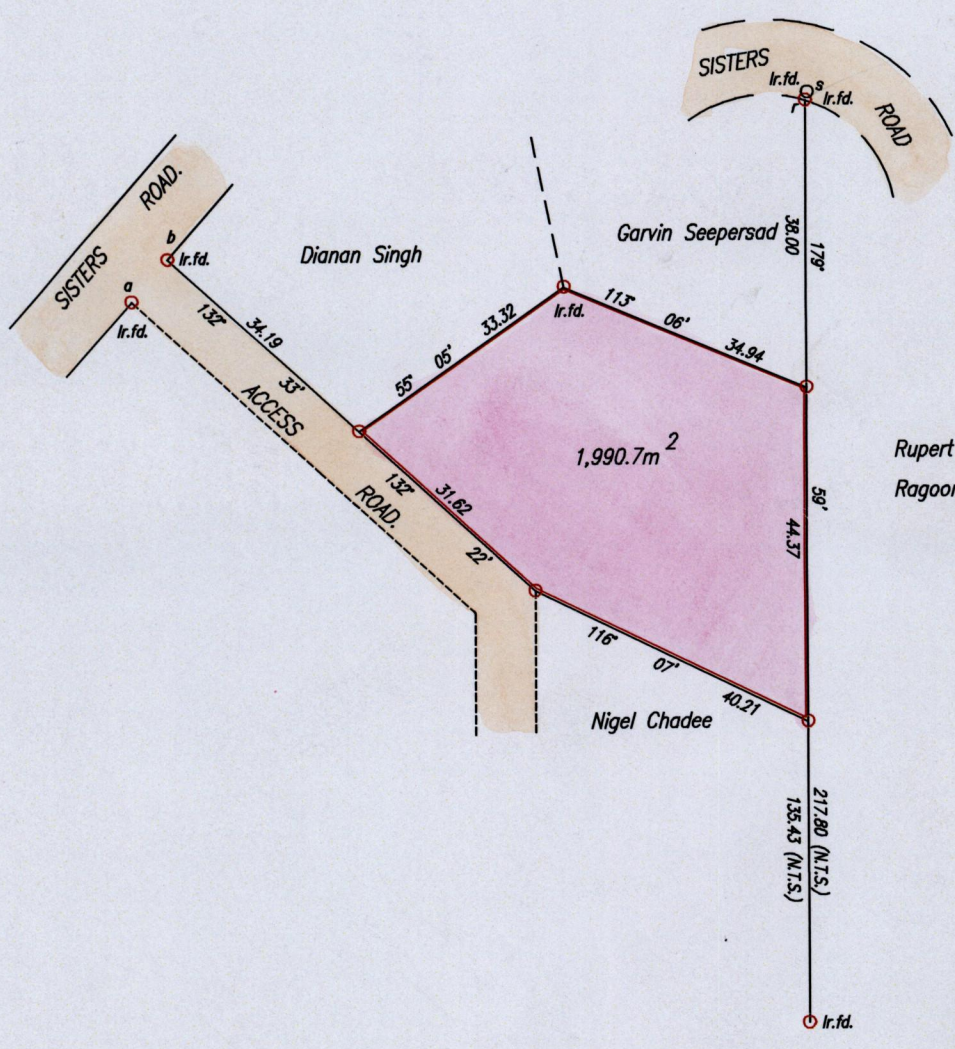
220

To be brought under the Provisions of the  
Real Property Ordinance  
Vide Bk. 1220 fol. 170

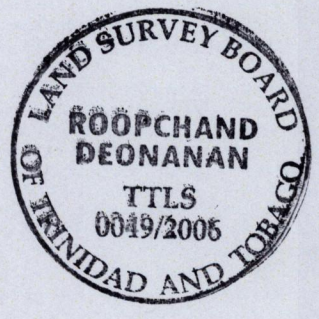
Cadastral Sheet D.23.L. 54B  
3/a  
Ward of Savana Grande.  
County of Victoria.

Process ~~67281~~ 67281

③  
Located



ab = 41° 26' 7.49  
rs = 13° 40' 1.15



Approved *[Signature]*  
Director of Surveys.  
2006.12.04

S - E. 680690  
N. 1141286

SCALE 1:1000  
Distances are in Metres

○ Denotes Iron put except otherwise stated.

Bearings are Cassini Grid based on Solar Observations.

Plan of a Parcel of land coloured pink in the Ward of Savana Grande

Containing one thousand, nine hundred and ninety point seven square metres.

Surveyed by me, with due authority, on 27th. February, 1998 and 19th. May, 2006 for Prakash Seepersad

In accordance with Regulation 25(1) of the Land Surveyors' Regulations 1998,

I certify that this plan is correct.

Checked by *[Signature]*

*[Signature]*

Entered on *[Signature]*

Trinidad & Tobago Land Surveyor 2<sup>nd</sup> June 2006

PATH = E:\700 C:\Drawings\05\PSseepersad.dwg