

1292

194

Process ID# 67443

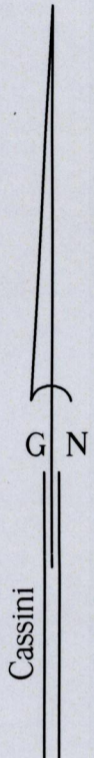
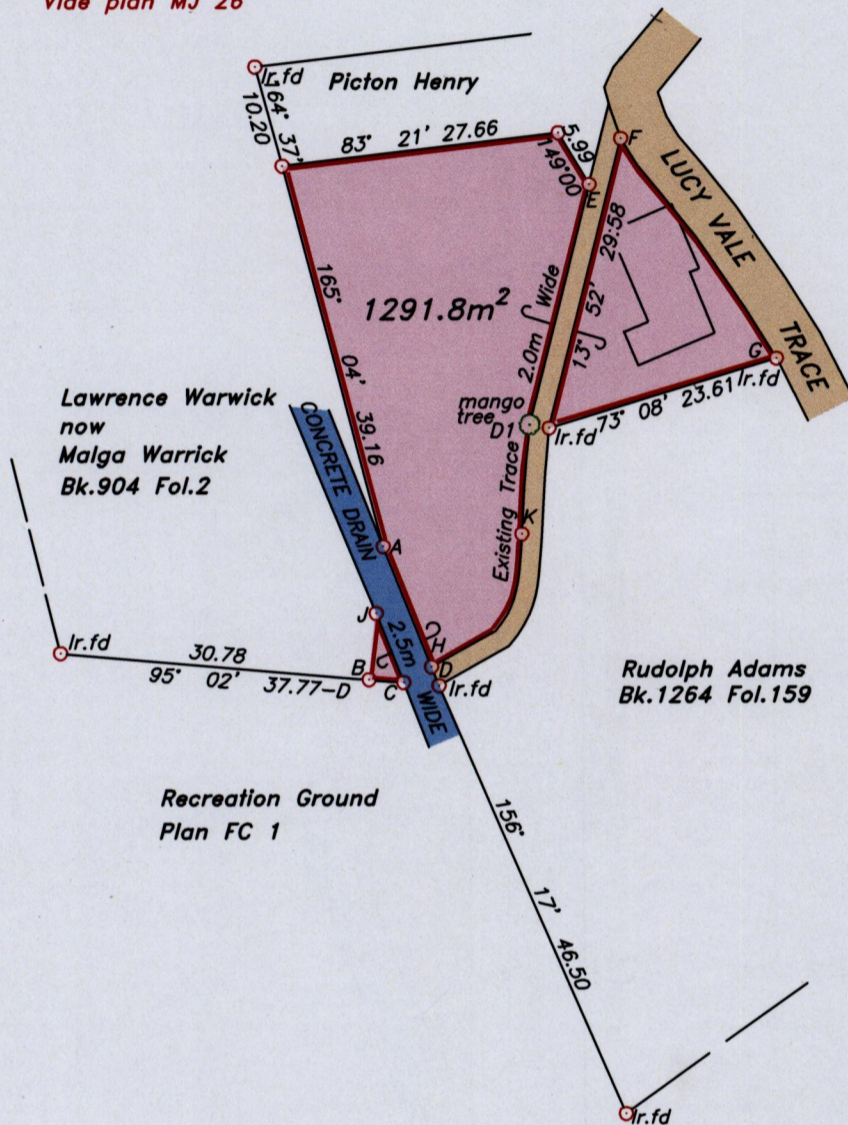
To be brought under the provisions of the REAL PROPERTY ORDINANCE

U.P.R.N.....

SPEYSIDE (Lucy Vale)

Cadastral Sheet I.10.L 3E
Ward of Tobago 6D
Parish of St. John

Vide plan MJ 26



LEGEND

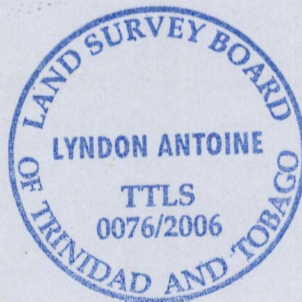
LINE	DIRECTION	DISTANCE
B-C	95° 02'	3.46
C-D	95° 02'	3.53
E-F	34° 43'	5.52
F-G	144° 39'	26.81
D1-E	13° 52'	24.61
H-D1	22° 01'	26.00
A-J	185° 58'	6.73
J-B	185° 58'	6.68
J-C	158° 25'	7.48
C-H	60° 46'	3.18
A-H	158° 15'	13.02
H-K	34° 03'	16.06

See 1264:159

SCALE 1:750

Approved

Lyndon Antoine
 Director of Surveys
 2006-6-26



○ Denotes iron put, except otherwise stated.

Bearings are grid based on solar observations

Distances are in metres

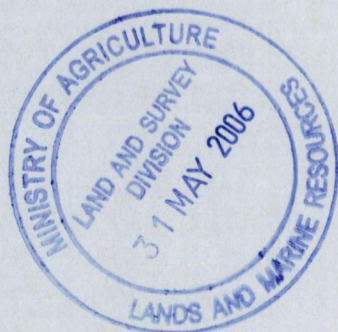
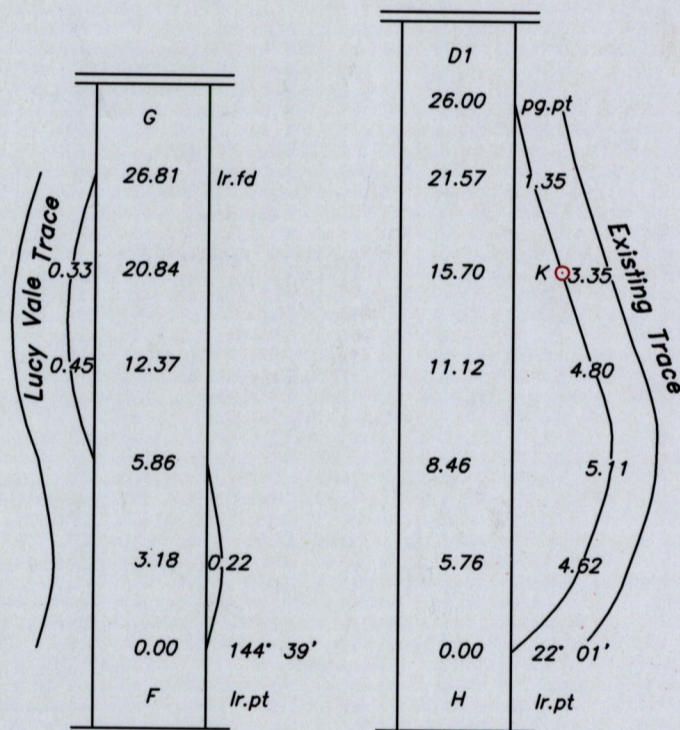
PLAN of a parcel of land coloured pink in the Ward of Tobago
 Containing one thousand two hundred and ninety one point eight square metres.
 Surveyed by me, with due authority on 21st February 2005 for Caroline Alexander &
 Scott Warrick & Chylin Sylvester

In accordance with Regulation 25 (1) of the Land Surveyors' Regulations 1998, I certify that this plan is correct.

Checked by *14.6.06*

Entered

K. AUBERT Trinidad & Tobago Land Surveyor.....*Lyndon Antoine*.....2006.
 20-6-2013 PATH \\Main\05SURVEY\A128\calexander.dwg



1292/194