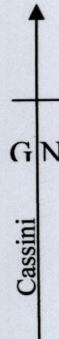


1292

175

Process ID# 67315

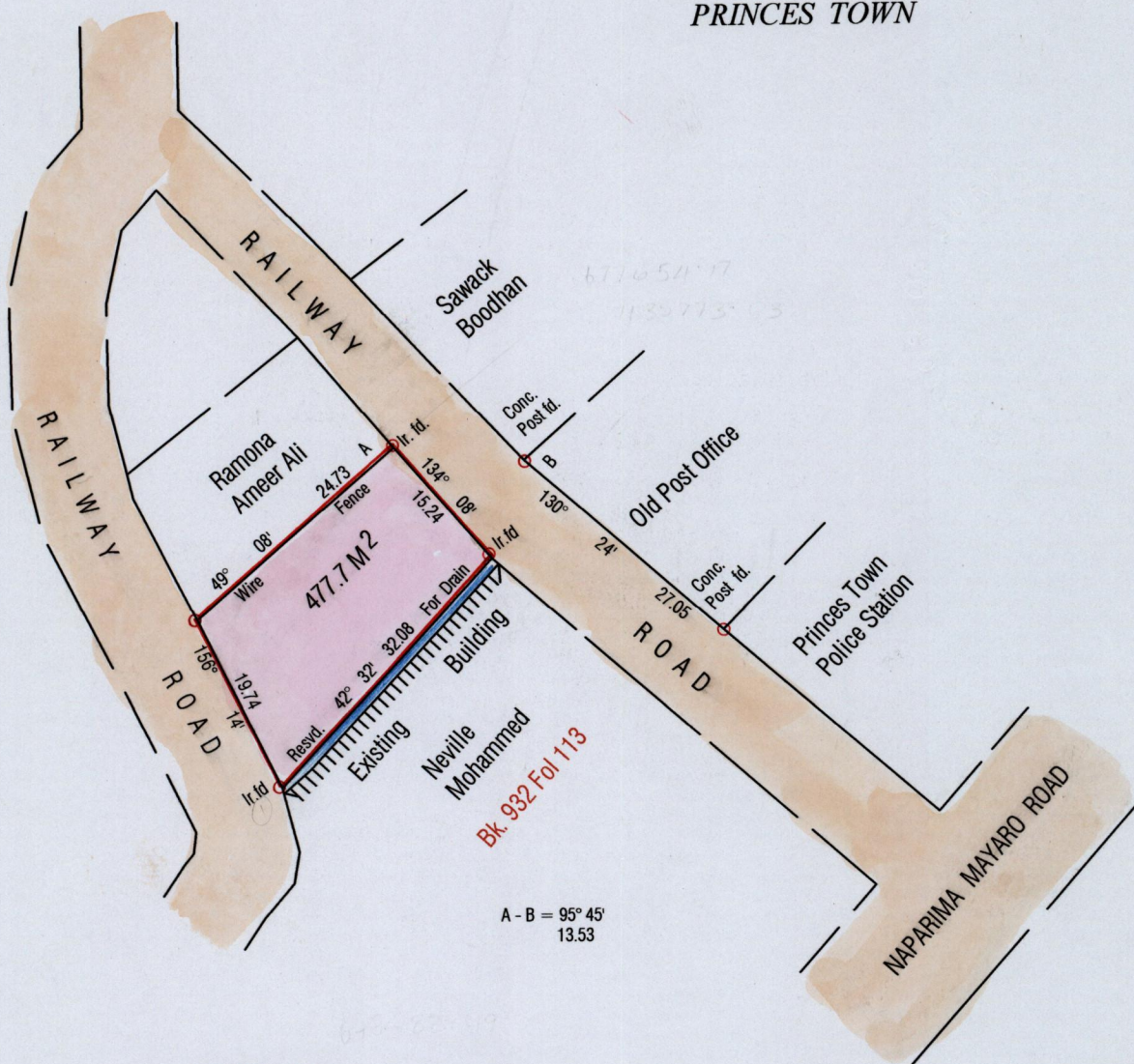
Ward of Savana Grande
County of Victoria
Cadastral Sheet G 4 J 54 D
4/a



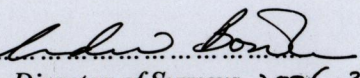
To be brought under the Provisions of the
REAL PROPERTY ORDINANCE

R.D # 5708 / 2000

PRINCES TOWN



A- 677794.24
1135956.92
243 84.

Approved 
Director of Surveys 2006.3.28

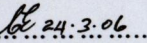


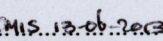
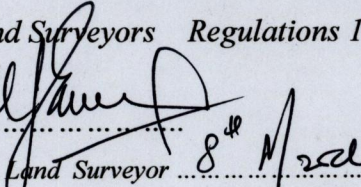
- Denotes iron put except otherwise stated
Bearings are Cassini Grid based on Solar Obs.

SCALE 1:750

Note: To obtain compass bearings add/subtract minutes Distances are in metres

PLAN of a Parcel of land coloured pink in the Ward of Savana Grande
Containing four hundred and seventy seven point seven square metres
Surveyed by me, with due authority, on 27th February 2005 For G. Boxill & S. Ryan
In accordance with Regulation 25 (1) of the Land Surveyors Regulations 1998 I certify
that this plan is correct

Checked by  24.3.06

Entered on  24.3.06 Trinidad and Tobago Land Surveyor  8th March 2005