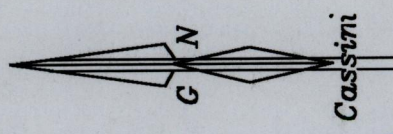
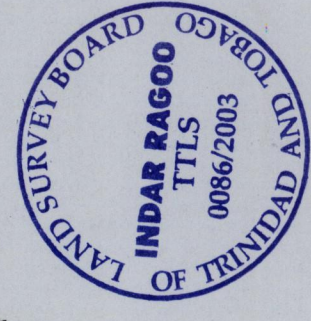
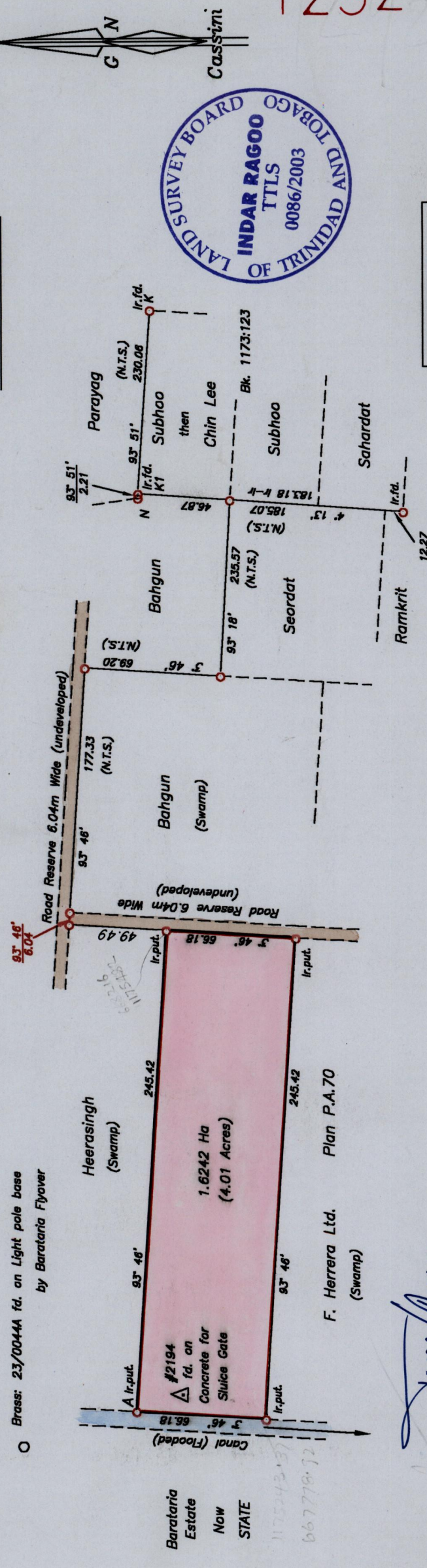


Cadastral Sheet B.22.A 23B  
 Ward of St. Anns 2/d  
 County of St. George

Lower El Socorro

To be brought under the provisions of the Real Property Ordinance

Process #66662



Vide Plan B.C.13

Station	Eastings	Northings
△ #2194	667 790.08	1175 281.58
Brass: 23/00444		
△ #2194	667 364.10	1176 672.14
Station	Bearing	Distance
△ #2194	342° 58'	1454.34 (N.T.S.)
△ #2194	340° 22'	25.18
		Station Brass: 23/00444
		A

SCALE 1/2500  
 Distances are in metres

Approved .....  
 Director of Surveys

2005-12-07

○ Denotes No.mk.fd.  
 Bearings are Cassini Grid based on Solar Observations  
 PLAN of a Parcel of land coloured pink in the Ward of St. Anns  
 Containing one point six two four two hectares.

Surveyed by me with due authority on 5th April 2002 for Shobhupati Singh-Ramchand.  
 In accordance with Regulation 25 (1) of the Land Surveyors' Regulations 1998,  
 I certify that this plan is correct.

Checked By: zm 13/07/04

Entered On: .....  
 13/07/04

Indar Ragoo

Trinidad & Tobago Land Surveyor 11th November 2003

1292

132