

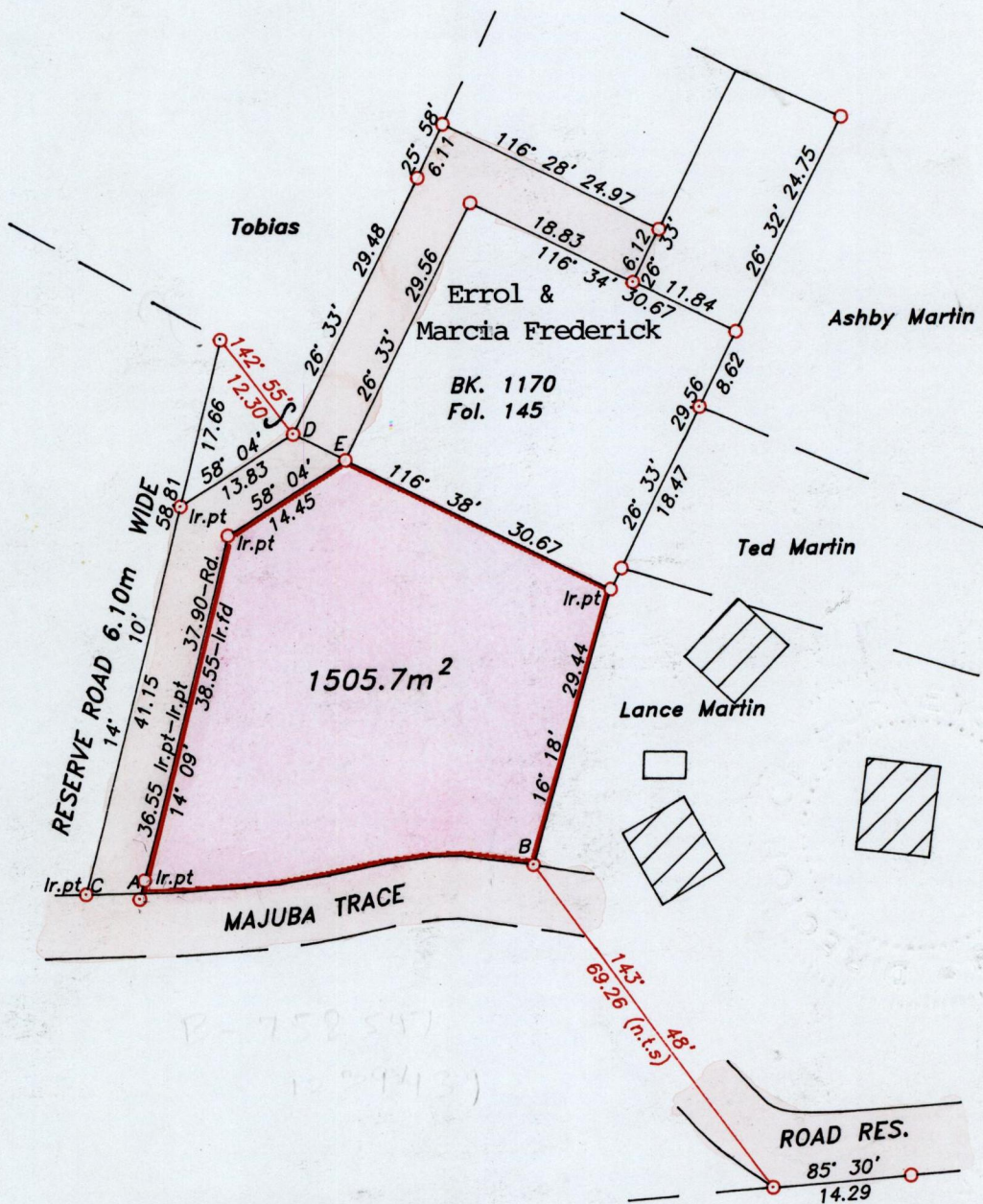
Process ~~LDH~~ 66933

To be brought under the provisions of the REAL PROPERTY ORDINANCE

Cadastral Sheet L19.E
Ward of Tobago
Parish of St. Mary

2J
2C

2J
2C



G N
Cassini

LINE	DIRECTION	DISTANCE
C-A	77° 19'	6.21
A-B	88° 26'	40.35
D-E	116° 38'	6.08

Jason Mc Eachnie
Bk. 1231 Fol. 143

Approved

[Signature]
 Director of Surveys
 2004.10.11

○ Denotes iron found, except otherwise stated.

Bearings are grid based on solar observations

Distances are in metres



SCALE 1:750

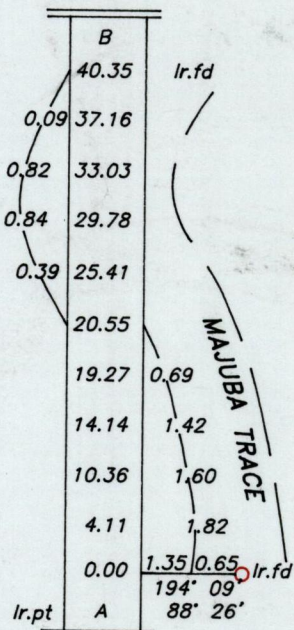
PLAN of a parcel of land coloured pink in the Ward of Tobago
 Containing one thousand five hundred and five point seven square metres.
 Surveyed by me, with due authority on 1st November 2001 for McCarty Lynch
 In accordance with Regulation 25 (1) of the Land Surveyors' Regulations 1998, I certify that this
 plan is correct.

Checked by *[Signature]*
Entered

[Signature]
 22nd November 2002

K.A. Bell, Trinidad & Tobago Land Surveyor 2002

path:01SURVEY\LO55\MLYNCH.DWG



-5 JUN 2003
Lands and
Surveys
Division

1292/12