

U.P.R.N .....  
 To be brought under the provisions  
 of the REAL PROPERTY ORDINANCE

Vide Plan in Bk. 955 Fol. 116

Process 66930

George Hugh Campbell

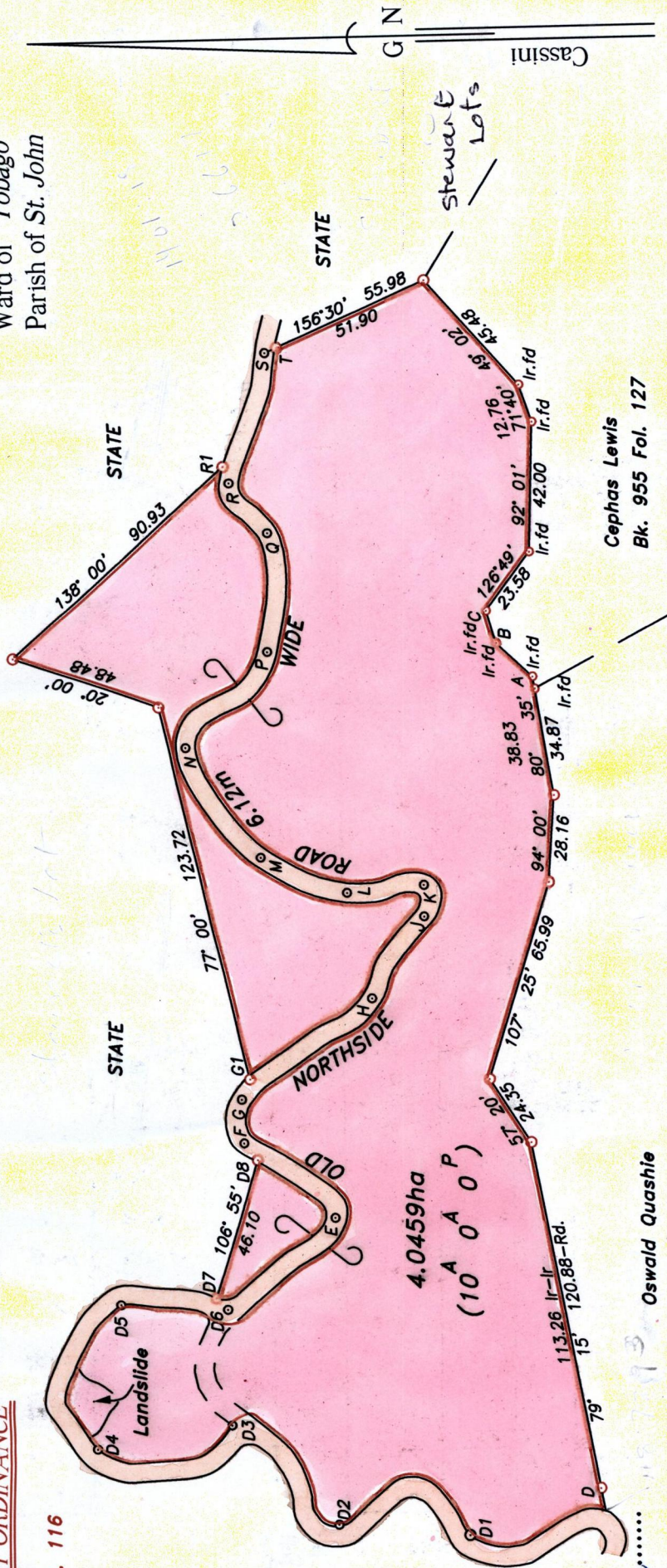
Approved *[Signature]*  
 Director of Surveys  
 2002.9.16

○ Denotes iron put, except otherwise stated.  
 ○ Denotes peg put.  
 Bearings are grid based on solar observations

PLAN of a parcel of land coloured pink in the Ward of Tobago  
 Containing four point zero four five nine hectares.  
 Surveyed by me, with due authority on 1st April 2003 for Otman Drysdale & Others  
 In accordance with Regulation 25 (1) of the Land Surveyors' Regulations 1998, I certify that this  
 plan is correct.

Checked by *[Signature]*  
 Entered, .....  
*[Signature]* 12<sup>th</sup> July  
 K.M.B.A. Trinidad & Tobago Land Surveyor.  
 path: \\Main\03SURVEY\0668\otdrysdale.dwg  
 .....2004.  
 26-9-2013

Cadastral Sheet 1.9.E. 20/1d  
 Ward of Tobago  
 Parish of St. John



Cephas Lewis  
 Bk. 955 Fol. 127

SCALE 1:2000

Distances are in metres

LINE	AZIMUTH	DISTANCE
F-G	87° 53'	14.12
G-H	142° 48'	52.98
H-J	123° 23'	31.05
J-K	90° 20'	10.11
K-L	355° 13'	24.79
L-M	23° 19'	29.94
M-N	56° 31'	43.16
N-P	131° 28'	40.52
P-Q	90° 56'	38.46
Q-R	53° 40'	20.39
R-S	106° 11'	43.56
R-R1	71° 02'	5.73

LINE	AZIMUTH	DISTANCE
A-B	43° 15'	15.89
D-D1	340° 55'	44.55
D1-D2	05° 23'	42.07
D2-D3	43° 31'	46.74
D3-D4	350° 32'	43.44
D4-D5	99° 21'	47.13
D5-D6	183° 16'	34.13
D6-D7	47° 37'	5.23
D6-E	140° 02'	45.30
E-F	39° 54'	37.94
G-G1	112° 18'	7.05
B-C	73° 54'	10.88
D8-G1	85° 21'	26.18

11/2621

