

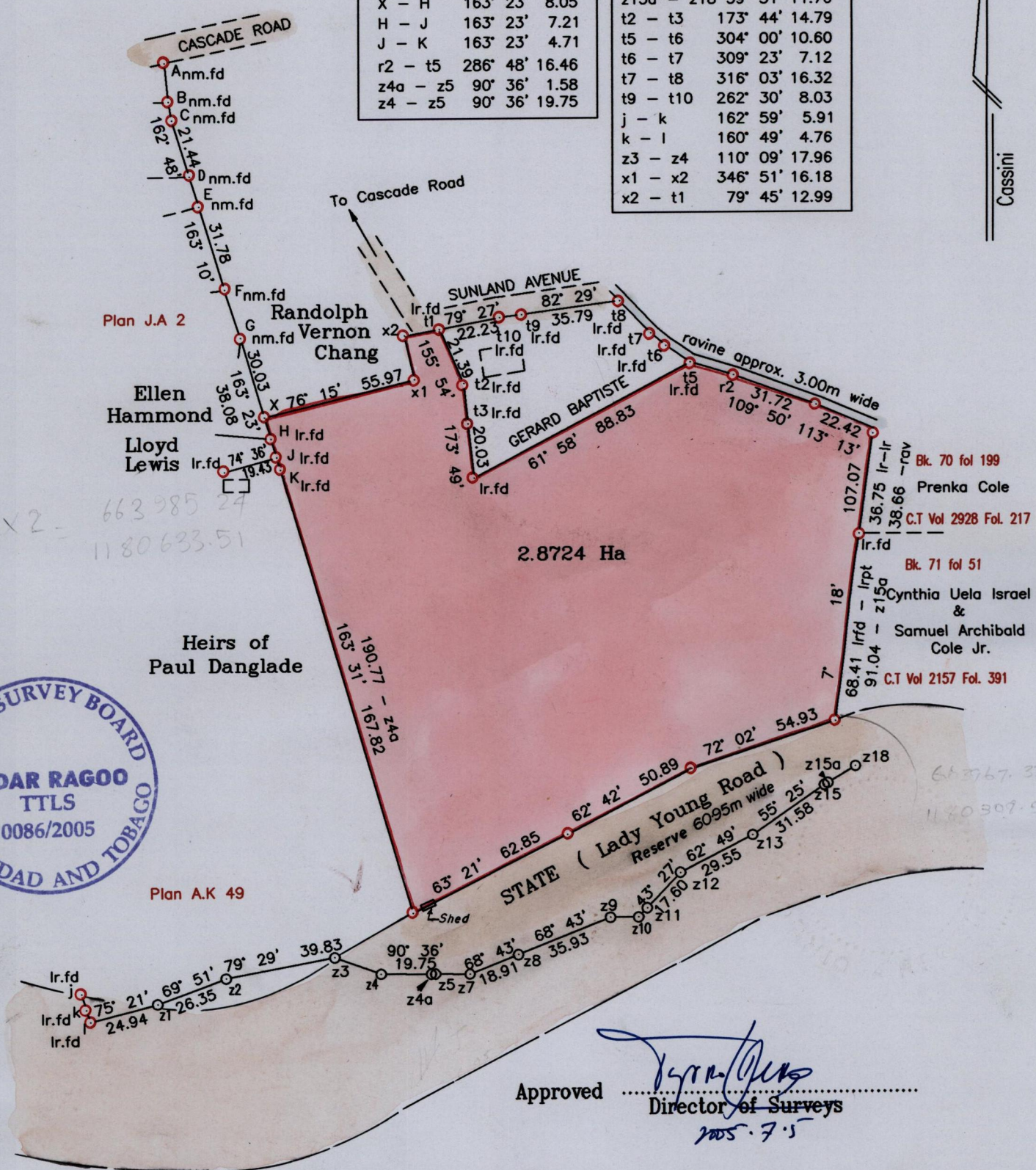
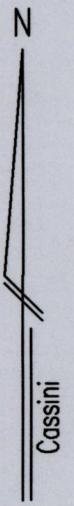
Process ID #66804

U.P.R.N. No.

To Be Brought Under The Provisions Of the Real Property Ordinance

LINE	BEARING	DIST.
A - B	174° 43'	14.10
B - C	169° 40'	6.83
D - E	163° 20'	11.46
F - G	161° 51'	18.29
X - H	163° 23'	8.05
H - J	163° 23'	7.21
J - K	163° 23'	4.71
r2 - t5	286° 48'	16.46
z4a - z5	90° 36'	1.58
z4 - z5	90° 36'	19.75

LINE	BEARING	DIST.
z5 - z7	90° 36'	12.47
z9 - z10	90° 02'	10.26
z10 - z11	43° 27'	4.53
z15 - z15a	59° 31'	1.56
z15a - z18	59° 31'	11.70
t2 - t3	173° 44'	14.79
t5 - t6	304° 00'	10.60
t6 - t7	309° 23'	7.12
t7 - t8	316° 03'	16.32
t9 - t10	262° 30'	8.03
j - k	162° 59'	5.91
k - l	160° 49'	4.76
z3 - z4	110° 09'	17.96
x1 - x2	346° 51'	16.18
x2 - t1	79° 45'	12.99



Approved *[Signature]*
 Director of Surveys
 2005.7.5

Bearings are Cassini Grid based on Solar Obs.

SCALE 1:2000

○ Denotes Iron Put unless otherwise stated

Distances are in Metres

Plan of a Parcel of land coloured pink in the Ward of St. Anns

Containing two point eight seven two four hectares

Surveyed by me, with due authority, in 13th June, 31st July, 8th, 17th & 22nd August,

6th September 2001 & 10th May 2005 for Richard Nottingham

In accordance with Regulation 25(1) of the Land Surveyors' Regulations 1998, I certify that this plan is correct.

Checked by *MM. 20/6/05*

Sndc. Rago

Entered on *[Signature]* 23-07-13

Trinidad & Tobago Land Surveyor *27th/May 2005*