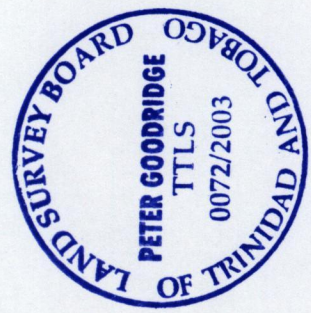
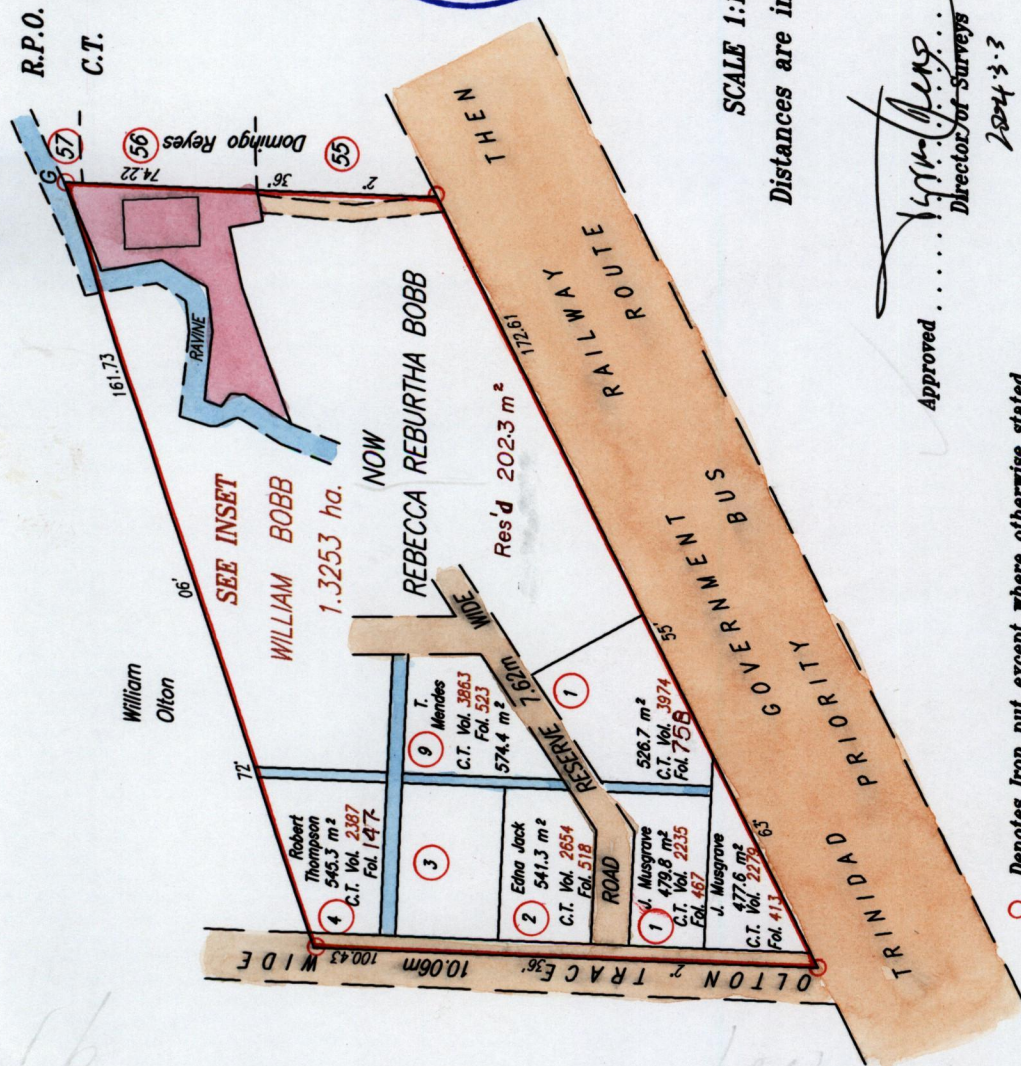


See Bk. 1233 Fol. 194



SCALE 1:1500
Distances are in METRES

Approved
Director of Surveys
2004-3-3

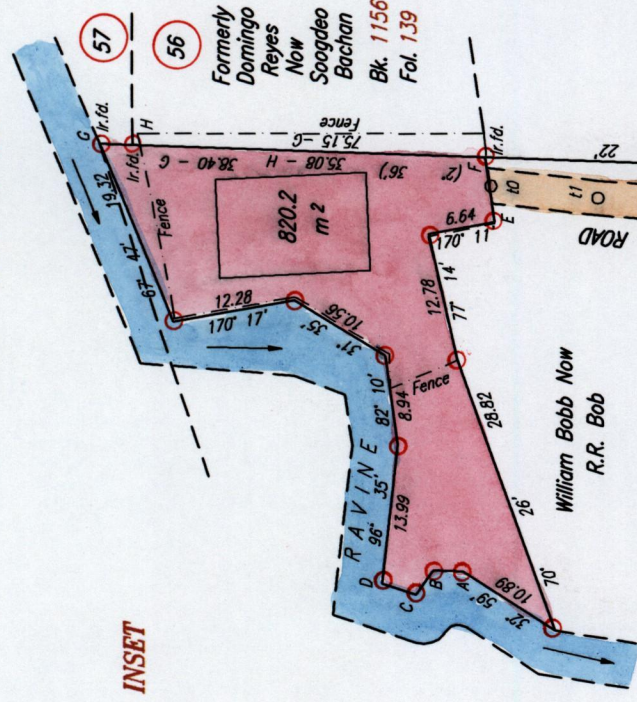
- Denotes Iron put except where otherwise stated
- Bearings are Cassini Grid based on Solar Observations
- PLAN of a Parcel of land coloured pink in the Borough of Arima
- Containing eight hundred and twenty point two square metres
- Surveyed by me, with due authority, in February 1999

In accordance with Regulation 25 (1) of The Land Surveyors' Regulations 1998,

I certify that this plan is correct.

Checked by TTLS
Entered on
10th June 2003
Trinidad & Tobago Land Surveyor

See Bk. 1233 Fol. 194



LEGEND

A - B	2' 24'	3.00
B - C	305' 04'	2.98
C - D	19' 02'	3.58
E - F	81' 45'	6.61
B1 - 10	357' 47'	36.15
10 - 11	186' 54'	10.74
11 - 12	185' 04'	7.86
12 - 13	166' 18'	23.58
13 - 14	64' 49'	20.31
14 - 15	149' 12'	6.93
15 - 16	157' 14'	12.76
16 - 17	149' 23'	11.48

SCALE 1:750
Distances are in METRES

1289

91