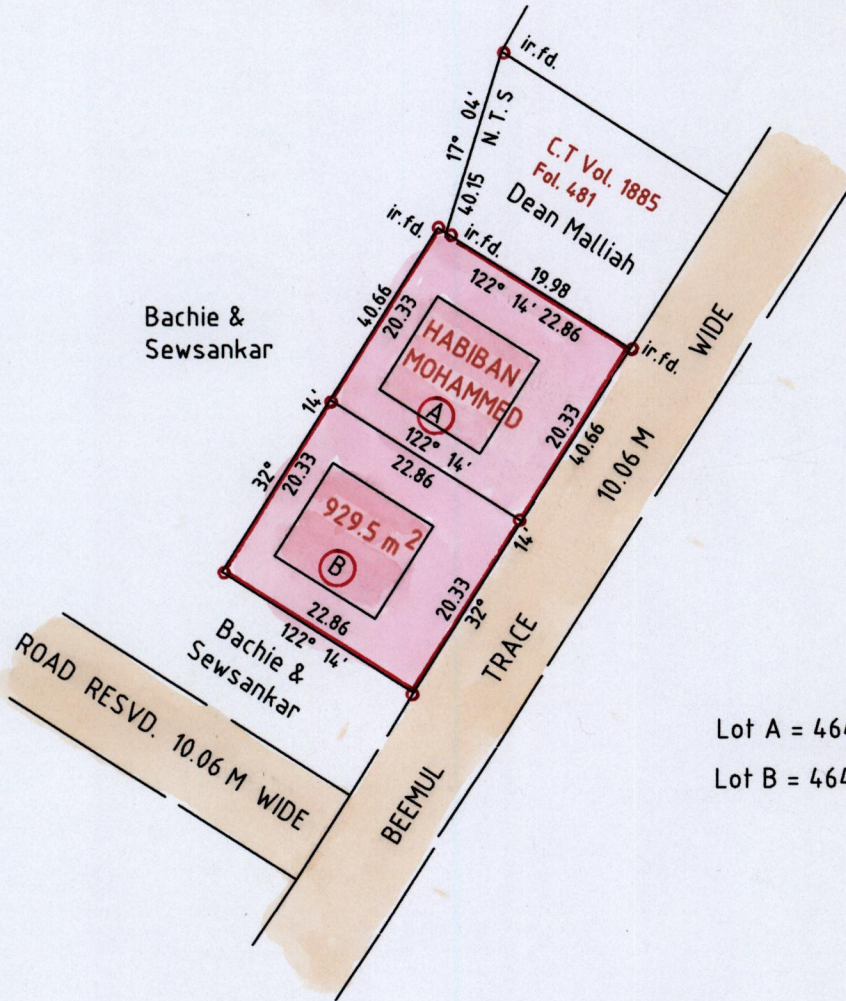


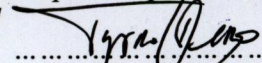
Bk. 997 Fol. 57



Lot A = 464.7 m<sup>2</sup>

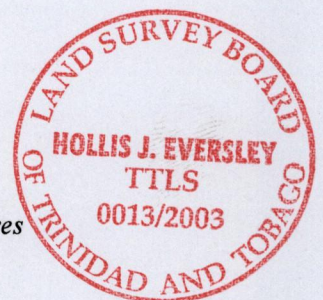
Lot B = 464.7 m<sup>2</sup>

- Bearings are Cassini Grid based on Solar obs.
- Denotes iron put except otherwise stated

Approved   
 Director of Surveys 2002.3.3

Note: To obtain compass bearings add/subtract minutes

Scale 1: 750  
Distances are in metres

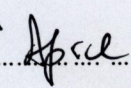


PLAN of 2 Parcels of land coloured pink in the Ward of Siparia  
Containing nine hundred and twenty nine point four square metres

Surveyed by me, with due authority, in October 2002

In accordance with Regulation 25 (1) of the Land Surveyors' Regulations 1998 I  
certify that this plan is correct.

Checked by  22.3.04

Entered ..... Trinidad and Tobago Land Surveyor .....  ..... 2003