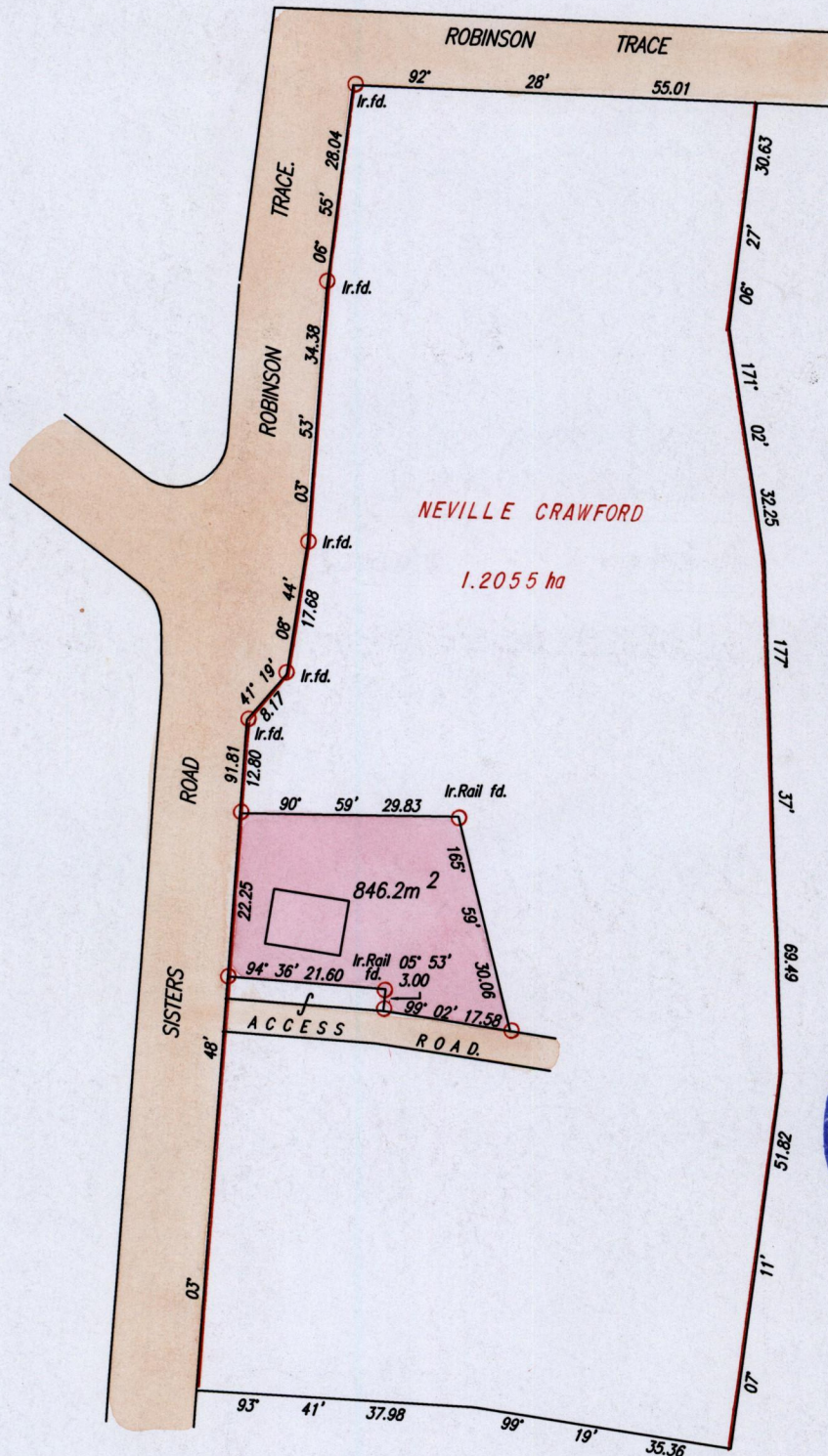


R.P.O. Vol. Fol.
C.T.Vol. 3178 Fol. 383
Bk.1149 fol.22

Cadastral Sheet D.23.K. 54A
4/b
Ward of Savana Grande.
County of Victoria.



Cassini
G | W



Heirs
of
Webb

Heirs of Webb

Approved *[Signature]*
Director of Surveys
2004-3-3

SCALE 1:1000
Distances are in Metres

○ Denotes Iron put except otherwise stated.
Bearings are based on Solar Observations

PLAN of a Parcel of land coloured pink in the Ward of Savana Grande.
Containing eight hundred and forty six point two square metres.
Surveyed by me, with due authority, in February, 2003

In accordance with Regulation 25(1) of the Land Surveyors' Regulations 1998,
I certify that this plan is correct.

Checked by *M.M. 13/2/04* *Winston Ramcharan*

Entered on..... Trinidad & Tobago Land Surveyor *29th October* . . . 2003