

1289

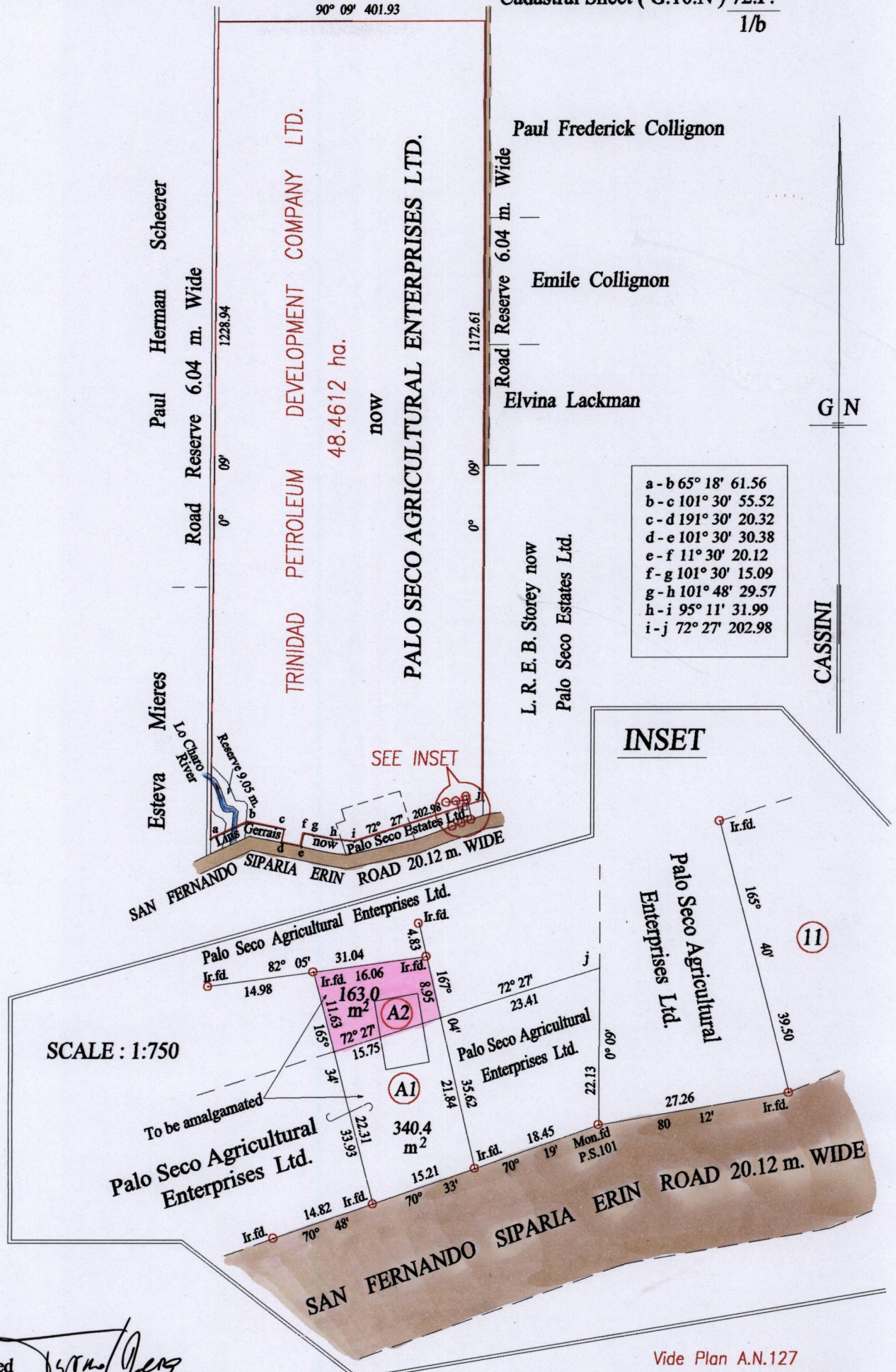
64

R.P.O. Vol. 106 Fol. 201
C.T. Vol. 648 Fol. 289

Gustave Prinz

Ward of Erin
County of St. Patrick
Cadastral Sheet (G.16.N) 72.F.

1/b



Approved *[Signature]*
Director of Surveys

○ Denotes Iron put except stated otherwise.
Note: Bearings are cassini grid based on solar observations
PLAN of a Parcel of land coloured pink in the Ward of Erin
Containing one hundred and sixty three point zero square metres
Surveyed by me, with due authority, in August 2002
In accordance with Regulation 25 (1) of the Land Surveyors' Regulations 1998,
I certify that this plan is correct.

Checked by *[Signature]* M.M. 2/2/04

Entered on Trinidad & Tobago Land Surveyor 26.01.2004

Vide Plan A.N.127
Bk. 441 fol. 33
Bk. 440 fol. 186
Bk. 709 fol. 159
Bk. 1008 fol. 59
Bk. 1015 fol. 86

