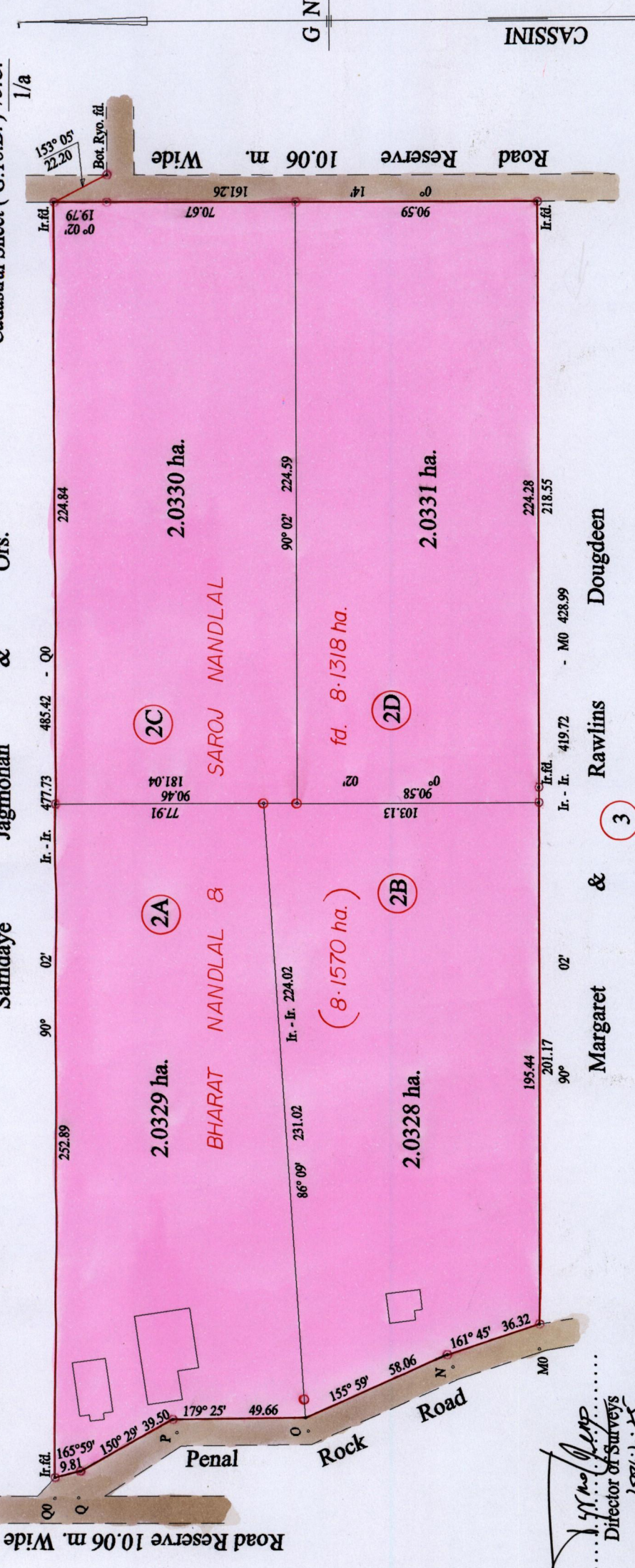


R.P.O. Vol. Fol. C.T. Vol. 2621 Fol. 505

Ward of Siparia County of St. Patrick Cadastral Sheet (G.18.B.) 73.C. 1/a

Samdaye Jagmohan & Ors.

1



Approved ..... 2004.2.25 Director of Surveys

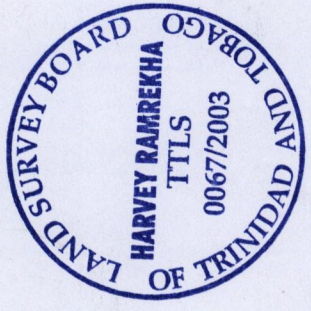
o Denotes Iron put except stated otherwise.  
 Note: Bearings are cassini grid based on solar observations  
 PLAN of 4 Parcels of land coloured pink in the Ward of Siparia  
 Containing together eight point one three one eight hectares  
 Surveyed by me, with due authority, in June 2003  
 In accordance with Regulation 25 (1) of the Land Surveyors' Regulations 1998,  
 I certify that this plan is correct.

Checked by M.M. 2/2/04

Entered on ..... Trinidad & Tobago Land Surveyor ... 2003

SCALE : 1:2000

Vide Plan D.F.73



M0 - N	348° 22'	33.05
N - O	335° 59'	59.18
O - P	359° 25'	49.21
P - Q	326° 24'	43.92
Q - Q0	358° 32'	8.85

CASSINI GN

Road Reserve 10.06 m. Wide

Road Reserve 10.06 m. Wide

153° 05' 22.20 Bot. Ryo. fd.

Ir. fd. 19.79 0° 02' 70.67 161.26 14' 0° 90.59 Ir. fd.

224.84 2.0330 ha. 90° 02' 224.59 2.0331 ha. 224.28 218.55

Ir. - Ir. 477.73 485.42 - Q0 90° 02' 181.04 90.46 77.91 SAROJ NANDLAL 2C

Ir. - Ir. 419.72 419.72 - M0 428.99 103.13 90.58 02 8.1318 ha. 2D

90° 02' 252.89 2.0329 ha. 2A BHARAT NANDLAL & 8.1570 ha. 2B

Ir. - Ir. 224.02 86° 09' 231.02 2.0328 ha. 195.44 201.17 90°

Ir. fd. 165° 59' 9.81 150° 29' 39.50 179° 25' 49.66 155° 59' 58.06 161° 45' 36.32

Penal Rock Road

Margaret & Rawlins Dougdeen