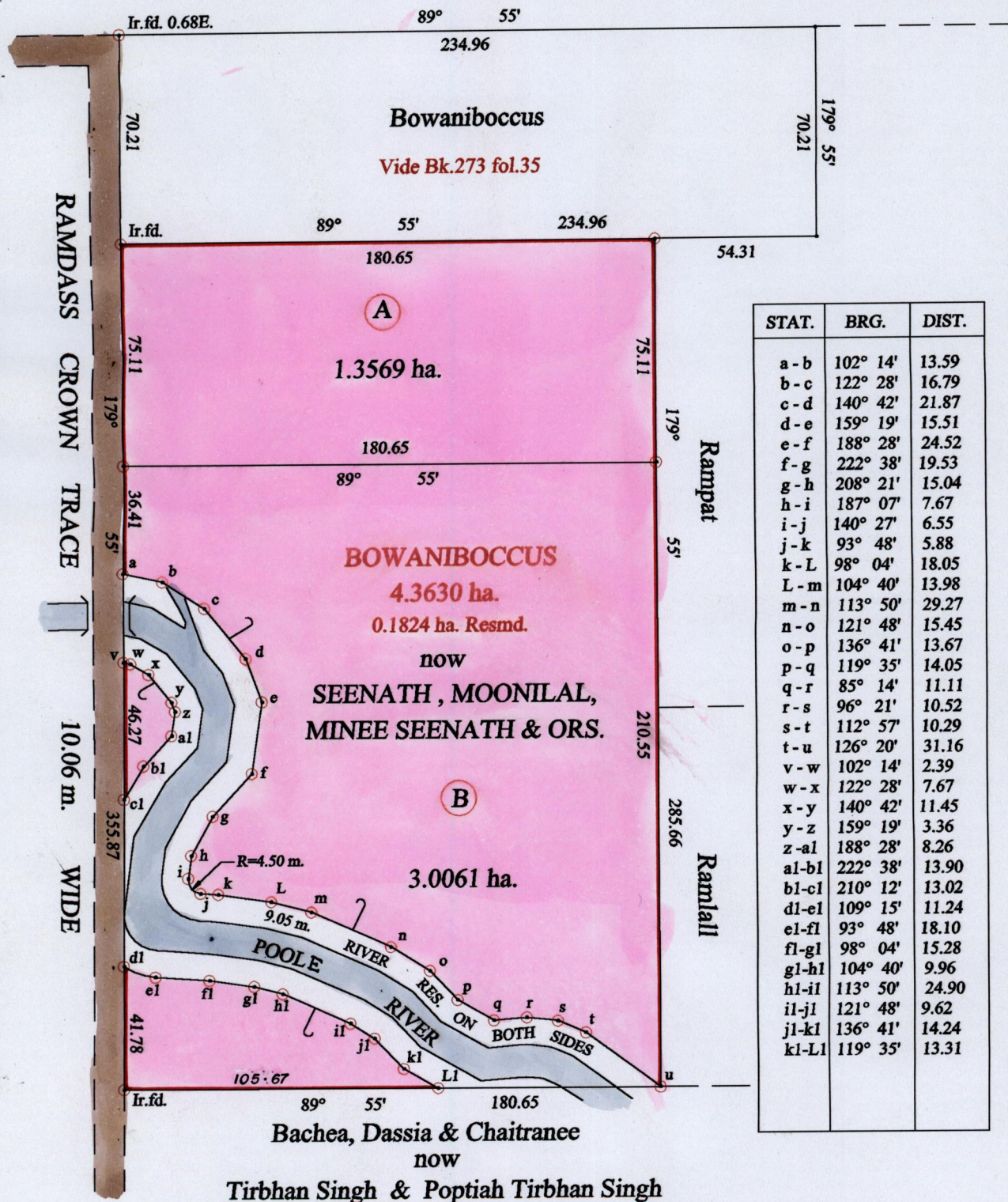


STATE
Central Range Reserve



Approved *[Signature]*
Director of Surveys

Vide Bk.272 fol.142

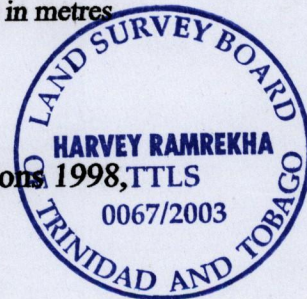
○ Denotes Iron put except stated otherwise.
Note: Bearings are cassini grid based on solar observations

SCALE : 1:2000

Distances are in metres

PLAN of 2 Parcels of land coloured pink in the Ward of Charuma
Containing together four point three six three zero hectares
Surveyed by me, with due authority, in November 2002

In accordance with Regulation 25 (1) of the Land Surveyors' Regulations 1998, TTLS
I certify that this plan is correct.



Checked by *[Signature]* 15/01/04

Entered on Trinidad & Tobago Land Surveyor 17.06.2003