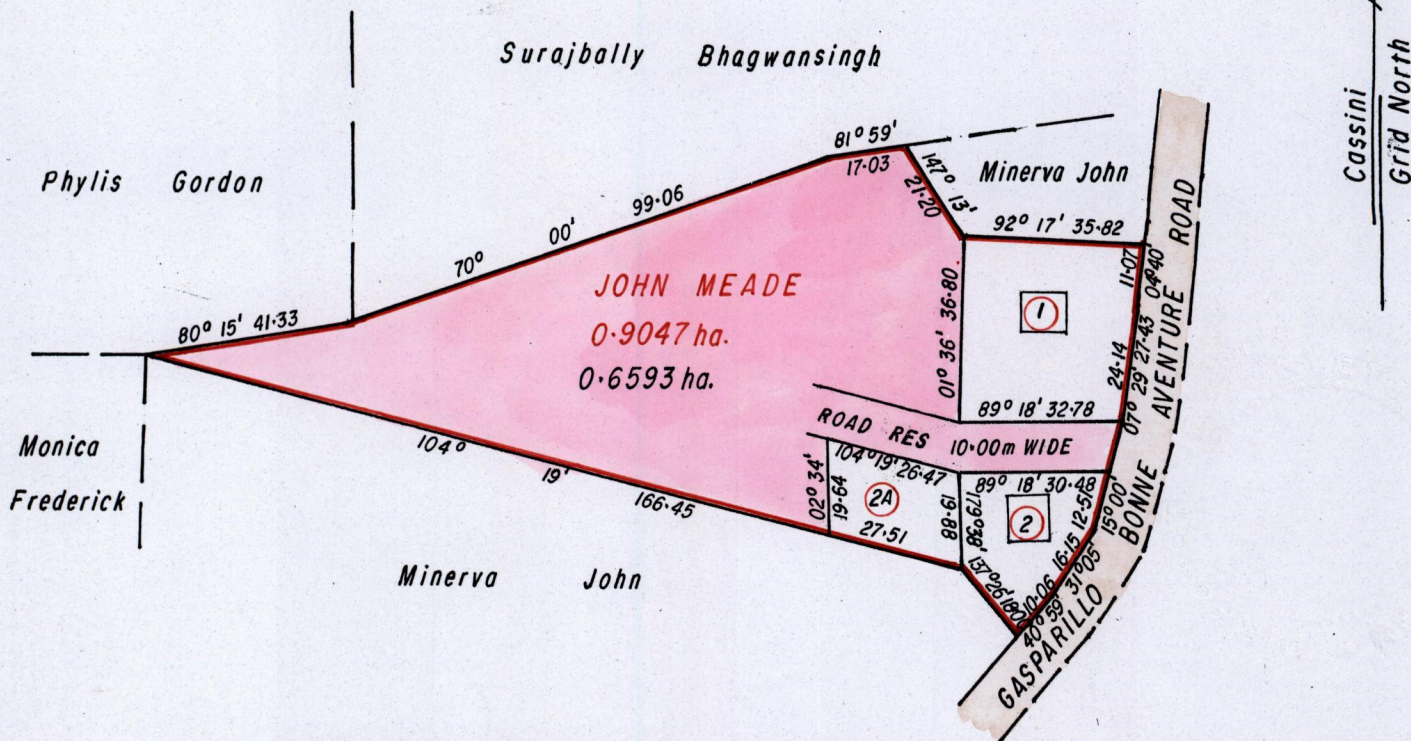


REMAINING PORTION

R.P.O.Vol. Fol.  
C.T.Vol. 3898 Fol. 509

Ward of Point a Pierre  
County of Victoria  
Cadastral Sheet D.22.L, 2/d  
Bk. 1229.146



- ① Jemma Sue Meade & Qrs. 1238m<sup>2</sup> C.T. 3948 fol. 257
- ② Nazir Khan & Ors. 697.0m<sup>2</sup> C.T. 3943 fol. 193
- ②<sup>A</sup> Nazir Khan 519.0m<sup>2</sup> C.T. 4488 fol. 467



Approved *[Signature]*  
 Director of Surveys  
 2004.7.20

SCALE 1/1500

Note: To obtain compass bearings subtract minutes. Distances are in metres

This is a true copy of a diagram of nine zero four seven point zero square metres

originally granted to JOHN MEADE, showing a portion coloured pink and containing zero point six five nine three hectares being the remainder after 3 previous transfer of another portion of the land.

In accordance with regulation 25 (1) of the Land Surveyors' Regulations 1998, I certify that this plan is correct.

Checked by *[Signature]* Joseph Barbaste

Entered..... Trinidad & Tobago Land Surveyor..... 4<sup>th</sup> May..... 2004