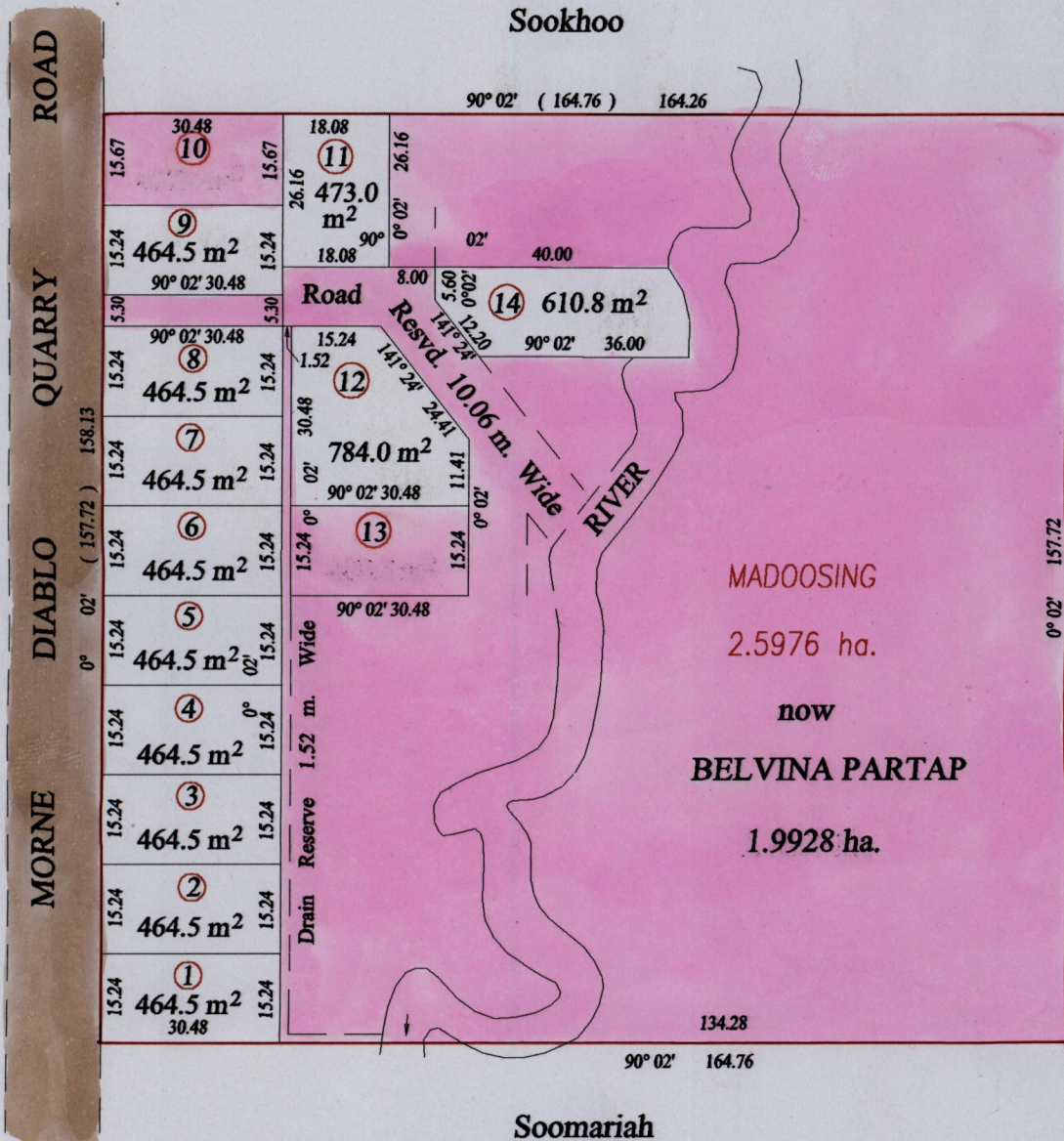


R.P.O. Vol. 124 Fol. 65
C.T. Vol. 289 Fol. 611

Ward of Siparia
County of St. Patrick
Cadastral Sheet (G.18.F) 73.C.
1/c



Joseph W. Gopaul

GN

CASSINI

Lot	Area	C.T.Vol.	Fol	Name
1	464.5 m ²	1575	51	John & Julia Brathwaite
2	464.5 m ²	1589	55	Mc Donald Pierre & Hurbert Pierre
3	464.5 m ²	1589	55	Mc Donald Pierre & Hurbert Pierre
4	464.5 m ²	1589	43	Selbert Taitte & Angela Maxwell
5	464.5 m ²	1528	495	Glenevia Stroud
6	464.5 m ²	1528	495	Glenevia Stroud
7	464.5 m ²	1614	105	Sonnial Dookhie
8	464.5 m ²	3286	397	Jacqueline Partap
9	464.5 m ²	3313	523	Lawrence & Rafeeza Partap
11	473.0 m ²	3210	17	Errol Hospedales & Anne-Marie Hospedales
12	784.0 m ²	3286	405	Carol & Martin Bastien
14	610.8 m ²	3286	413	Jane Morris

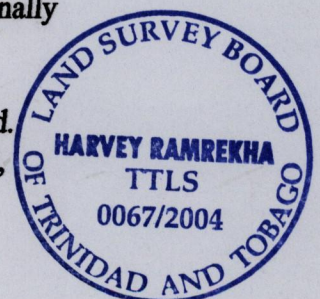
Approved *[Signature]*
Director of Surveys
2004.07.01

Vide Bk. 1163 fol. 191
Bk. 944 fol. 107

SCALE : 1:1250

Note: Bearings are cassini grid based on solar observations Distances are in metres
This is a true copy of a diagram of two point five nine seven six hectares, originally transferred to MADOOSING, shewing a portion coloured pink and containing one point nine nine two eight hectares being the remainder after twelve (12) previous transfers of another portion of the land. In accordance with Regulation 25 (1) of the Land Surveyors' Regulations 1998, I certify that this plan is correct.

Checked by *[Signature]* 2004.07.01



Entered on Trinidad & Tobago Land Surveyor 1.06 2004