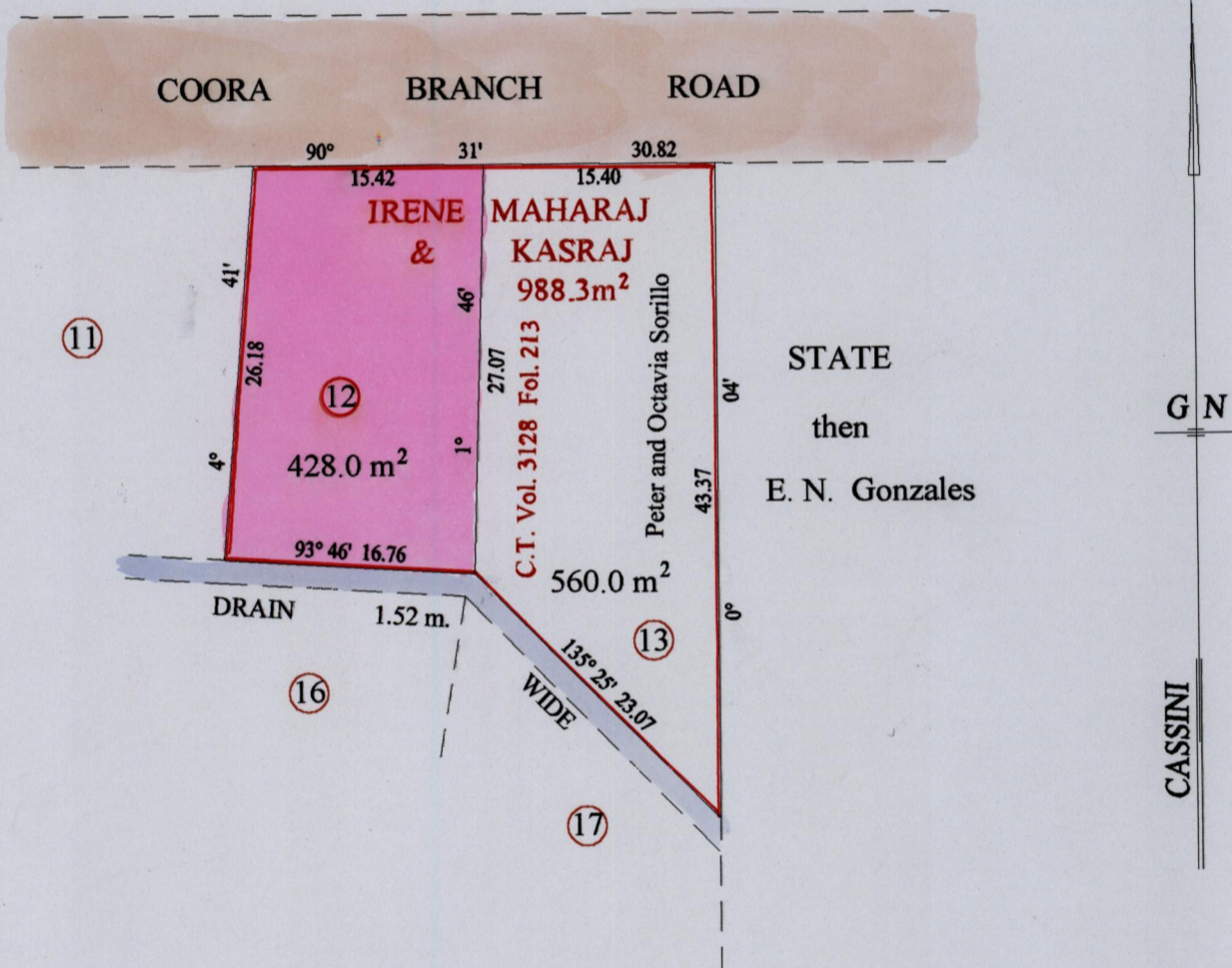


REMAINING PORTION

R.P.O. Vol. 12 Fol. 109
C.T. Vol. 2877 Fol. 29

Ward of Siparia
County of St. Patrick
Cadastral Sheet (G.17.G.) 73.B.
1/c



Vide Plan F.J.77

Approved *[Signature]*
Director of Surveys
2004-5-24

SCALE : 1:500

Note: Bearings are cassini grid based on solar observations Distances are in metres

This is a true copy of a diagram of nine hundred and eighty eight point three square metres, originally transferred to Irene Maharaj and Kasraj, shewing a portion coloured pink and containing four hundred and twenty eight point zero square metres being the remainder after one (1) previous transfer of another portion of the land. In accordance with Regulation 25 (1) of the Land Surveyors' Regulations 1998, I certify that this plan is correct.

Checked by *[Signature]* *[Signature]*
Entered on Trinidad & Tobago Land Surveyor 25.02.2004

