

R.P.O. Vol. 28 Fol. 221

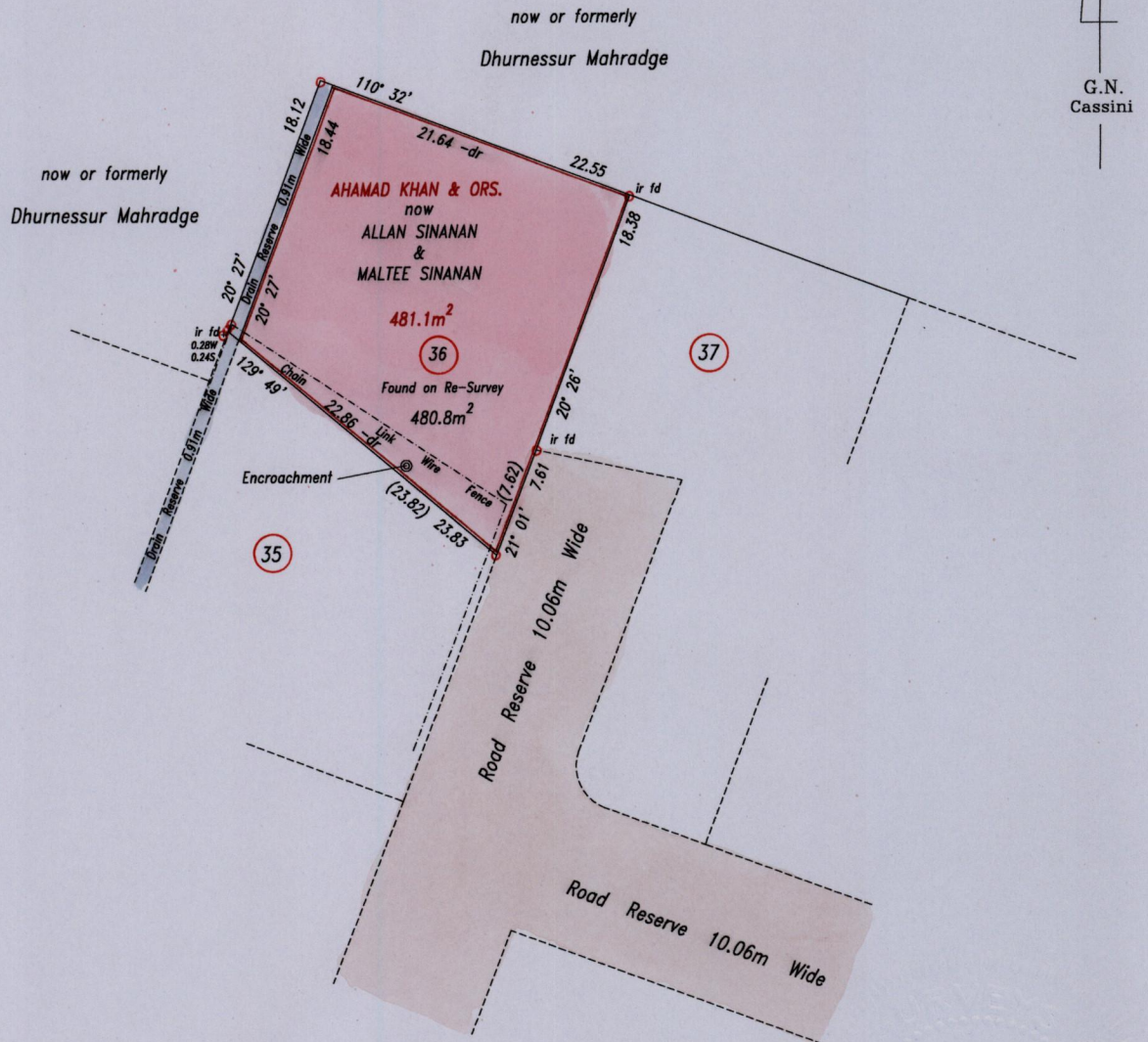
C.T. Vol. 3797 Fol. 205

U.P.R.N. No.:

Ward of Naparima

County of Victoria

Cadastral Sheet G.8.N. 63C  
3/c



Approved

*[Signature]*  
 Director of Surveys  
 8004524

Reference: Plan JA. 108

SCALE 1: 500

Distances are in metres

○ Denotes iron put except otherwise stated

Bearings are Cassini Grid based on Solar Observations

PLAN of a parcel of land coloured pink in the Ward of Naparima

Containing four hundred and eighty point eight square metres

Surveyed by me, with due authority, in September 2003

In accordance with Regulation 25(1) of the Land Surveyors' Regulations 1998, I certify that this plan is correct.

Checked by *[Signature]*

Entered .....

*[Signature]*  
 Trinidad & Tobago Land Surveyor 10/9/2003

