

1289

1899

R.P.O. Vol 224

Fol. 465

Ward of Charuma

C.T. Vol. 1570

Fol. 313

County of Nariva

SEE BK. 275 FOL. 181

BK. 944 FOL. 91

BK. 952 FOL. 28

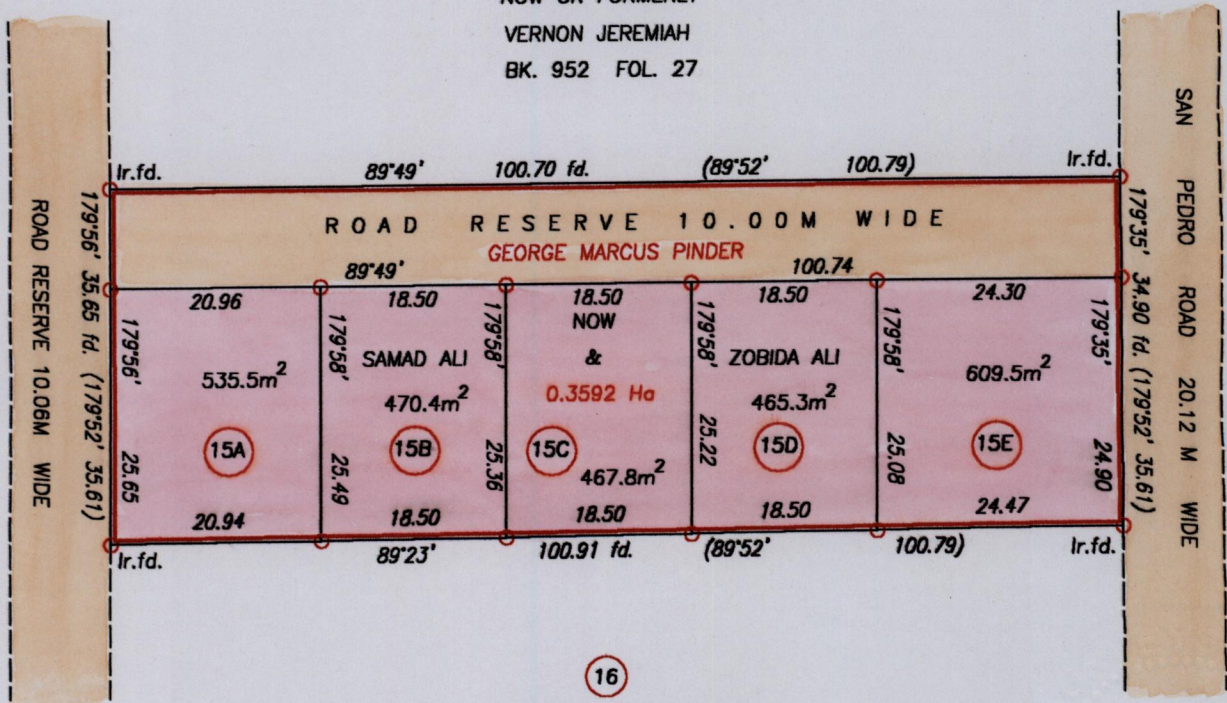
Cadastral Sheet D.25.K, 55A

1/d



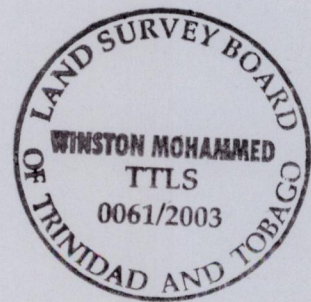
14

NOW OR FORMERLY
VERNON JEREMIAH
BK. 952 FOL. 27



16

NOW OR FORMERLY
MAY, LEON & GERTRUDE HOUSEND
BK. 952 FOL. 29



Approved: *[Signature]*
Director of Surveys 1004.5.21

o Denotes Iron put except otherwise stated. Scale 1:750
Bearings are Cassini grid based on solar observations Distances are in metres
Plan of several parcels of land coloured pink in the Ward of Charuma
Containing together two thousand five hundred and forty-eight point five square metres
Surveyed by me, with due authority in October 2001 for Zobida Ali
In accordance with Regulation 25 (1) of the Land Surveyors' Regulations 1998,
I certify that this plan is correct.

Checked by *[Signature]*
Entered..... Trinidad and Tobago Land Surveyor, 2/2 2003