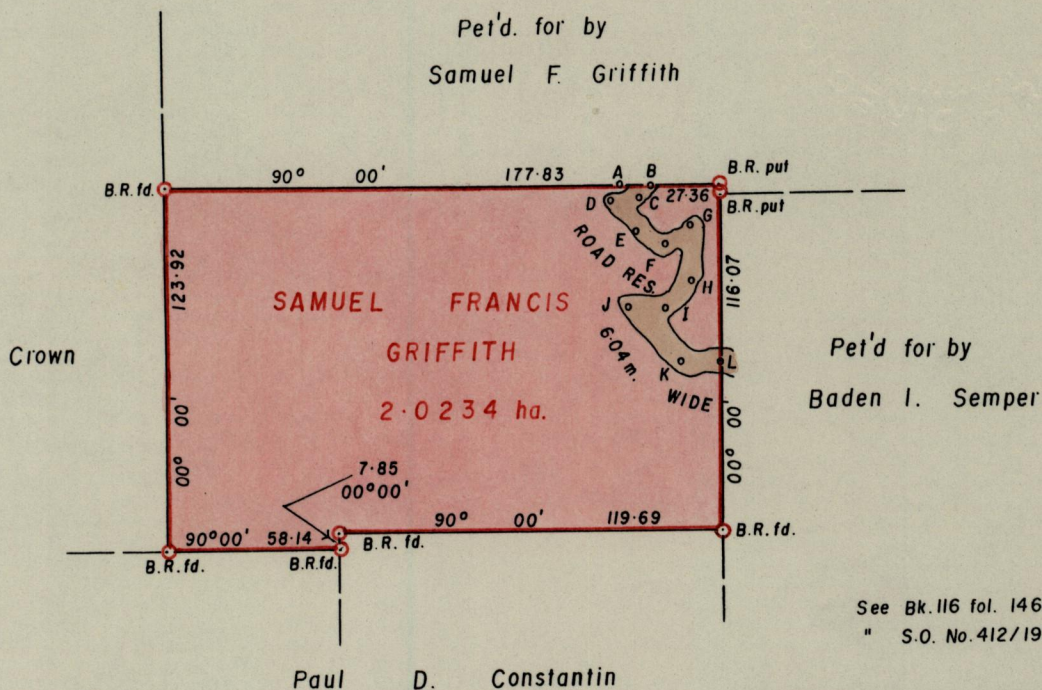
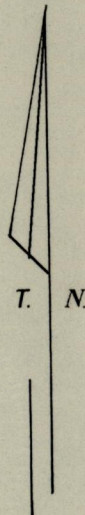


R.P.O. Vol. 513 Fol. 327

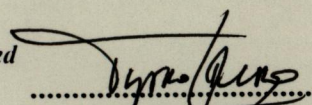
C.T. Vol. Fol.

Ward of Diego Martin
County of St. George
Cadastral Sheet A.14.0. ^{12F}/_{27B}



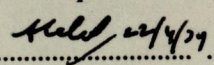
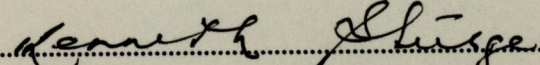
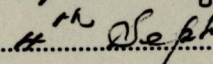
W. D. Field. Bk. 13 fol. 1-12

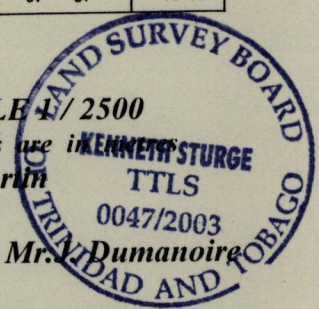
A - B	94° 28'	9.35
B - C	219° 05'	8.97
C - D	270° 22'	13.26
D - E	135° 06'	15.99
E - F	118° 08'	10.26
F - G	54° 15'	11.53
G - H	181° 36'	19.23
H - I	221° 19'	13.54
I - J	278° 20'	12.71
J - K	137° 37'	24.82
K - L	91° 01'	13.18

Approved 
 Director of Surveys
 15th Aug 12


Note: To Obtain compass bearings add/subtract minutes
 PLAN of a Parcel of land coloured pink in the Ward of Diego Martin
 Containing two point zero two three four hectares (5 0 0)
 Prepared by me, with due authority in August 1999 from surveys done by Mr. Dumanoire
 in November 1919 to March 1920.

In accordance with Regulation 25 (1), of the Land Surveyors' Regulations 1998,
 I certify that this plan is correct.

Checked by  
 Entered Trinidad and Tobago Land Surveyor.  2003



SCALE 1/2500

Distances are in  TTLS
0047/2003