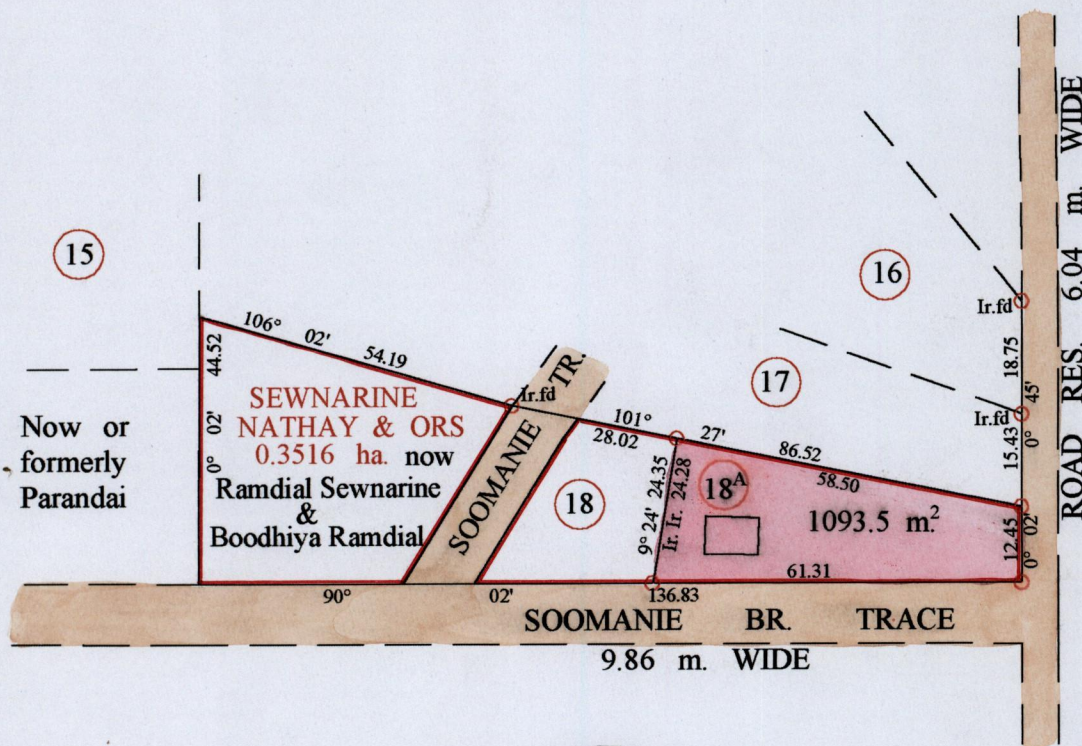


R.P.O. Vol. 422 fol. 159
C.T. Vol. 1846 fol. 227

Ward of Siparia
County of St. Patrick
Cadastral Sheet (G.14. F.) $\frac{64 D}{1/d}$

Bk. 1005 fol. 11



Approved *[Signature]*
 Director of Surveys
 2004.5.11

○ Denotes Iron Put Except
 Otherwise Stated

SCALE : 1: 1250

Note: Bearings are cassini grid based on solar observations Distances are in metres
 PLAN of a Parcel of land coloured pink in the Ward of Siparia
 Containing one thousand and ninety three point five sq.metres
 Surveyed by me, with due authority, in Sept. 2002
 In accordance with Regulation 25 (1) of the Land Surveyor's Regulations 1998,
 I certify that this plan is correct.

Checked by *[Signature]* *[Signature]*

Entered on Trinidad & Tobago Land Surveyor *22nd Sept.* 2002