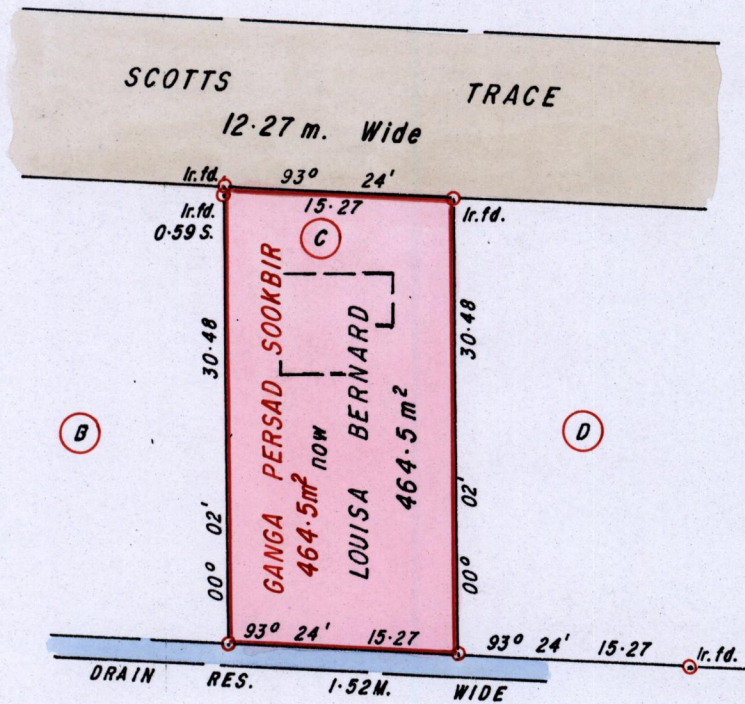


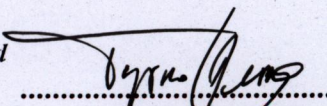
R.P.O. Vol. 216
C.T. Vol. 2950

Fol. 543
Fol. 249

Ward of Siparia
County of St. Patrick
Cadastral Sheet G.18.J., 73C
3/6

Ref. Bk. 412 / 250
Bk. 1148 / 21
Bk. 1256 / 44
Bk. 1117 / 138



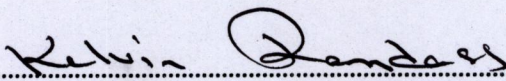
Approved 
Director of Surveys
2004/4/21

○ Denotes Iron put unless otherwise stated
Bearings are Cassini Grid based on Solar Obs.
SCALE 1 / 500
Distances are in METRES

Note: To Obtain compass bearings add/subtract minutes

PLAN of a Parcel of land coloured PINK in the Ward of Siparia
Containing four hundred and sixty four point five square metres
Surveyed by me, with due authority, in November 2003
In accordance with Regulation 25 (1) of the Land Surveyors' Regulations 1998,
I certify that this plan is correct.

Checked by M.M. 5/04/04


Trinidad and Tobago Land Surveyor 22/04/2003

Entered

Trinidad and Tobago Land Surveyor..... 2003