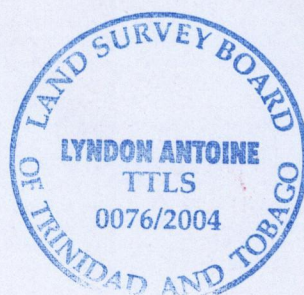
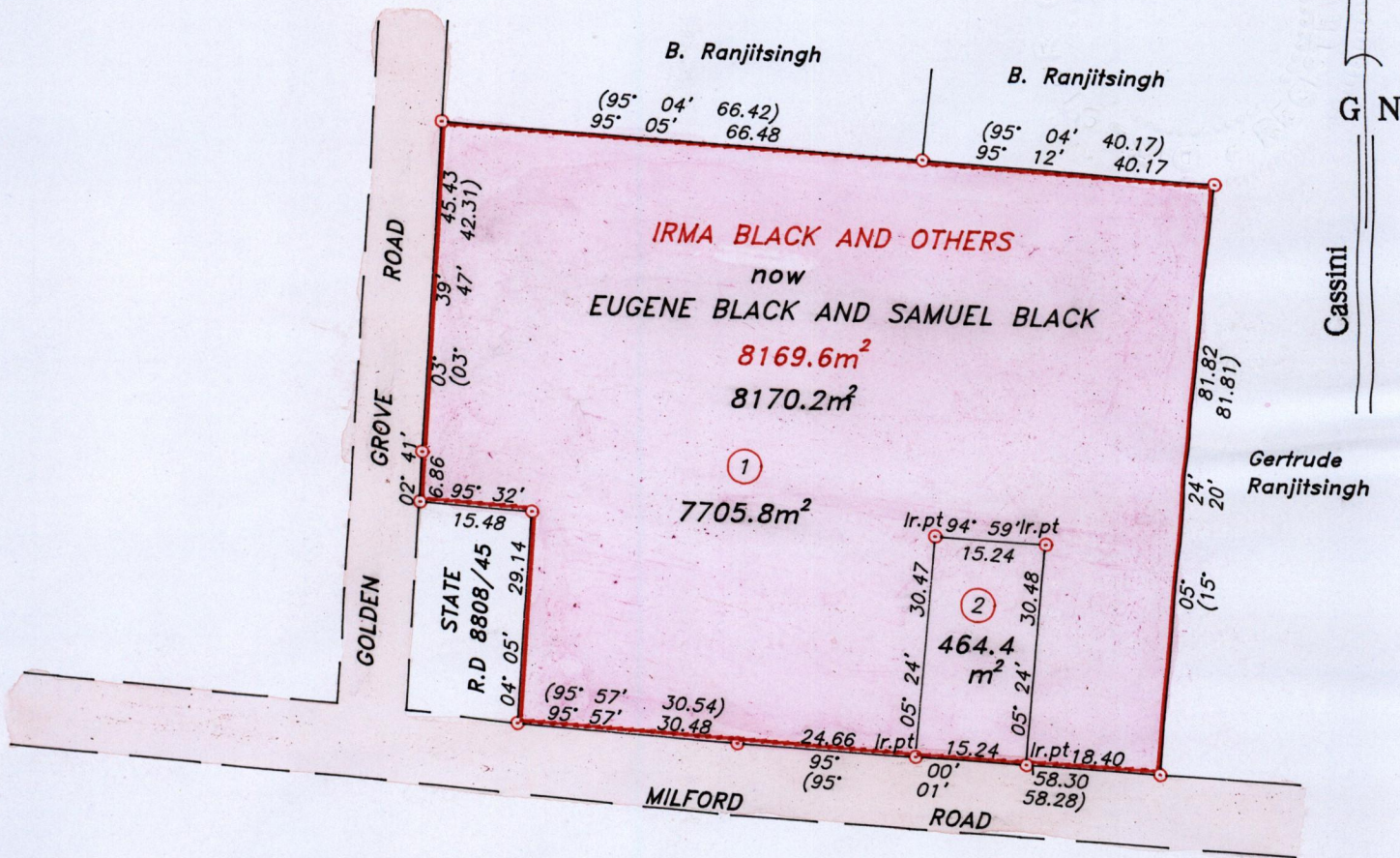


U.P.R.N.....  
R.P.O Vol. Fol.  
C.T Vol.3341 Fol. 319

Cadastral Sheet I.21.C  
Ward of Tobago  
Parish of St. Patrick



Approved  
*Lyndon Antoine*  
 Director of Surveys  
 2004-3-31

SCALE 1:1000

○ Denotes iron found, except otherwise stated.  
 Bearings arc grid based on solar observations

Distances are in metres

PLAN of 2 parcels of land coloured pink in the Ward of Tobago  
 Containing together eight thousand one hundred and seventy point two square metres.  
 Surveyed by me, with due authority on 3rd December 2002.  
 In accordance with Regulation 25 (1) of the Land Surveyors' Regulations 1998, I certify that this plan is correct.

Checked by M.M. 15/3/04  
 Entered.....

*Lyndon Antoine*  
 26<sup>th</sup> February

Trinidad & Tobago Land Surveyor..... 2004  
 path: \\Main\002SURVEY\B118\Dblack.DWG