

R.P.O. Vol. 57

Fol. 309

Cadastral Sheet F.10.D. 62B

Ward of La Brea

2/b

C.T. Vol. 2900

Fol. 89

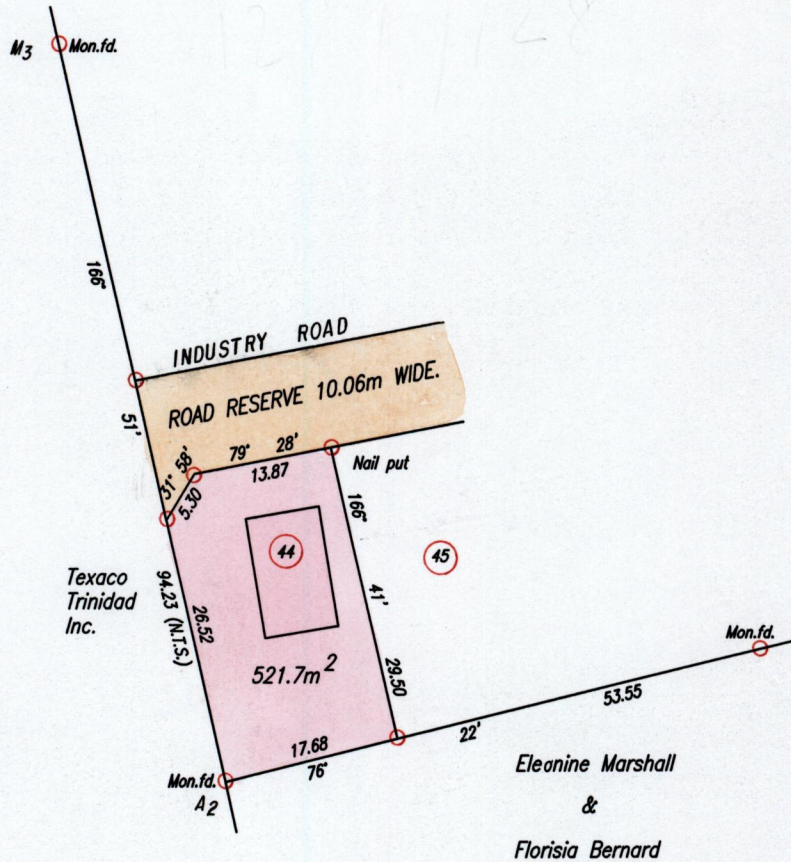
County of St.Patrick.

C-1 Vol. 5540

Fol. 407

General Plan file in Vol. 1743 fol. 143

Vide Plan CK110



Approved

[Signature]
 Director of Surveys
 2024.3.31

○ Denotes Iron put except otherwise stated.

Bearings are based on Solar Observations

PLAN of a Parcel of land coloured pink in the Ward of La Brea
Containing five hundred and twenty one point seven square metres.

Redefined by me, with due authority, in September, 2002

In accordance with Regulation 25(1) of the Land Surveyors' Regulations 1998,
I certify that this plan is correct.

Checked by *[Signature]* 15 November

[Signature]

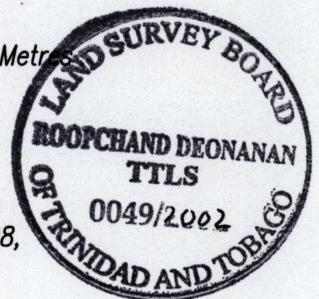
Entered on

Trinidad & Tobago Land Surveyor 15 November 2002

PATH = EV700 C:\Drawings\JDavid.dwg.

SCALE 1:750

Distances are in Metres



Lot #	CT. VOLUME *	NAME
44	Vol 5540 Fol 407	JOYCE DAVID

29 NOV 2002
Lands and
Surveys
Division

1289/128