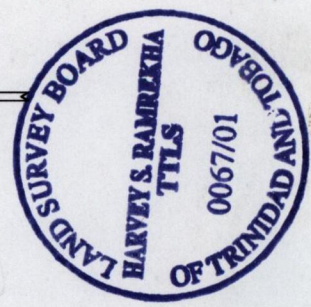


1287

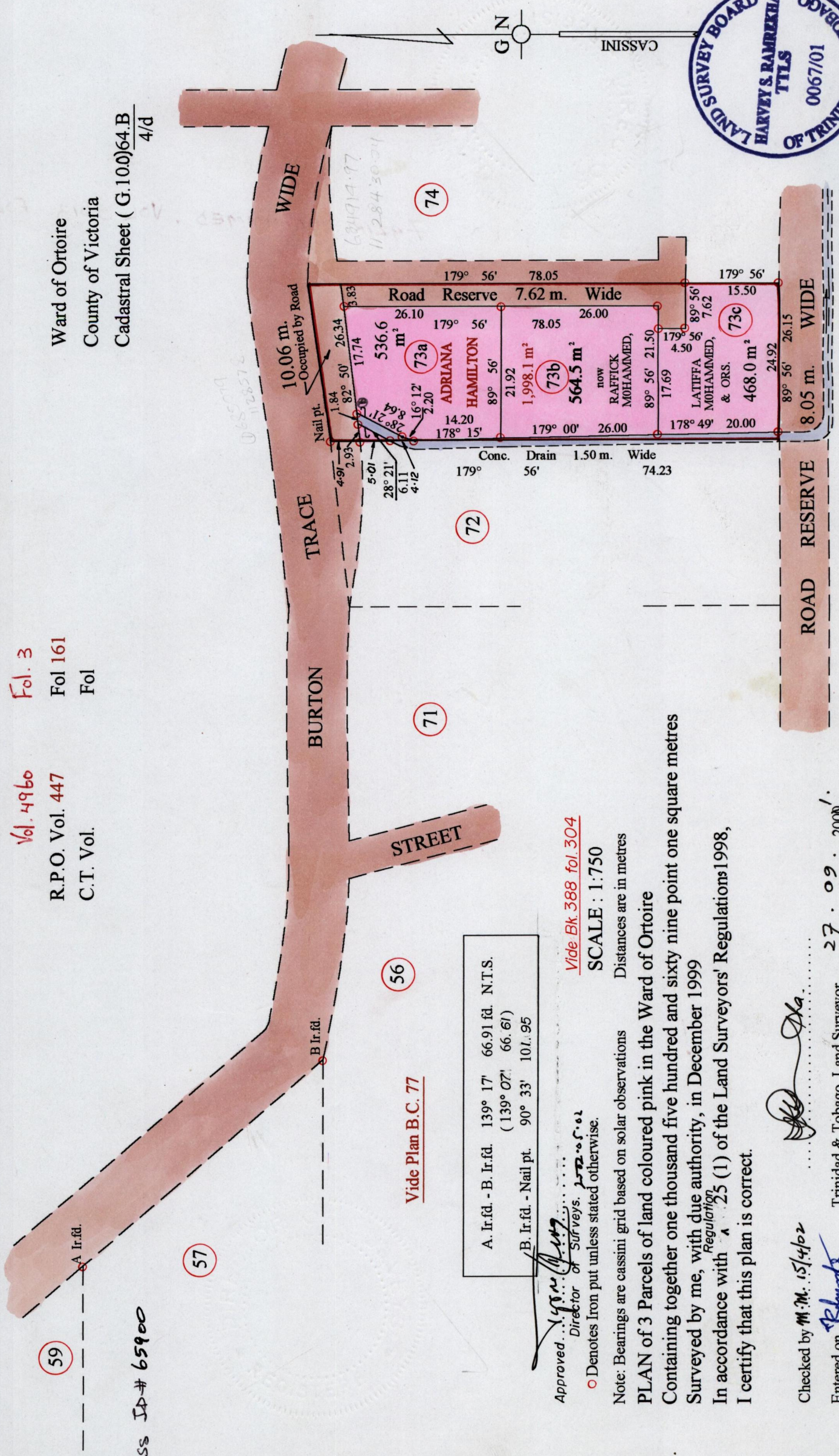
94



Ward of Ortoire  
County of Victoria  
Cadastral Sheet (G.100)64.B  
4/d

Vol. 4960 Fol. 3  
R.P.O. Vol. 447 Fol 161  
C.T. Vol. Fol

Process ID # 65900



A. Ir.f.d. - B. Ir.f.d. 139° 17' 66.91 fd. N.T.S.  
(139° 07' 66.61)  
B. Ir.f.d. - Nail pt. 90° 33' 101.95

Vide Plan B.C. 77

Vide Bk. 388 fol. 304

Approved: *[Signature]*  
Director of Surveys, 2002-05-01

○ Denotes Iron put unless stated otherwise.

Note: Bearings are cassini grid based on solar observations Distances are in metres

SCALE : 1:750  
PLAN of 3 Parcels of land coloured pink in the Ward of Ortoire  
Containing together one thousand five hundred and sixty nine point one square metres  
Surveyed by me, with due authority, in December 1999  
In accordance with Regulation 25 (1) of the Land Surveyors' Regulations 1998,  
I certify that this plan is correct.

Checked by M.M. 15/4/02  
Entered on *[Signature]* Trinidad & Tobago Land Surveyor 27.09.2000



73a - Vol. 4960 Fol. 7

73b - Vol. 5013 Fol. 143 FAZIR MOHAMMED - VOL 5013 FOL 143

73c - Vol. 4960 Fol. 15.

28 SEP 2001  
Lands and  
Surveys  
Div. '01