

Process JD# 65861

R.P.O Vol. 85 Fol. 509
C.T Vol. 701 Fol. 259

1287

886

Ward of Siparia
County of St. Patrick
Cadastral Sheet G 12 P $\frac{63E}{4c}$ & $\frac{73B}{27a}$

JOL A955 FOL 179

Reserve for
Burnt Clay
then
Shadrack
Medford

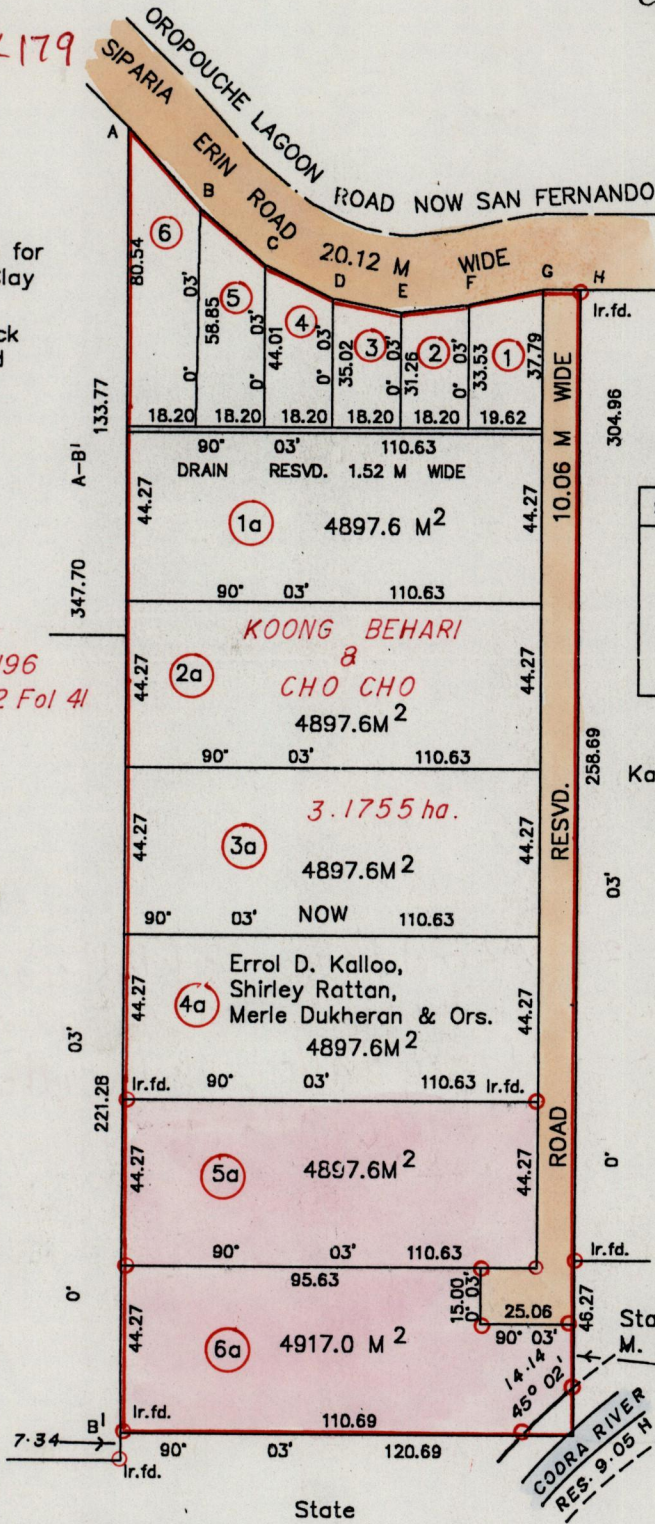
Bk. 1196
Vol. 2 Fol 41

Christobal
Castel

Kaloo Pitram
&
Sahadu

1256:114

State then
M. Anthony



STA.FROM	STA.TO	BG.	DIST.
A	B	138° 42'	28.90
B	C	130° 38'	22.80
C	D	116° 21'	20.30
D	E	101° 44'	18.58
E	F	82° 57'	18.34
F	G	77° 50'	20.09
G	H	90° 03'	10.06

LOT NO.	AREA
1	700.0 M ²
2	589.6 M ²
3	603.1 M ²
5	916.5 M ²

Bearings are Cassini Grid based on solar obs.
Approved

[Signature]
Director of Surveys
2512 08 19

○ Denotes iron put except otherwise stated
SCALE 1:2000

Note: To obtain compass bearings add/subtract minutes Distances are in metres

PLAN of 2 Parcels of land coloured pink in the Ward of Siparia

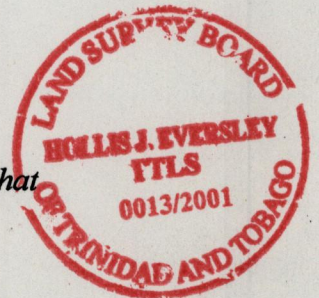
Containing Nine thousand eight hundred and fourteen point six square metres

Surveyed by me, with due authority, in May 2001

In accordance with Reg.(25) (1) of the Land Surveyors' Regulations 1998 I certify that this plan is correct.

Checked by *[Signature]* 21.02.02:06

Entered *[Signature]* Trinidad and Tobago Land Surveyor 24th July 2001



5a. VOL. A955. FOL. 223 Errol Kalloo, Merte Dukharan, Joyce Lakhran
Shirley Rattan & Sydney Kalloo.
6a. VOL. A955 FOL. 231 Errol Kalloo, Merte Dukharan, Joyce Lakhran
Shirley Rattan & Sydney Kalloo.



30 JUL 2001
Lands and
Surveys
Division