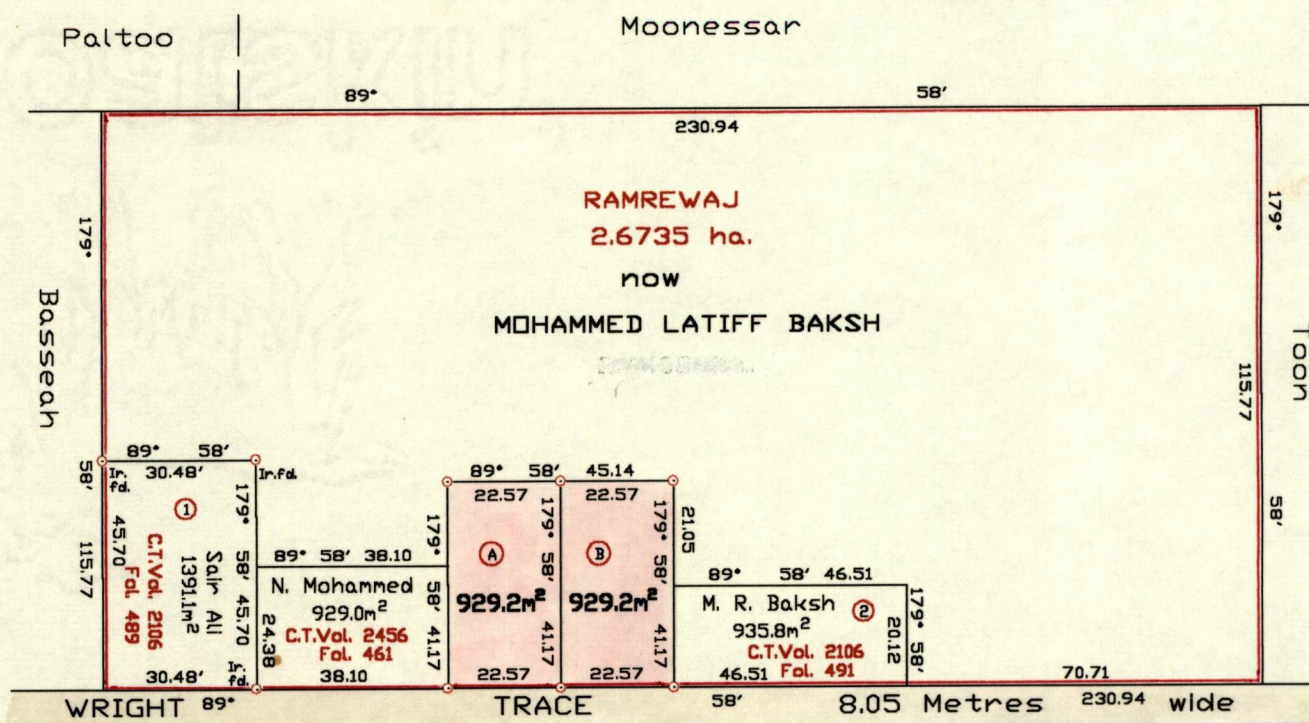
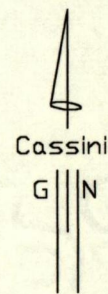


Vol 4781 Fol 281  
R.P.D. Vol. 459 Fol. 623  
C.T. Vol. Fol.

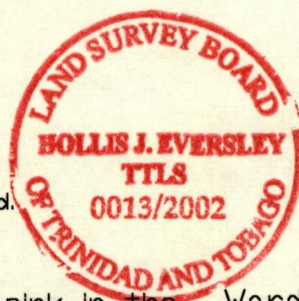
Cadastral Sheet G.14.D.&G.15.A 64E  
Ward of Savana Grande 1/a  
County of Victoria

Process SD# 65859



*need a distance from  
Cummute Road*

Approved by *[Signature]*  
Director of Surveys  
16B '07.20



*see bk 110:9  
.. BK 1002: 215*

SCALE 1:1500  
Distances are in metres

o Denotes Ir.pt. except otherwise stated.  
Bearings are based on solar observations

PLAN of 2 parcels of land coloured pink in the Ward of Savana Grande  
Containing together One thousand eight hundred and fifty-eight point four sq. metres.  
Surveyed by me with due authority, in January 2001.

In accordance with Reg 25(1) of the Land Surveyors' Regulations 1998, I certify that this plan is correct.

Checked by *M.M. 20/11/02*

Entered on .....

Trinidad & Tobago Land Surveyor *[Signature]* 13<sup>th</sup> Sept 2002

A - Vol 4781 Fol 235 Annie & Brian Laloo.

B - Vol 4781 Fol 243 Azard Baksh & Nicole Mohammed.

Remaining Portion Bk 1331:163 Vol 4712 fol. 489

20 SEP 2002  
Lands and  
Surveys  
Division